



Traffic Advisory – For Immediate Release Monday, July 31, 2017

Bridge located on Range Road 113 temporarily closed for repairs starting Thursday

Effective August 3, 2017 the bridge located on Range Road 113 north of Highway 671 will be closed for replacement until early September 2017.

Traffic is advised to detour from Highway 671 on Range Road 111 and Township Road 730 to access Range Road 113 north of the bridge.

All start and completion dates for bridge repairs are weather dependent.

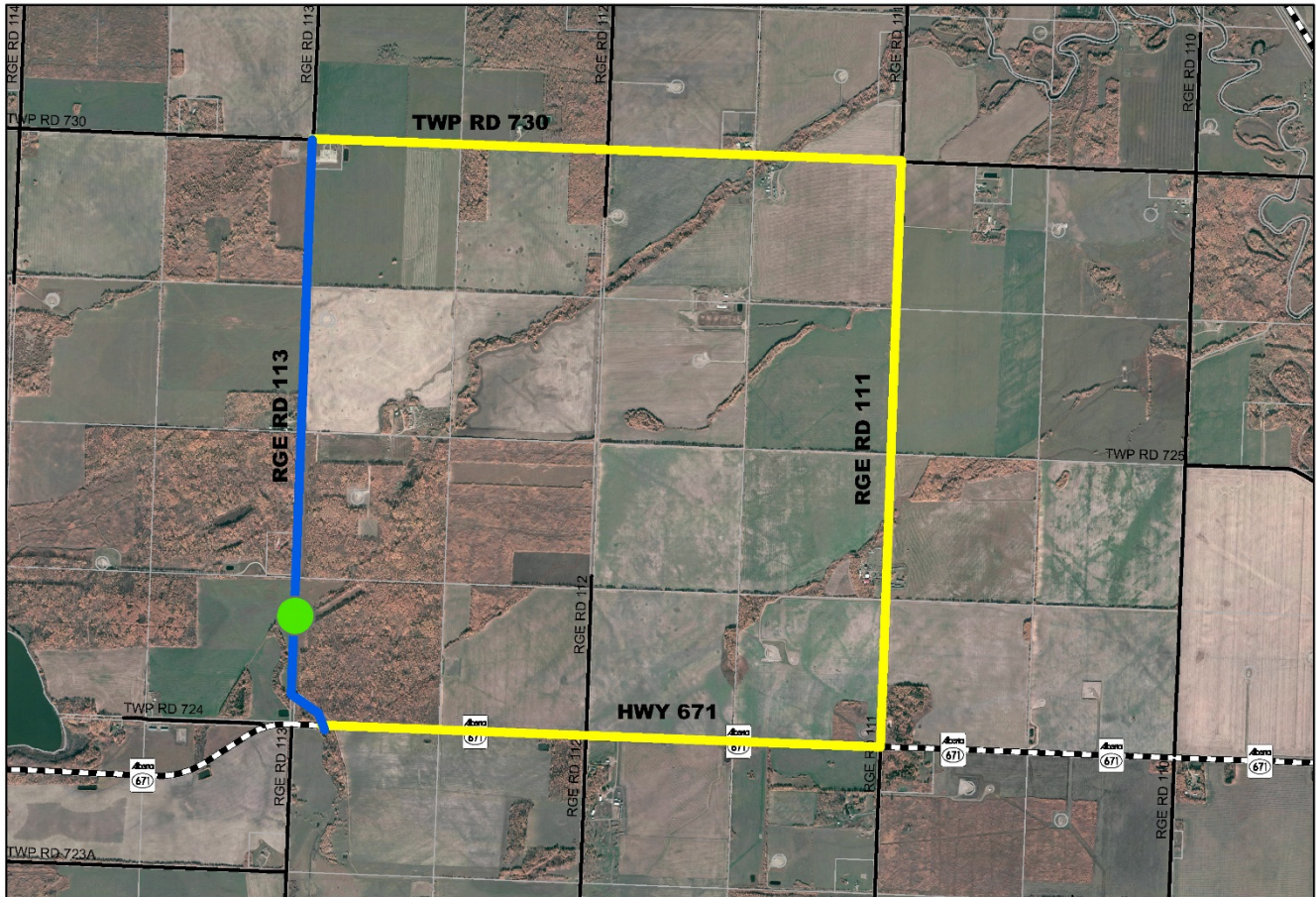
The County thanks residents and travellers for their patience and cooperation while bridge repairs are underway.

For more information, contact the Public Works department at 780-532-7393.

-30-

Media contact:

Clint Diederich
Operations Manager Public Works
780-532-9722



- Alternate Route
- Local Traffic Only
- Bridge Closed

**RGE RD 113
BRIDGE CLOSURE**

	County Public Works Department
BRIDGE CLOSURE	
<p>DATE: 01/11/2024</p> <p>TIME: 08:00 AM - 05:00 PM</p> <p>LOCATION: RGE RD 113</p> <p>REASON: BRIDGE CLOSURE</p> <p>CONTACT: 780-532-9722</p> <p>WEBSITE: www.countygp.ab.ca</p>	