



Traffic Advisory – For Immediate Release Friday, October 6, 2017

Section of Range Road 63 temporarily closing Tuesday for bridge replacement

Effective Tuesday, October 10, 2017 the bridge located on Range Road 63 south of Highway 59 will be closed for replacement until mid-November.

Traffic is advised to detour from Highway 59 on Range Road 62 and Township Road 734 to access Range Road 63 south of the bridge.

All start and completion dates for bridge repairs are weather dependent.

Please see attached map, which indicates the location of the bridge closure and detour routes.

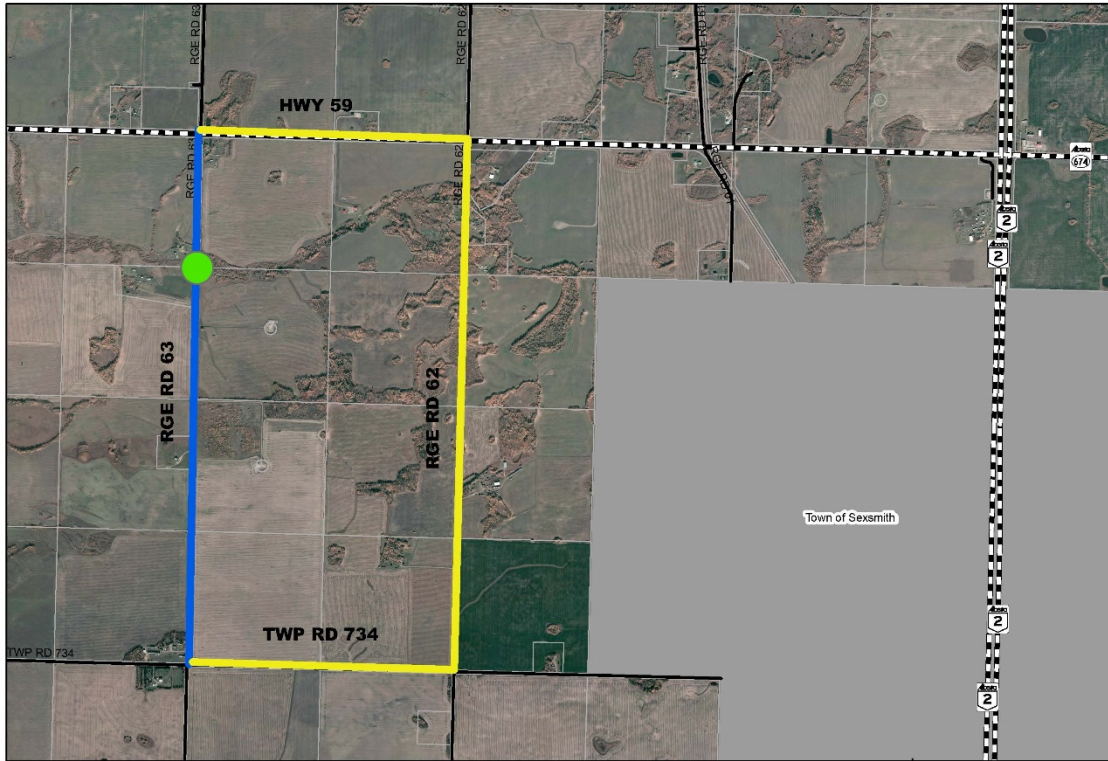
The County thanks residents and travellers for their patience and cooperation while this bridge replacement is underway.

For more information, contact the Public Works department at 780-532-7393.

-30-

Media contact:

Dale Van Volkingburgh
Public Works Director
780-532-9722



- Alternate Route
- Local Traffic Only
- Bridge Closed

RGE RD 63 - BRIDGE CLOSURE