



## **Traffic Advisory – For Immediate Release Monday, June 30, 2018**

---

### **Construction along Range Road 62 continues for Clairmont Lagoon Discharge Project**

Starting on Tuesday, July 31, a section of Range Road 62, north and south of 150 Avenue, will be closed as work to install a sanitary forcemain continues.

Motorists are advised to detour using 162 Avenue or 158 Avenue. The anticipated completion date of this phase of the installation is mid-August, weather dependent. A forcemain is an underground pipeline that moves wastewater. This work is being done as part of the Clairmont Lagoon Discharge Project.

Please note that all start and completion dates are weather dependent.

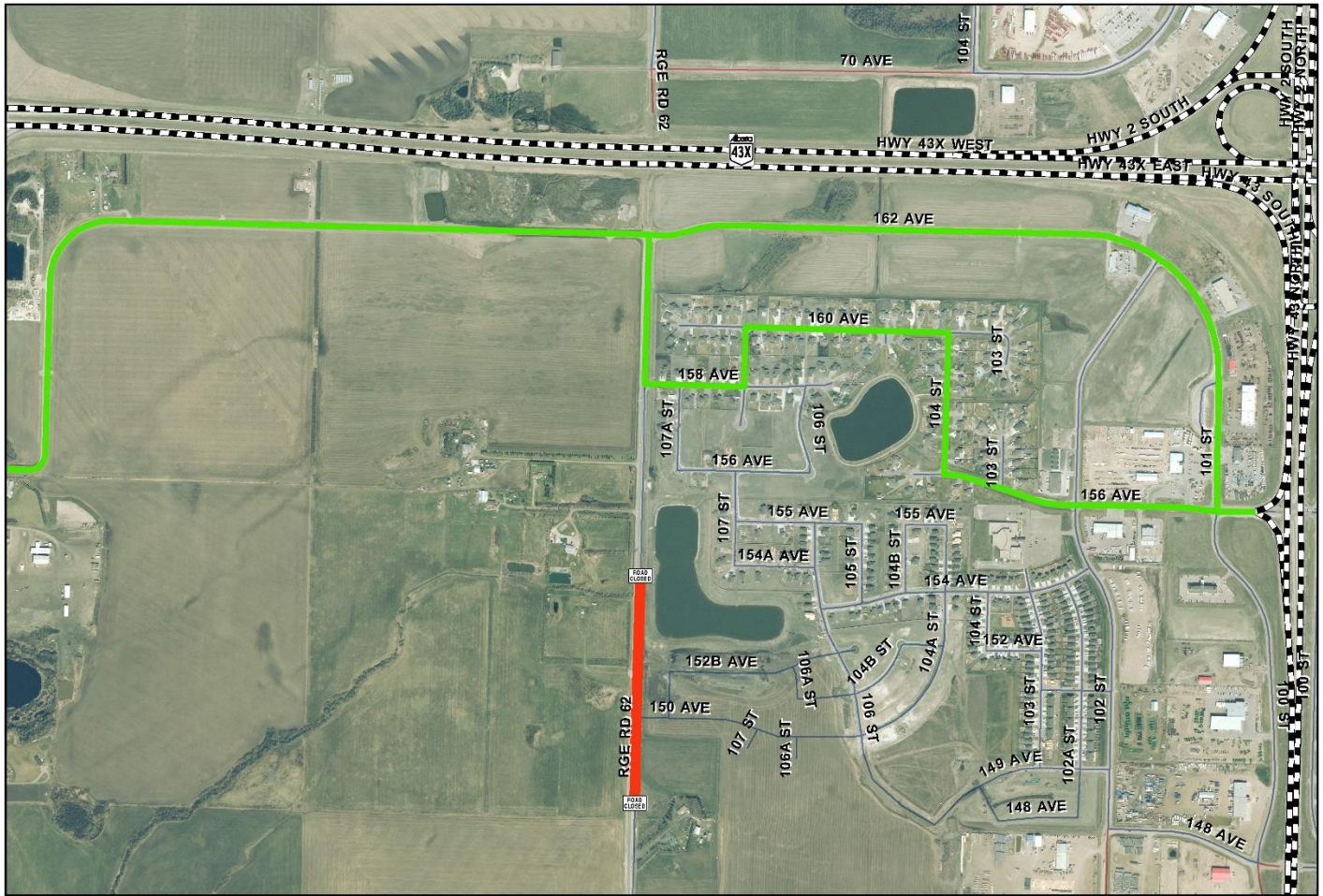
Please see attached for project map. The red line indicates the road closure and the green line indicates the detour routes.

The Clairmont Lagoon Discharge Project will connect Clairmont's wastewater collection system to Aquatera's larger collection system for Grande Prairie. This project will accommodate long term growth in Clairmont for wastewater treatment. The County has invested \$2.5 million in funding to the project alongside \$12 million in combined funding from Federal and Provincial government grant programs.

-30-

#### **Media contact:**


Dale Van Volkingburgh  
Public Works Director  
780-532-9722



**LEGEND**  
— Closure  
— Detour

### Road Closure

Range Road 62  
Phase 2

	County Public Works Department
<b>Road Closure</b>	
<small>Author: [Name], Date: [Date]</small>	
<small>© 2015 County of Grande Prairie No. 1. All rights reserved. This document is the property of the County of Grande Prairie No. 1 and is not to be distributed outside the County of Grande Prairie No. 1 without the written consent of the County of Grande Prairie No. 1.</small>	