



## COUNTY OF GRANDE PRAIRIE No. 1

---

PROUD SPONSOR



### News Release – For Immediate Release Monday, August 31, 2009

---

#### New Municipal Services Building

On Monday, September 14, 2009, five departments within The County of Grande Prairie will open the doors at their new location (1 mile west of the Hamlet of Clairmont on Township Road 724).

The new Municipal Services Building provides the space needed for efficient, safe operations in a 23,450 square-foot office building and 4,042 square-foot Agriculture building. Estimated final cost is \$12 million. The County has received approximately \$4.5 million in provincial grants (Municipal Sustainability Initiative) and plans to apply future funding to cover the balance.

“As the County grew over the past years, the inadequate size of the Administration building made it more and more difficult to efficiently provide County services,” stated Reeve Everett McDonald. In 2007, the County building selection committee chose County owned land in the area of Township Road 724 and Range Road 62(SE of 27-726W6) as the optimal site allowing crucial access to planned transportation routes and the Clairmont area. Bennett Architect Ltd. was then hired and the design process began. In March 2008, Jen-Col Construction Ltd. was brought on board and construction began.

Agriculture Services, Enforcement Services, Family & Community Support Services, Fire Services and Parks & Recreation will be relocated to the new facility. All departments will move into their permanent location Thursday, September 10<sup>th</sup> and Friday, September 11<sup>th</sup>.

#### Customer Service on Moving Dates

Service interruptions due to relocating staff to the new building will take place as follows:

- On moving days (Sept. 10 & 11), the department’s offices will be closed in order to allow movers to begin relocation. Fire, Enforcement and Parks offices will close Wednesday afternoon.
- Your patience is appreciated as the departments will experience limited capabilities for those two days.
- Phone service will be disrupted Sept. 10<sup>th</sup> & 11<sup>th</sup>. Please call the Administration Building’s Main Reception line (780-532-9722) for those TWO DAYS ONLY.
- To ensure complete service, the public will be encouraged to call or visit the departments that are relocating **before** or **after** their move-in and move-out days.



**As of Monday, Sept. 14<sup>th</sup>**, this is the **new phone list**:

Agriculture Services.....780-567-5585  
Agriculture Services Fax.....780-567-5589  
Enforcement Services.....780-567-5580  
Family & Community Support Services.....780-567-5598  
FCSS Fax.....780-567-5575  
Fire Services.....780-567-5590  
Fire Services Fax.....780-567-5578  
Home Support.....780-567-5599  
Parks & Recreation.....780-567-5595  
Protective Services & Parks Fax.....780-567-5576

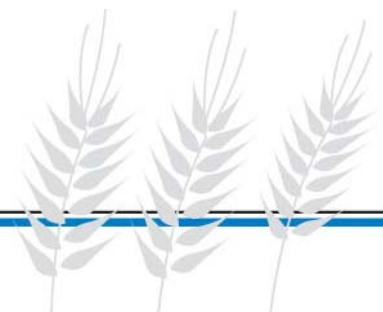
Council is discussing naming the new building at their next meeting scheduled for Tuesday, September 8th. An official opening ceremony is expected to take place later this fall.

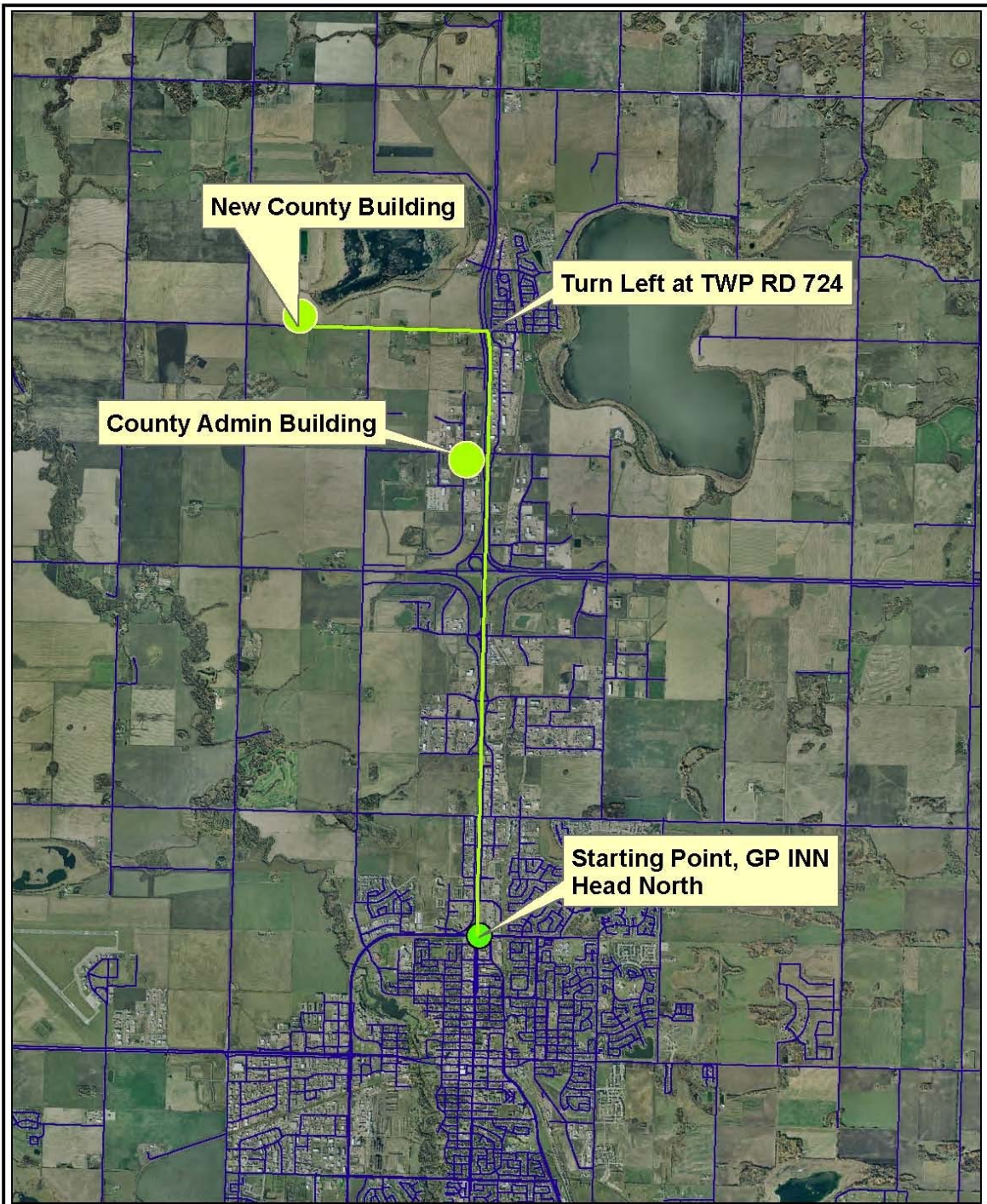
-30-

For further information, please contact:

Bill Rogan  
Administrator  
County of Grande Prairie No. 1  
(780) 532-9722  
[brogan1@countygp.ab.ca](mailto:brogan1@countygp.ab.ca)

Everett McDonald  
Reeve  
County of Grande Prairie No. 1  
(780) 831-8590  
[emcdonald@countygp.ab.ca](mailto:emcdonald@countygp.ab.ca)





**New County Building**

**Turn Left at TWP RD 724**

**County Admin Building**

**Starting Point, GP INN  
Head North**



**New County Building Directions Map**

This GIS product is comprised of many layers of information that are maintained by other external data providers. The County of Grande Prairie No. 1 assumes no responsibility nor liability for the accuracy or completeness of these data layers.

The County of Grande Prairie makes no representation or warranties regarding the information contained in this document, including without limitation, whether said information is accurate or complete. Persons using this document do so solely at their own risk, and The County of Grande Prairie shall have no liability to such person for any loss or damage whatsoever. This document shall not be copied or distributed to any person without the express written consent to the County of Grande Prairie.  
Copyright 2017, County of Grande Prairie. All Rights Reserved.

