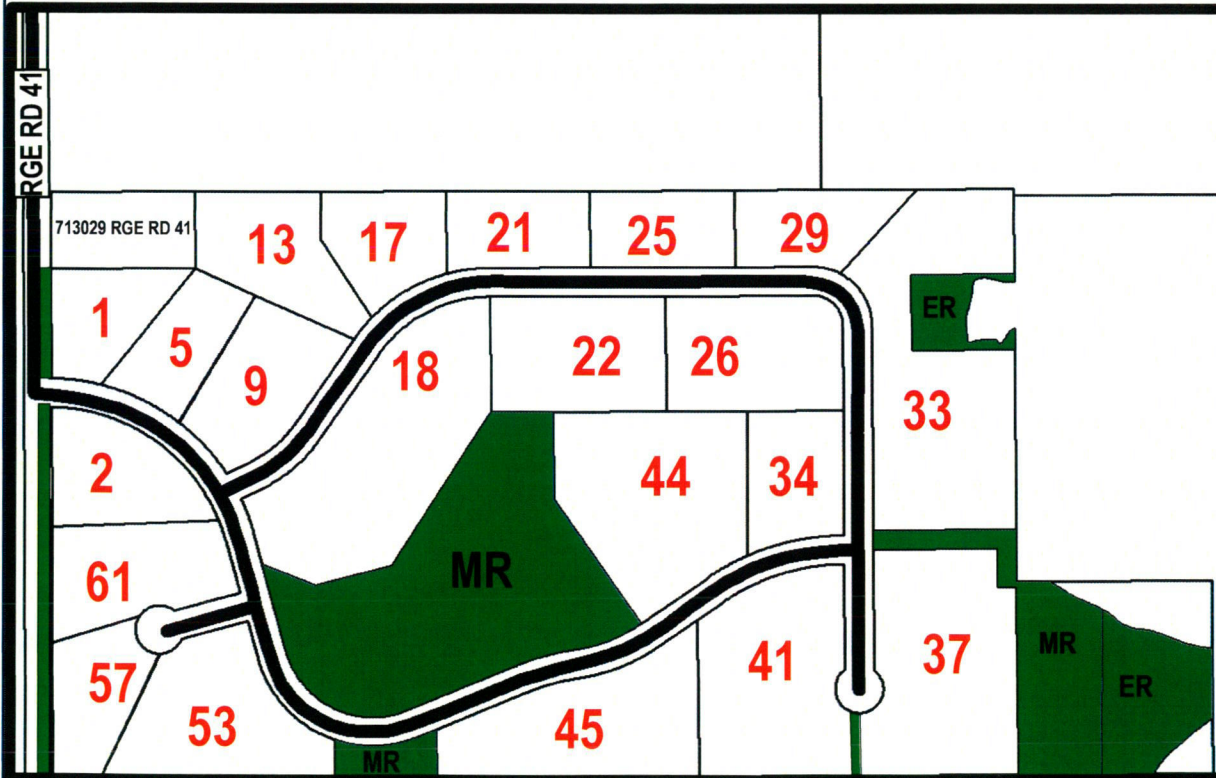


# 713021 RGE RD 41

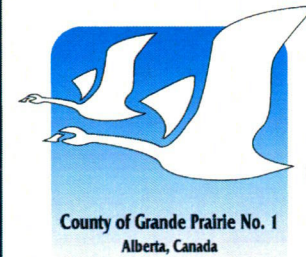


## CRYSTAL CREEK ACRES

**SE/SW 24-71-4 W6M**



**ER - Environmental Reserves**  
**MR - Municipal Reserves**



**County of Grande Prairie No. 1**

County of Grande Prairie No. 1  
Alberta, Canada

For more information phone  
780-532-9722