



Traffic Advisory – For Immediate Release Wednesday, August 15, 2018

Section of Range Road 100 south of Highway 43 temporarily closing for culvert replacement Friday

Effective on Friday, August 17, Range Road 100 from Highway 43 to Highway 667, southeast of the Town of Beaverlodge, will be closed for a culvert replacement. A culvert is an underground steel tunnel that carries stream water.

The work is expected to be complete within the day, weather dependent. Traffic is advised to detour using Highway 667, Highway 43 and Highway 722.

All start and completion dates for culvert replacements are weather dependent.

Please see the attached map to view the location of the culvert replacement and detour routes.

The County thanks residents and travellers for their patience and cooperation.

For more information, contact the Public Works department at 780-532-7393.

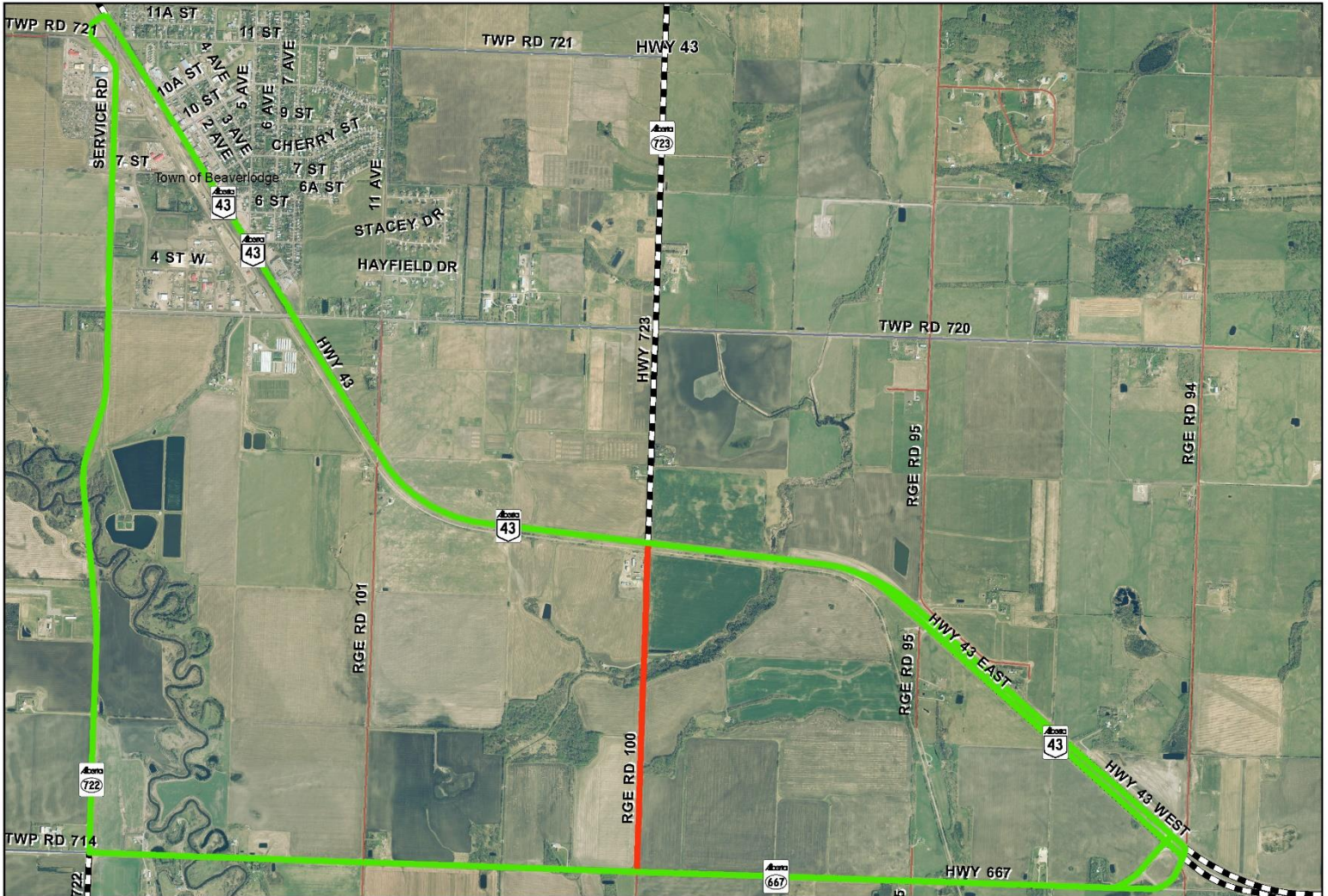
-30-

Media contact:

Clint Diederich
Public Works Operations Manager
780-532-9722



County of
Grande Prairie No. 1



LEGEND
— Closure
— Alternate Route

Road Closure

Range Road 100 from
Hwy 43 to HWY 667

	County Public Works Department
Road Closure	
<small> Date: 15 August 2018 Time: 15 August 2018 County of Grande Prairie No. 1 10001 - 84 Avenue - Clairmont, AB - T8X 5B2 - Canada Administration Building: 780-532-9722 - Community Services Building: 780-532-9727 - Fax: 780-539-9880 www.countygp.ab.ca </small>	