



Traffic Advisory – For Immediate Release Wednesday, July 11, 2018

Section of Township Road 730 temporarily closing for repairs this Thursday

Effective Thursday, July 12, Township Road 730 from Range Road 63 to Range Road 64 will be closed for repairs. The road will reopen Friday, weather dependent.

Traffic is advised to detour using Range Road 63 and Range Road 64 north to Highway 672 or south to Township Road 724.

All start and completion dates for road construction and rehabilitation projects are weather dependent.

Please see the attached map to view the location of the road maintenance and detour routes.

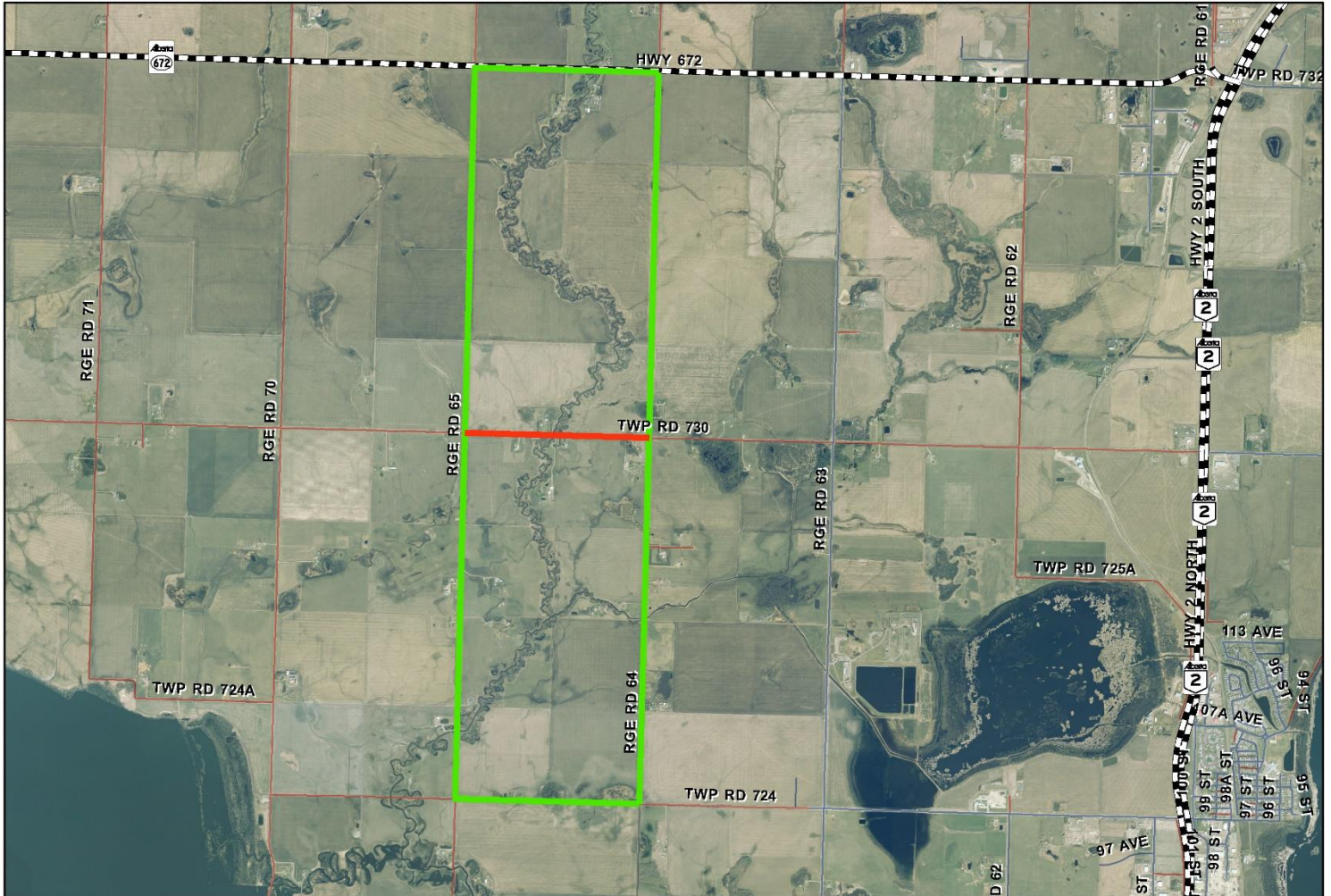
The County thanks residents and travellers for their patience and cooperation.

For more information, contact the Public Works department at 780-532-7393.

-30-

Media contact:

Dale Van Volkingburgh
Public Works Director
780-532-9722




LEGEND

-  Closure
-  Detour

ROAD CLOSURES

Road Closure

Township Road 730 between
RGE RD 64 and RGE RD 65

	County Public Works Department
Road Closure	
Date: 11-20-2020	
<small>NOT RESPONSIBLE FOR DAMAGES OR INJURIES</small>	