



Traffic Advisory – For Immediate Release Monday, June 30, 2018

Construction along Range Road 62 continues for Clairmont Lagoon Discharge Project

Starting on Tuesday, July 31, a section of Range Road 62, north and south of 150 Avenue, will be closed as work to install a sanitary forcemain continues.

Motorists are advised to detour using 162 Avenue or 158 Avenue. The anticipated completion date of this phase of the installation is mid-August, weather dependent. A forcemain is an underground pipeline that moves wastewater. This work is being done as part of the Clairmont Lagoon Discharge Project.

Please note that all start and completion dates are weather dependent.

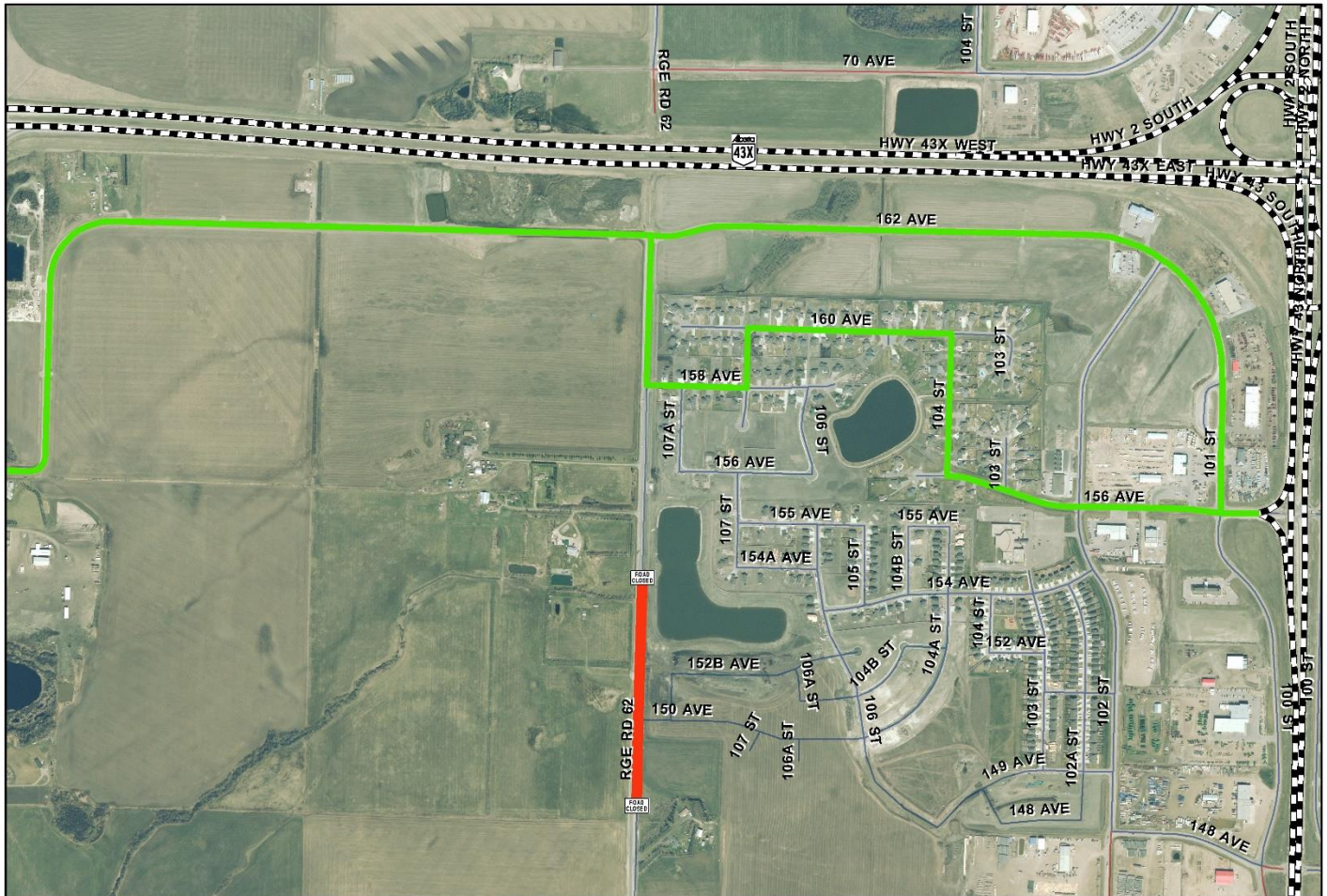
Please see attached for project map. The red line indicates the road closure and the green line indicates the detour routes.

The Clairmont Lagoon Discharge Project will connect Clairmont's wastewater collection system to Aquatera's larger collection system for Grande Prairie. This project will accommodate long term growth in Clairmont for wastewater treatment. The County has invested \$2.5 million in funding to the project alongside \$12 million in combined funding from Federal and Provincial government grant programs.

-30-

Media contact:

Dale Van Volkingburgh
Public Works Director
780-532-9722



LEGEND — Closure
— Detour

Road Closure

Range Road 62
Phase 2

	County Public Works Department
Road Closure	
<small>Author: J. Chaplin Date: 11-12-16 Scale: 1:1000 This map is for informational purposes only. It is not intended to be used as a legal document. The County of Grande Prairie No. 1 is not responsible for any errors or omissions on this map. © 2016 County of Grande Prairie No. 1</small>	