



## **Traffic Advisory – For Immediate Release Thursday, October 4, 2018**

---

### **Section of Township Road 710 temporarily closing next Tuesday for upgrades to CN railway crossing**

A section of Township Road 710/Evergreen Park Road, east of Resources Road, will close October 9 to complete upgrades to the railway crossing. The work is anticipated to be completed by mid-October, weather permitting.

Traffic requiring access to Range Road 710 as well as Evergreen Park during the closure can use the alternate entrance on Resources Road at Township Road 704A and Range Road 60.

Please see attached for the project map. The red line indicates where the intersection closure is and the green line indicates the detour route.

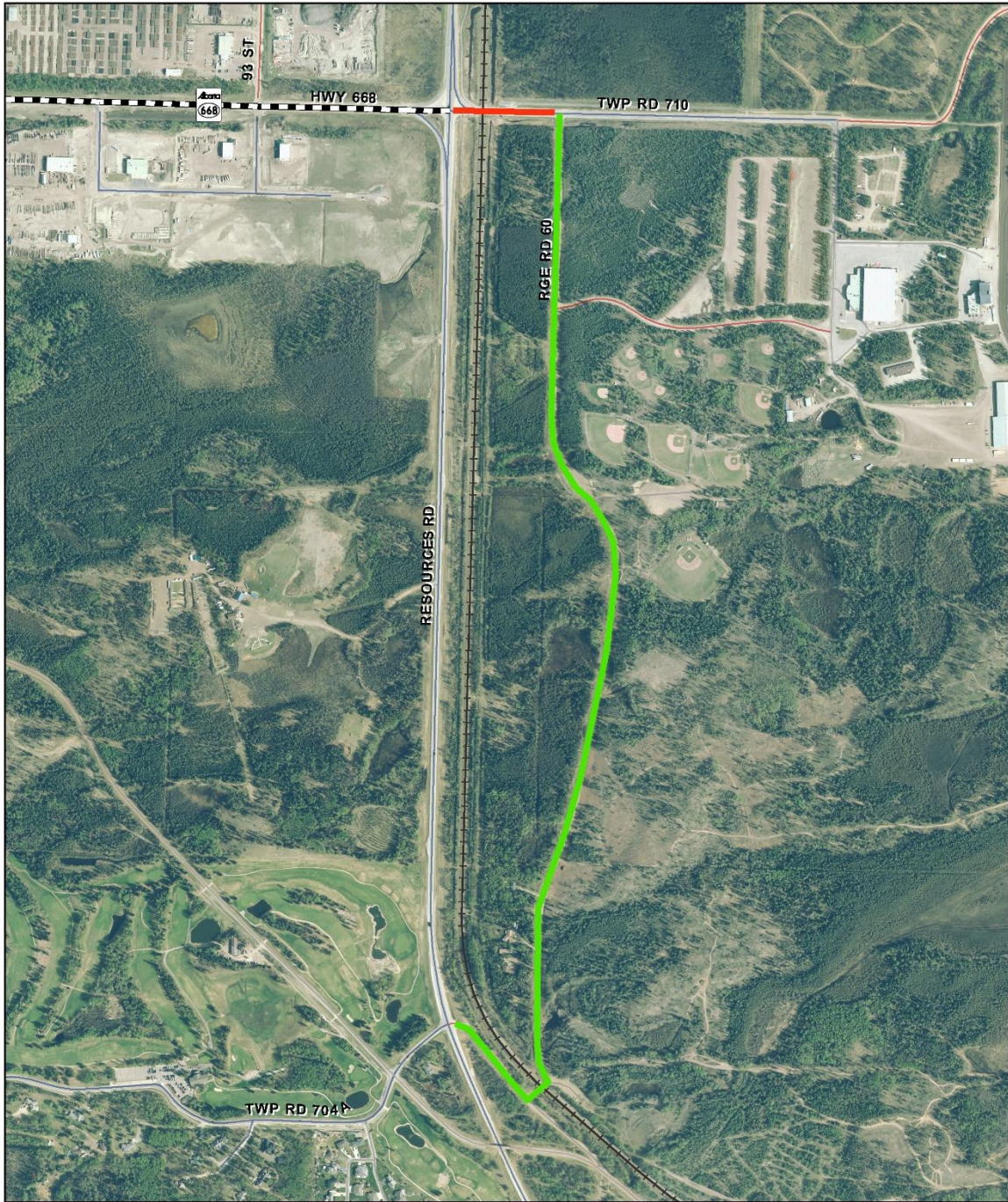
The County is investing a total of \$37.4 million in 2018 on capital road projects, and an additional \$20 million over 2017 and 2018 on road improvements in all nine divisions of the County. For a complete list of roads slated for upgrades this construction season, visit [www.countygp.ab.ca/roadconstruction](http://www.countygp.ab.ca/roadconstruction).





The County thanks motorists for their patience and cooperation throughout the construction season.

-30-

#### **Media contact:**

Dale Van Volkingburgh  
Public Works Director  
780-532-9722



	<b>LEGEND</b>  Closure  Detour Route <b>ROAD CLOSURES</b>	<h2>Road Closure</h2> <p>TWP RD 710 CN Rail Crossing @ Evergreen Park Entrance</p>		<b>County Public Works Department</b>  <b>Road Closure</b>
	<small>           All in Alberta            Under the Information Act            All rights reserved. ©2015 County of Grande Prairie            10001-84 Avenue, Clairmont, AB T8X 5B2            Phone: 780-532-9722 Fax: 780-539-9880            www.countygprairie.ab.ca         </small>		<small>           10001-84 Avenue, Clairmont, AB T8X 5B2            Phone: 780-532-9722 Fax: 780-539-9880            www.countygprairie.ab.ca         </small>	