



## **Traffic Advisory – For Immediate Release Tuesday, August 6, 2019**

---

### **Section of Township Road 711 temporarily closed due to road conditions**

Effective at 4 p.m. on Wednesday, August 7, Township Road 711 between Range Roads 71 and 72, will be closed until further notice.

High water levels caused by the recent heavy rainfall have created poor road conditions where the road crosses Spring Creek.

Work is underway to repair the section of road. In the meantime, motorists can detour using Range Road 73 and Township Road 710 to access Range Road 72 or Range Road 71 to access Township Road 712. Heavy traffic is advised to detour using Highway 40 and Highway 43.

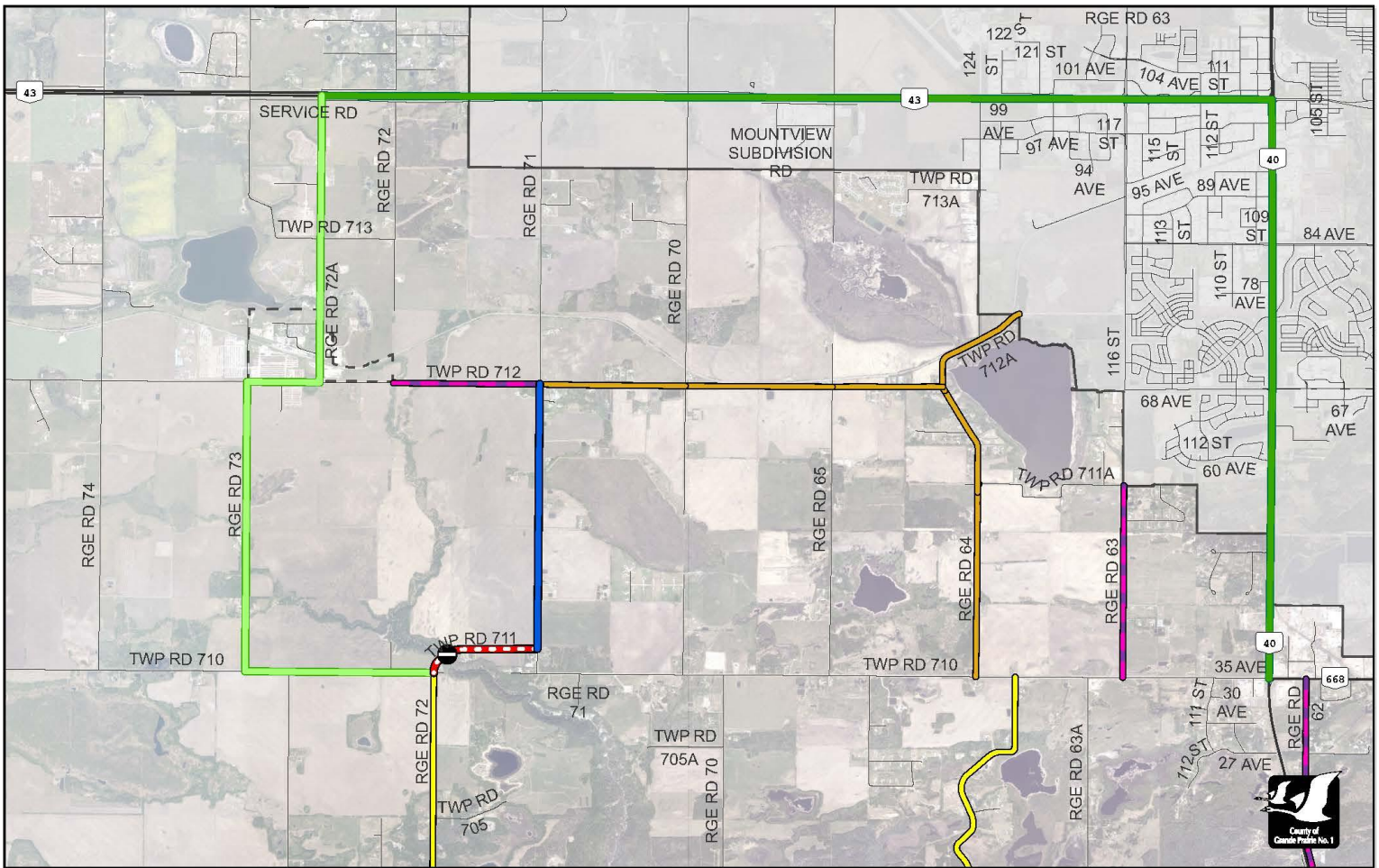
If you encounter an area of the County that requires immediate attention such as roads flooding, washed out or frozen culverts or significant road damage that impedes travel or has a significant risk to safety and property, please contact the Public Works 24-hour Emergency Line at 780-532-7393.

Residents with any non-emergency Public Works related questions and concerns are encouraged to contact Public Works at 780-532-9722 during regular business hours of Monday to Friday 8:30 a.m. to noon and 1 p.m. to 4:30 p.m. excluding holidays.

-30-

#### **Media contact:**

Dale Van Volkingburgh  
Public Works Director  
780-532-9722



## Road Restriction and Closure Notice

### Road Bans

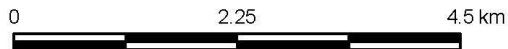
- 75% Road Ban
- Non-Truck Route
- Non-Truck Route - Permit Required

### Route Information

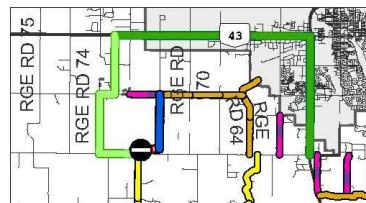
- Alternate Route
- Heavy Traffic Detour
- Restricted - Local Traffic Only

### Light Traffic Detour

- Light Traffic Detour
- Road Closure



Author: ashepherd  
Date Saved: 8/6/2019 8:49 AM  
Projection: NAD 1983 UTM Zone 11N  
Datum: North American 1983  
Path: X:\S\_A\_Team\RandomRequests\711 closure.ap



The County of Grande Prairie makes no representation or warranties regarding the information contained in this document, including, without limitation, whether the said information is accurate or complete. Persons using this document do so solely at their own risk, and the County of Grande Prairie shall have no liability to such persons for any loss or damage whatsoever.

County of Grande Prairie  
Public Works Dept.  
10001-84 Ave. Clairmont, AB T8X 5B2  
Web: countygp.ab.ca  
Email: info@countygp.ab.ca