



Traffic Advisory – For Immediate Release Friday, September 13, 2019

Section of Range Road 95 closing next week for road construction

Starting tomorrow, Range Road 95 from Highway 43 to Township Road 720 will be restricted to local traffic only to allow for grading work.

The anticipated completion date is mid-October, weather dependent.

Motorists can detour using Range Road 94, Township Road 720 and Highway 723.

Grading involves digging out an existing road structure to re-align level or widen the road and building a new road from the bottom up.

Please see attached for the project map. The red line indicates where the road closure and construction will take place.

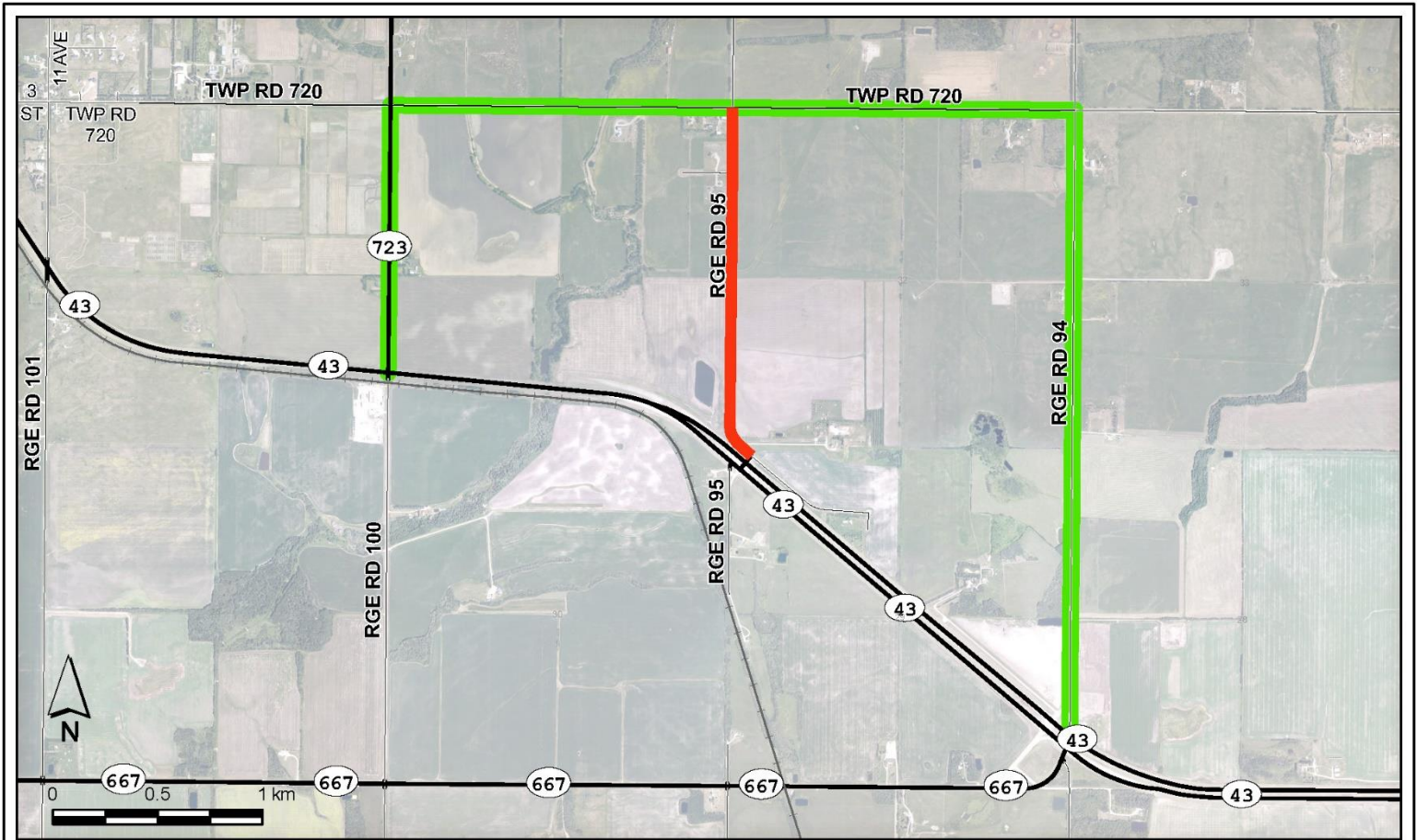
The County is investing a total of \$31.1 million on capital road and bridge projects this year. New construction this year includes 18.4 km of road surfacing including the paving of gravel roads, surfaced road overlays, and re-construction. For a complete list of roads slated for upgrades this construction season, visit www.countygp.ab.ca/roadconstruction.

The County thanks motorists for their patience and cooperation throughout the construction season.

-30-

Media contact:

Dale Van Volkingburgh
Public Works Director
780-532-9722



LEGEND

- Detour
- Restricted - Local Traffic Only

RANGE ROAD 95 CLOSURE & DETOUR



The County of Grande Prairie makes no representation or warranties regarding the information contained in this document, including, without limitation, whether the said information is accurate or complete. Persons using this document do so solely at their own risk, and the County of Grande Prairie shall have no liability to such persons for any loss or damage whatsoever.

County of Grande Prairie
Public Works Dept.
10001-84 Ave Clairmont, AB T8X 5B2
Web: countygp.ab.ca
Email: info@countygp.ab.ca