



## **Media Release – For Immediate Release Tuesday, May 7, 2019**

---

### **UPDATE: New Detour Routes Established as Road Work Continues on Range Road 64**

Motorists are reminded that Range Road 64 from Township Road 710 (also known as the Correction Line) to Township Road 711A is closed while ATCO Gas and the County of Grande Prairie work on a gas line.

A portion of Range Road 64, from Township Road 710 to Township Road 711A, is accessible to local traffic only. Access to Township Road 711A is also reduced to local traffic only due to current road conditions.

Motorists are advised to detour using Range Roads 63 & 65, and Township Roads 710 & 712.

The work is expected to be completed by the third week in May.

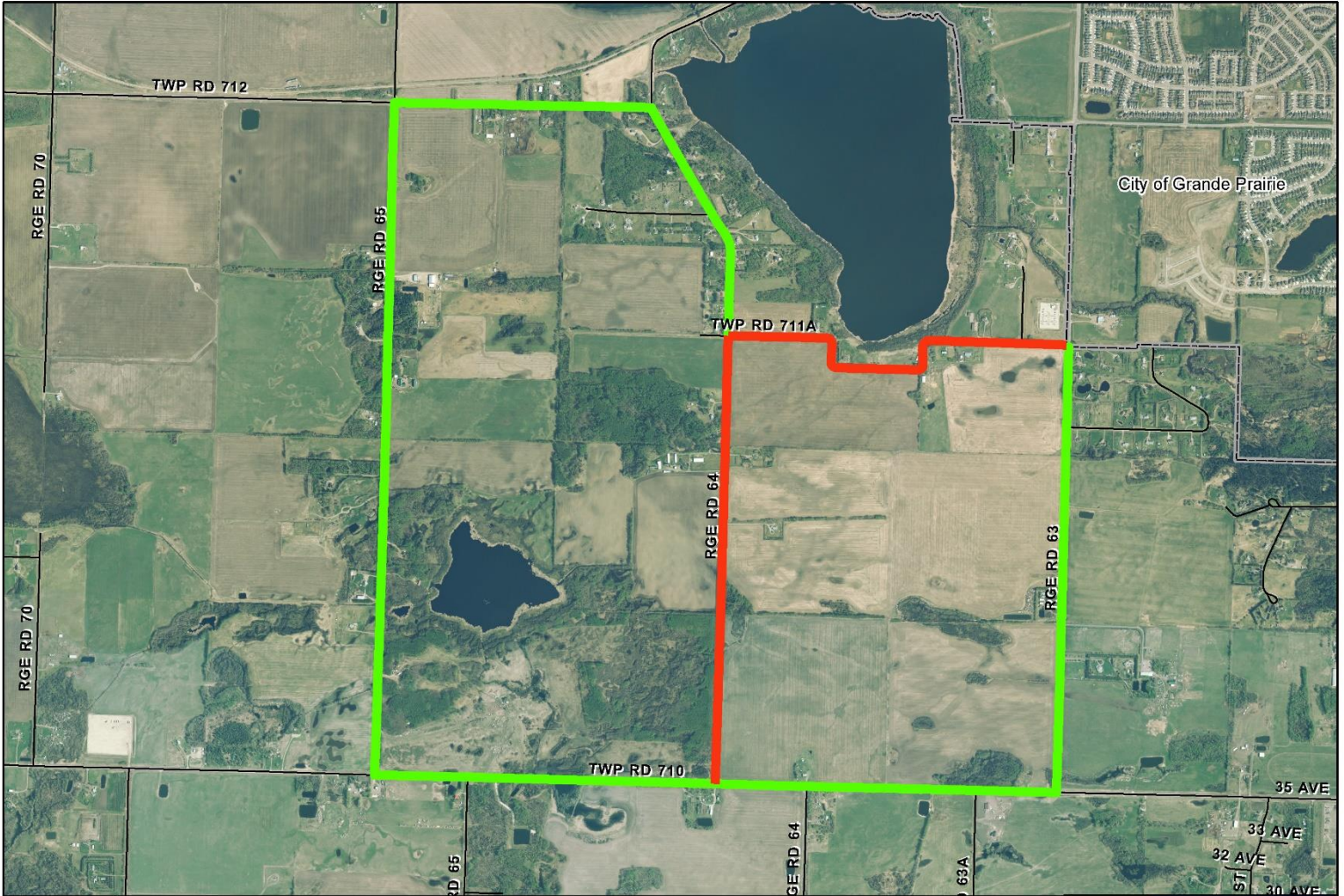
All start and completion dates for road construction and rehabilitation projects are weather dependent.

Please see the attached map, which indicates the location of the road closure and detour routes.

-30-

### **Media contact:**

Clint Diederich  
Public Works Operations Manager  
780-532-9722



**LEGEND**

- Detour
- Closed - Local Traffic Only

**Road Closure**

 County Public Works Department
<b>Road Closure</b>
<small>           Author: Craig Allison            Date: 02 May 2016            This map is for informational purposes only. It is not intended to be used as a legal document. The County of Grande Prairie is not responsible for any errors or omissions.         </small>