



Traffic Advisory – For Immediate Release Thursday, September 5, 2019

Section of Range Road 44 temporarily closing for culvert replacement next Wednesday

Effective Monday, September 9, 2019, Range Road 44 from Township Road 742 to Highway 674 will be temporarily closed for a culvert replacement. A culvert is an underground steel tunnel that carries stream water.

The project is anticipated to be completed by late-October. Traffic is advised to detour using Highway 674, Range Road 45 and Range Road 43 to access Range Road 44 north of the bridge culvert.

All start and completion dates for bridge repairs are weather dependent.

Please see the attached map to view the location of the culvert replacement and detour routes.

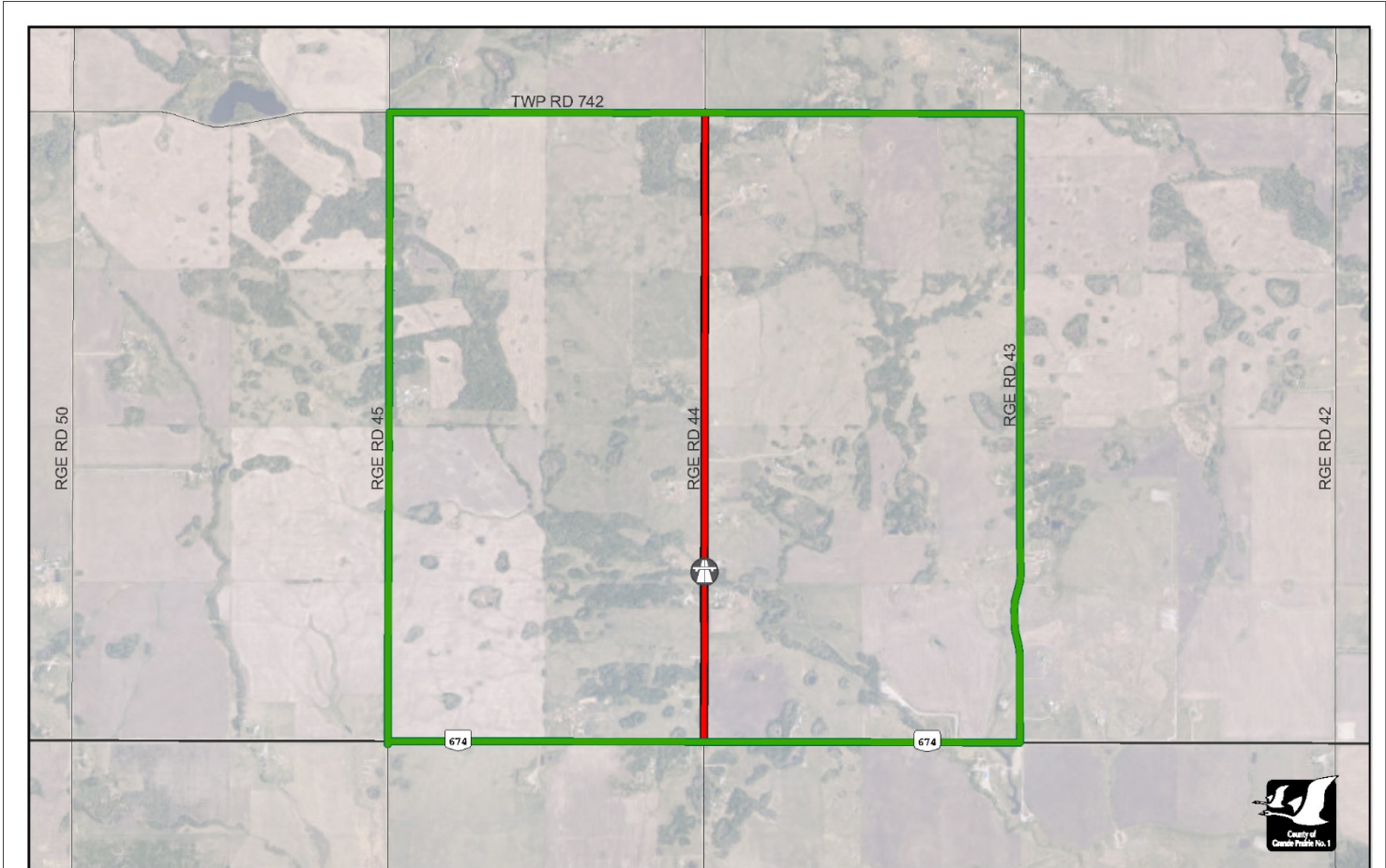
The County thanks residents and travellers for their patience and cooperation while bridge repairs are underway.

For more information, contact the Public Works department at 780-532-7393.

-30-

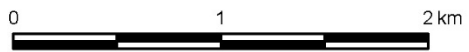
Media contact:

Dale Van Volkingburgh
Public Works Director
780-532-9722

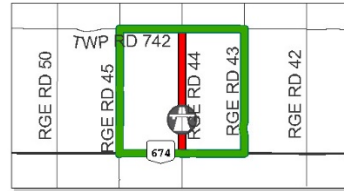


Road Restriction & Closure Notice

Route Information — Restricted - Local Traffic Only
— Alternate Route  Bridge



Author: ashphard
 Date Saved: 7/26/2019 4:11 PM
 Projection: NAD 1983 UTM Zone 11N
 Datum: North American 1983
 Path: \\VA_Sm\RandomRequests\072459.docx



The County of Grande Prairie makes no representation or warranties regarding the information contained in this document, including, without limitation, whether the said information is accurate or complete. Persons using this document do so solely at their own risk, and the County of Grande Prairie shall have no liability to such persons for any loss or damage whatsoever.

County of Grande Prairie
 Public Works Dept.
 10001-84 Ave Clairmont, AB T8X 5B2
 Web: countygp.ab.ca
 Email: info@countygp.ab.ca