



News Release – For Immediate Release, Thursday, September 24, 2020

Area Structure Plan Underway for Northeast Clairmont Area

Residents, businesses, and other community members are encouraged to have their say on the future of the northeast section of the Hamlet of Clairmont.

An Area Structure Plan (ASP) is being developed for the area located north of Highway 43, east of Clairmont Lake, south of Township Road 730, and to the east boundary of Clairmont. The plan will guide future development of the over 3,300 acres, outlining future land use and development plans, including roads and other infrastructure.

“We want to hear from anyone who has feedback, concerns or just wants to learn more about the potential plans for northeast Clairmont,” said Stuart Wraight, Senior Planner. “This is the first round of engagement that will inform long-term development for the area, so we hope to see the public share their thoughts.”

The public is invited to register for a virtual information session on Thursday, October 8, from 6:00 to 8:30 p.m., including a presentation, summary of feedback from area landowners and technical experts, followed by an online question and answer session. More details are available at www.countygp.ab.ca/NEClairmontASP. Those interested in attending the session can [register online](#), or contact Planning & Development Services at plan@countygp.ab.ca or 780-513-3950.

Those unable to attend the virtual session will still have an opportunity to provide feedback about the future development of the plan area through a survey available at www.countygp.ab.ca/NEClairmontASP from October 9 to 25.

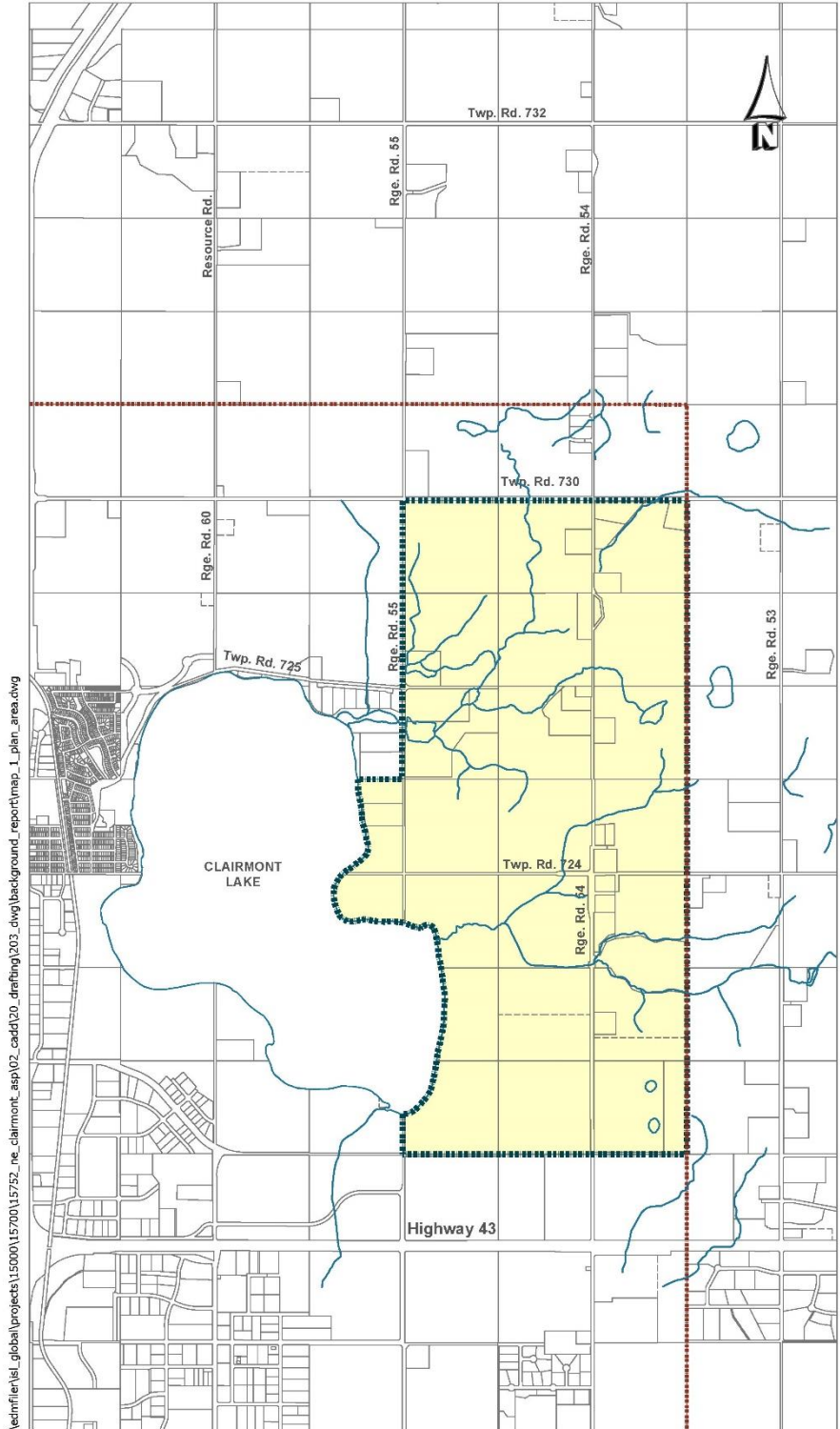
Feedback from the first round of engagement will be used to draft an ASP, which will come back to the public for the second round of review and feedback before it's finalized next year.

ASPs provide a framework for the development of lands for commercial, industrial and residential purposes. The plans ensure development aligns with the goals, objectives and policies of the County and are prepared in accordance with the Municipal Government Act, Subdivision and Development Regulation, and the County's Municipal Development Plan.

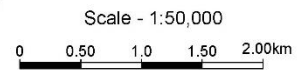
-30-

Media Contact:




Stuart Wraight
Senior Planner
780-532-9722



NORTHEAST CLAIRMONT
AREA STRUCTURE PLAN



LEGEND

-  Northeast Clairmont ASP Boundary
-  Clairmont Hamlet Boundary
-  Plan Boundary

\\cednfiles\isl_global\projects\15000\15700\15752_ne_clairmont_asp\02_cadd\20_drafting\203_dwg\background_report\map_1_plan_area.dwg



September 2020