

COUNTY CONNECTIONS



WINTER 2024



County of
Grande Prairie No. 1

- | | | | |
|---------------------------|----------------------------------|----------------------------|--------------------------------|
| 2 Interim Budget Meetings | 6 FireSmart Tips for Winter | 11 Winter Road Safety Tips | 16 Winter Activities |
| 3 Apply for County Grants | 7 Firefighter Recruitment | 12 Sign up for TIPP | 18 Holiday Hours |
| 4 2024 Census Highlights | 9 New Enforcement Superintendent | 13 Property Inspections | 21 Beware of Scams |
| 5 Election 2025 | 10 Community Safety Coordinator | 14 Seasonal Ag Reminders | 22-23 Sportsplex & Dino Museum |

Reeve's Message



As we approach the end of 2024, it's hard to believe how quickly this year has flown by. It has been a year of hard work, and I want to take a moment to reflect on our accomplishments and share what lies ahead in 2025.

Electoral Boundary Review and Municipal Census

One significant project this year was the Electoral Boundary Review. After welcoming the former Village of Hythe as a hamlet within the County in 2021, the Government of Alberta mandated that we review our boundaries prior to the municipal election coming up in October 2025, to ensure adequate representation.

We made great efforts to engage the community and the feedback we received indicated a preference to stay with the existing governance structure. Council therefore decided to maintain our current nine electoral boundaries and councillors.

We also completed our first municipal census in 12 years, with an exceptional response of just over 95 per cent – thank you to everyone who participated! An accurate population count helps ensure adequate funding and resources for our community. See page 4 and 5 for more on the electoral boundary review and census.

Upcoming Budget Meetings

Preparations for 2025 start with the Interim Budget Meetings on December 11-13. Council will consider various factors, including inflation, to ensure we balance the costs of programs and services that enhance our quality of life. We'll be livestreaming the meetings, so I invite you to listen in and learn more about the budget process and the priorities for 2025. Meeting times and live stream links can be found under the Council Meetings at www.countygp.ab.ca.

Staff Welcome

A warm welcome is extended to Lee Brachmann, who joined the County in November as our new General Manager of Community Services. Lee has a strong leadership background in community development, with nearly two decades of policing experience. We are looking forward to his contributions to help improve the quality of life for residents.

Kyle Palfy, featured on page 9, is the new Superintendent of County Regional Enforcement Services. Kyle joins us at a pivotal time as we continue our focus on crime prevention. We also want to express our heartfelt gratitude to outgoing Superintendent Stuart Rempel, who retired after 30 years of dedicated service. His leadership has made a lasting impact on our community.

We welcomed Corinne James to the team as our first Community Safety Coordinator. Corinne has nearly 30 years of experience in public safety and health and will be using her knowledge and experience to help tackle rural crime. Meet her and learn more about the role on page 10.

Plan Your County Update

It's been a busy past few months for our ongoing Plan Your County project, including the update to the County-City Intermunicipal Development Plan (IDP). This document outlines how development will occur along our borders to ensure growth that benefits all residents. More information on the IDP can be found at www.engagecountygpc.ca/city-county-idp.

Work continues with the update to the Municipal Development Plan (MDP), with the next phase of consultation expected in early 2025. I cannot stress enough the importance of resident engagement in our ongoing discussions about land use. Your voice matters and each time you provide input, it helps Council make better decisions. Learn more at www.countygp.ab.ca/PlanYourCounty.

Advocacy for the Philip J. Currie Dinosaur Museum

We recently sent a letter to provincial Ministers Fir, Schow, and Loewen, regarding the vital role the museum plays in our region. We have one of the densest fossil sites in the world and the recent extraction of Big Sam demonstrates how important this facility is for ongoing scientific discovery, plus economic benefits and tourism. Despite its success, the museum faces funding challenges to cover its annual operating costs and we are looking to the province to explore partnership opportunities to help ensure the future viability of this important facility.

Working with our Municipal Neighbours

Collaboration with our municipal neighbours is a key to our success and that of the region. In addition to the County-City IDP, we also renewed our recreation agreement and amended our fire agreement with the Town of Wembley. We're also working with the towns of Beaverlodge, Sexsmith, and Wembley as part of the Invest NW initiative to enhance economic development growth and investment. Learn more at www.InvestNWAAlberta.ca.

Stay Active and Safe this Winter

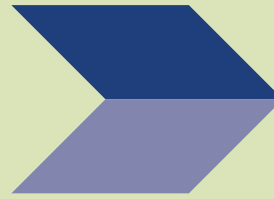
We all know winter is a reality for our region but don't let it keep you from being active. See page 20 to learn about County trails and snowshoeing opportunities and mark your calendar for our Frostival event in March.

We had another busy wildfire season this year and it is becoming increasingly important that we remain diligent and cautious at all times. Page 6 includes winter FireSmart™ practices to reduce fire risks leading into next spring.

Winter and the holiday season bring other risks, and we've included winter driving tips on page 11, along with information to avoid holiday scams on page 21. Let's ensure we all enjoy a safe and festive season.

As we wrap up this year, I want to extend my heartfelt Christmas and holiday greetings to each of you. Thank you for your continued support and engagement with the County of Grande Prairie. Together, let's hope for a prosperous 2025 filled with opportunities and community growth.

Stay safe, stay engaged, and enjoy the winter season!



Interim Budget Meetings

Every December, County Council holds meetings to review financial plans for the upcoming and following years.

The interim budget meetings provide an opportunity for Council to review the planned budgets. Final budget meetings are held in the spring to finalize all the numbers. The budget meetings are available to the public via live stream.

Find connection instructions and meeting agendas under Council Meetings at www.countygp.ab.ca.

Interim meetings for the 2025 budget:

December 11, 12 & 13 | 9:30 a.m. - 5:00 p.m.

Questions? Contact Financial and Business Planning Services at 780-532-9722.

Save the Date

DECEMBER 2024

Wed Thurs Fri

11 12 13

Grant Applications Open February 1

The County of Grande Prairie invests millions of dollars in grants each year to enhance the well-being of its residents and support committed local citizens who put the funds to work for their communities.

Get ready to apply for Recreation and Culture grants. Visit www.countygp.ab.ca/grants for information and online applications.

Operating and Capital Grants

If you're a part of a local non-profit organization that offers recreational or cultural programming for County residents, apply for Operating Funds or Minor Capital projects for a maximum award of \$5,000. Applications are open from February 1 to April 1. In 2024, the County provided \$210,870 to 59 community groups, and County facilities received \$498,110 in annual operating funding in addition to support from existing intermunicipal funding agreements with neighbouring municipalities.

Community Beautification Initiative Grants

Would you like to improve your community's appearance and enhance community pride through landscaping? In 2024, the County supported four projects: the expansion of the Clairmont Community Garden, flower boxes in Valhalla and Clairmont, and landscape upgrades at the Bezanson Community Centre.

Cemetery Improvement Grants

Are you part of an organization that operates a cemetery in the County? Applications are open from February 1 to April 1 for Operating or Capital projects up to a maximum of \$5,000 annually. In 2024, the County provided \$41,920 to nine cemetery groups for maintenance, fencing, and a columbarium installation.

Community Assistance Grants

Not-for-profit organizations and groups may qualify for funding and/or non-cash donations to support programs, services, and events. While we accept applications for three funding streams throughout the year, applications officially open on February 1.

Multi-Year Operating Funding Grants

This funding is available for operational costs for community groups that serve County residents but do not qualify as recreation or culture providers. It also applies to larger

organizations and facilities that are not classified as halls, arenas, or curling rinks, yet contribute to the quality of life.

Contact Recreation and Culture at 780-532-9727 before completing an application. As of October 2024, over two million dollars has been awarded in multi-year operating funding.

Community Wellness & Safety Grants

Does your group or organization contribute to a safe and healthy community? Or foster connections through socially inclusive services that may fall outside existing Family Community Support Services (FCSS) social services and community grants? As of October 2024, grants were awarded to the Grande Prairie District Rural Crime Watch Association, Alberta Farm Mental Health Network and Sea to Sea for PTSD.

Event Sponsorship, Donations & Community Support Grants

This funding is open to groups or organizations that provide cultural and recreational opportunities or contribute to the quality of life. However, events that fundraise for other organizations are not eligible. By October 2024, more than \$71,000 had been awarded, including \$25,000 to the Bear Creek Folk Festival and funding for sport hosting events such as the Alberta Schools' Athletic Association (ASAA) football, Pirates Fastball, and the Peace Country Wolves Athletic Club (PCWAC) Cross Country Championships.

Some of the 2024 Multi-Year Operating Funding Recipients:

- \$475,078 Grande Prairie Regional Agricultural & Exhibition Society
- \$400,000 to the Philip J. Currie Dinosaur Museum
- \$200,000 for STARS Operating Funding
- \$100,000 for STARS Fleet Renewal
- \$86,000 to the Art Gallery of Grande Prairie
- \$77,572 to the South Peace Regional Archives
- \$70,000 to the Grande Prairie Regional Hospital Foundation
- \$58,072 to the Grande Prairie Regional Sport Connection
- \$50,000 to the Nitehawk Adventure Park

Did you know the County supports building and maintaining recreational ice surfaces on County Municipal Reserve land? Visit www.countygp.ab.ca/icesurfaces if you'd like to apply for a Neighbourhood Ice Surface Grant. Apply by December 31.

2024 Census Highlights – Our County at a Glance

County of Grande Prairie Census completed between April 3 and July 2, 2024



TOTAL POPULATION
26,701

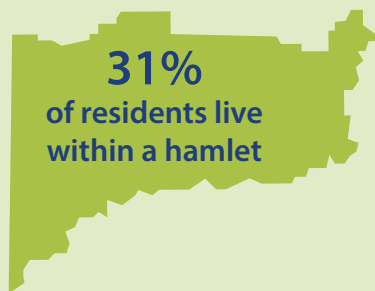
Based on a 95.2 per cent response rate

FAMILY PHYSICIAN ACCESS

62% have a family physician in the Grande Prairie region
5% have a family physician located outside the region
27% do not have a family physician



WHERE WE LIVE



6,123 Clairmont, third largest hamlet in Alberta
835 Hythe
736 Wedgewood
<200 All other hamlets



OUR DWELLINGS

10,278 Residential Addresses

9,372 occupied dwellings

906 vacant parcels, dwellings under construction, vacant dwellings

HOME OWNERSHIP



86%
owned



10%
rented

OUR HOMES



73%
single-detached



3%
row house

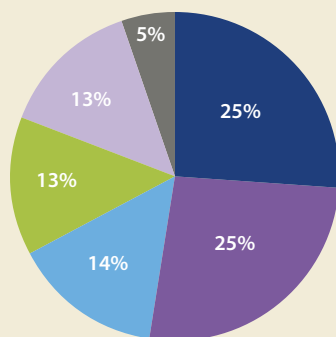


20%
mobile home



3%
semi-detached

COMMUNITY AGE PROFILE



■ 45-63 ■ 65+
■ 25-44 ■ 14-24
■ 5-13 ■ 0-4

WHERE WE WORK

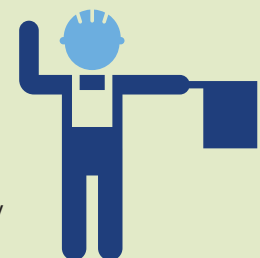


24% in the County of Grande Prairie

21% in the City of Grande Prairie

4% in Beaverlodge, Sexsmith, Wembley or the MD of Greenview

23% retired or commute to other areas for work



All percentages are rounded to the nearest whole number. Ministerial approval of the population numbers will occur with the publication of the 2024 Municipal Affairs Population List by January 2025.

Considering Running in the Next Municipal Election?



Interested in running for County of Grande Prairie Council in the next municipal election? Here is a list of key dates and information you need to prepare.

Important Dates



January 1, 2025 – First Day of Nomination Period

- Note: County Offices will reopen to the public following the holiday season on January 2, 2025 to accept nomination papers.
- The nomination period runs from January 1, 2025 to September 22, 2025 at noon.
- Candidate information packages, including all necessary forms for submitting nomination papers, will be available at www.countygp.ab.ca/elections or at the County Administration Building during office hours.
- Candidates can file nomination papers anytime during the nomination period with the Returning Officer during office hours.



September 22, 2025 – Nomination Day

- Nomination papers must be filed by noon.



October 20, 2025 – Municipal Election Day

- Voters will be required to have a valid government issued photo ID to vote. For example, an identification card issued by a Canadian government, (federal, provincial, or local) or an agency of that government, which contains a photograph of the person.
- Voters will be required to register to vote in Municipal Elections as per proposed changes to the Local Authorities Election Act (Bill 20 – Municipal Affairs Statutes Amendment Act, 2024). Voters are encouraged to register to vote by visiting www.voterlink.ab.ca in advance of the election.

Voter Information

If you are an Alberta resident who can legally live in Canada and do not have a valid government issued photo ID, you can apply for an ID card to use as photo identification by visiting Registry Services.

Election Workers Needed!

Applications will be available on the County website starting January 2025.

For more information on Municipal Elections or becoming a candidate, contact the County's Legislative Services department at elections@countygp.ab.ca or 780-532-9842 ext. 3393 or visit www.countygp.ab.ca/elections.

For office location and hours visit www.countygp.ab.ca or see the back page of this newsletter.

Electoral Boundary Review Update

On September 23, 2024, the County of Grande Prairie Council gave first reading to Bylaw 3236, the Divisional Boundaries and Council Composition Bylaw. The Electoral Boundary Review was mandated by the provincial government after the 2021 dissolution of the Village of Hythe.

The review process, which included public engagement and population analysis, aimed to balance representation while preserving community connections. Council ultimately decided to maintain the current boundaries and directed the preparation of the bylaw.

The bylaw will receive final reading in December 2024, following the 60-day petition period. Stay informed at www.countygp.ab.ca/EBR.

Essential FireSmart™ Tips for Winter



Even in winter, wildfires remain a concern. Without snow cover, dry grass can become easily ignited, and sparks from controlled fires, like campfires or burn barrels, can inadvertently start winter wildfires. Keep these tips in mind:

- **Weather Awareness:** Check the weather forecast for snow conditions and wind predictions before starting any fire.
- **Avoid Inversions:** Refrain from burning during inversions, which trap smoke close to the ground.
- **Consult Authorities:** Contact County Regional Fire Service for advice on large winter burning projects near communities or roads.
- **Snow Cover:** Ensure your burn area is covered by more than 15 centimeters of snow. As snow melts in spring, check burn piles as they can reignite in spring winds.

Winter Brush Piles and Windrows

Winter is ideal for burning brush piles and windrows due to the low risk of fire spreading. Follow these precautions to help avoid holdover fires in the spring:

- **Be Prepared:** Have the right tools and water ready to control the fire.
- **Droughts:** Be cautious during drought conditions as fires may continue to burn underground.
- **Check for Smouldering:** Use a metal rod to test if the fire is completely out. If the rod is warm, the fire is still active.
- **Soak, Stir, and Soak Again:** Extinguish fires by soaking thoroughly, stirring, and soaking again. Use heavy equipment if necessary to ensure the fire is out.

Keep Winter Fires in Check for a Safer Spring

Throughout the winter, many of our local farmers engage in what's known as winter burning – a critical practice for clearing areas of brush, trees of stubble, crop residue, and other agricultural waste. Although this method has been recognized for generations as a suitable method to dispose of wood and organic waste, it does have an inherent risk.

Here are some tips on how you can help manage the risk of holdover fires during winter:

- **Monitor Burn Sites:** After conducting a winter burn, regularly monitor the site for signs of smouldering or holdover fires. This includes checking for smoke, heat pockets, or any unusual activity at the burn site, especially as the snow melts and the weather warms up. Continue to check your piles throughout the spring season by inserting a steel rod or pry bar down into the pile – if it's hot, the pile is still burning inside or underground. Stirring the burn pile helps ensure it's completely extinguished.
- **Maintain a Buffer Zone:** Create and maintain a buffer zone around the burned area. This zone should be free of flammable materials and vegetation that could catch fire easily. By having a clear area, you can prevent a holdover fire from spreading to nearby fields or forests.

- **Employ Fire Suppression Tools:** Keep fire suppression tools and equipment, such as water tanks, hoses, and extinguishers, readily available and in good working condition. Quick access to these tools can make a significant difference in containing a fire before it escalates.
- **Follow Up with Tillage:** Consider tilling the burned area. Tilling can help extinguish any remaining embers by burying them under the soil, reducing the oxygen supply needed for combustion.
- **Collaborate with Family and Neighbours:** Work together with neighbouring farms and properties to monitor and manage fire risks. Sharing information about planned burns and potential holdover fires can help create a community-wide awareness and response plan.
- **Report and Communicate:** If a holdover fire is detected, report it immediately by calling 9-1-1, not your friends or family. Providing timely and accurate information can help mobilize resources to address the fire quickly and effectively.

County Continues to Recruit Local Rural Responders

The County Regional Fire Service wrapped up another successful recruitment campaign in October. With flexible, paid positions available for firefighters and medical first responders, this program offers residents the chance to make a meaningful impact in their communities.

Applications are accepted year-round, but the fall and winter recruitment campaigns are timed to align with the County's professional training sessions offered twice annually. Responders gain valuable skills while receiving compensation for their service and training—at no cost to them.

Joining the team means serving neighbours during critical moments and enjoying the benefits of flexible scheduling, paid training, and ongoing development opportunities. Responders grow both personally and professionally, whether gaining advanced medical skills or leadership experience.



If you missed the latest campaign, the County is always looking for committed individuals to step up and serve their community. The next wave of local responders could include you. Don't miss this opportunity, apply today to be part of the team. Learn more and apply online at: www.countygp.ab.ca/firerecruit

Ignite Your Future: ATCO Fire Cadet Program Welcomes New Applicants



The ATCO Fire Cadet Program continued with a second successful intake of new cadets.

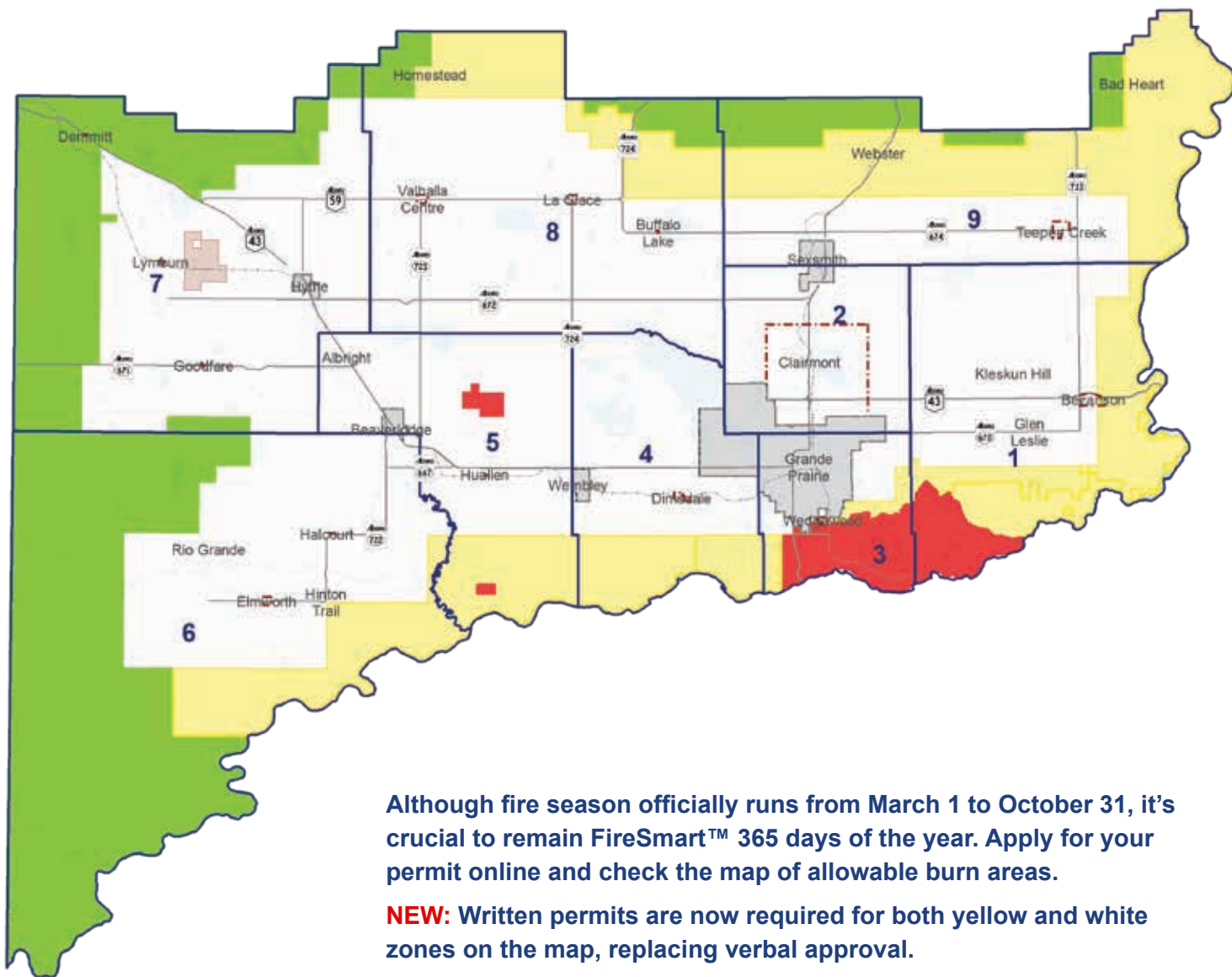
This next group of cadets will explore firefighting and emergency services as potential career paths. Supported by ATCO's ongoing three-year \$18,000 commitment, the program offers valuable hands-on experience to Grades 10-12 students before graduation.

Representatives from the County Regional Fire Service held information sessions in five area high schools in September and October: Beaverlodge Regional High School, Peace Wapiti Academy, Sexsmith Secondary School, St. John Paul II Catholic School, and St. Joseph Catholic High School.

For more information about the program and future intakes, visit www.countygp.ab.ca/cadets.

Prepare for Fire Season

March 1 to October 31



Although fire season officially runs from March 1 to October 31, it's crucial to remain FireSmart™ 365 days of the year. Apply for your permit online and check the map of allowable burn areas.

NEW: Written permits are now required for both yellow and white zones on the map, replacing verbal approval.

COUNTY WHITE & YELLOW AREAS

Require a written fire permit during fire season.

COUNTY RED AREA

Restricted burn zone. Permits are required year-round. If you live in one of these three areas, complete the Fire Permit Request Form at www.countygp.ab.ca/firepermits or contact your area's Fire Guardian.

COUNTY GREEN AREA

Requires a written fire permit during fire season from a Provincial Forestry Fire Guardian as this area is designated as the Forest Protection Area. If you live in this area, visit www.wildfire.alberta.ca/firepermits to locate your nearest office or call 310-0000.

Kyle Palfy Appointed New Superintendent of County Regional Enforcement Services



The County of Grande Prairie welcomed Kyle Palfy as the new Superintendent of Regional Enforcement Services in November. With over 26 years of comprehensive policing experience, including 13 years in senior leadership roles with the Grande Prairie RCMP, Palfy brings a wealth of knowledge and expertise to this critical position.

Mr. Palfy has demonstrated exceptional leadership, strategic planning, and community engagement throughout his career. Notably, during his time at the McLennan RCMP Detachment, he successfully rewrote their Emergency Operations plans to align with national and provincial standards. His strengths in policy development and strategic thinking will be key to leading the County's enforcement initiatives.

In his previous roles with the RCMP, Palfy was instrumental in supervising personnel across various units, collaborating closely with City and County officials to address community concerns. His work at the Western Alberta District RCMP and Battlefords RCMP Detachment centered on strategic leadership, stakeholder engagement, financial management, and operational oversight, ensuring public safety remains a top priority.

"I am honoured to take on this role and look forward to collaborating with community partners to enhance public safety and strengthen our regional enforcement efforts," says Palfy. "Together, we can build a safer, more resilient community."

Palfy replaced outgoing Superintendent Stuart Rempel, who is retired from County Regional Enforcement Services after 30 years.



Sign Up and Stay Informed

The County offers many ways to stay connected to the information you need as a County resident. Use the links below to find out more and reach out to your Councillor:

- News: www.countygp.ab.ca/subscribe
- Voyent Alert (see page 10): www.countygp.ab.ca/alerts
- Engage and provide feedback: www.countygp.ab.ca/engage
- Events calendar: www.countygp.ab.ca/events
- County Councillors: www.countygp.ab.ca/council



Corinne James New Community Safety Coordinator

In September, we welcomed Corinne James, the County's first Community Safety Coordinator. With nearly 30 years of experience in public safety and health, Corinne brings a wealth of knowledge, including her recent role as Occupational Health and Safety Lead Investigator for the Government of Alberta.

This new role demonstrates the County's commitment to tackling rural crime. Corinne will be key in working and connecting with residents, regional organizations, and law enforcement to implement crime prevention and community policing initiatives.

Corinne says she's passionate about connecting with communities, listening to their needs, and working together to create a safer, healthier environment. "This role allows me to engage with residents and provide the support they need to make the County an even better place to live."

Receive Snow Removal Updates



EVERYDAY COMMUNICATIONS

Voyent Alert! is a multi-purpose communication service provided by the County of Grande Prairie to keep you informed of critical events like fires or floods and day-to-day communications such as snow removal updates, and service disruptions.

1. MOBILE APP USERS:

Get the Voyent Alert! app from the App Store or Google Play.

2. EMAIL OR TEXT (SMS) USERS:

Register online to receive email or text-based alerts.

3. LANDLINE PHONE USERS:

Register online to receive text-to-voice alerts.

Sign up for all today to ensure you never miss an alert!



Download the app or register for alerts at

www.countygp.ab.ca/alerts



The service includes land within the County of Grande Prairie boundaries only. This does not include the City of Grande Prairie or the towns of Beaverlodge, Sexsmith, and Wembley. Addresses are provided by Google Maps. Please check to ensure the location of your pin is accurate and reflects your home, work, or any other address you are registering for alerts.



Explore the County Web Map

Winter Road Safety Tips

Five Tips for Sharing the Road with Snowplows

1. Slow down when you see a snowplow and stay at least 70 feet (five car lengths) back.
2. Avoid stopping too close. Snowplows spread de-icing materials from the rear.
3. Give the snowplow space; their visibility is limited.
4. Be cautious when passing; the front plow may extend across lanes.
5. Allow extra room in high-risk areas like hills, curves, and bridges.

Winter Driving Tips

Winter roads covered in ice and snow can challenge even the most skilled drivers. Before heading out, remember to take steps to ensure a safe journey.

- 1. Reduce Your Speed:** Icy roads make your vehicle harder to control. Slowing down gives you more time to react.
- 2. Keep a Safe Distance:** Increase the gap between your car and others. Stopping on icy roads can take four to ten times longer than on dry pavement.
- 3. Know Your Route:** Ice tends to form faster on bridges, overpasses, intersections, and hills. Adjust your speed when approaching them.
- 4. Start Early:** Give yourself extra time to reach your destination. Don't be tempted to rush or speed.
- 5. Prepare for the Unexpected:** Keep essential emergency items in your vehicle and have a contact person in case you need assistance.
- 6. Buckle Up:** Seat belts remain the most effective safety device in crashes.

Holiday Driving: Know Alberta's DUI Penalties

Driving under the influence (DUI) is a serious offense with significant penalties in Alberta, including Immediate Roadside Sanctions (IRS) and potential Criminal Code charges. Penalties escalate with repeated offenses, reflecting the increased risk to public safety. For detailed information on impaired driving penalties, please visit www.alberta.ca/impaired-driving-penalties



Have you ever found yourself looking for a map of your subdivision? Need a birds-eye view of your farmstead, or simply a map to submit with your development permit? Our online Public Web Map tool is a valuable asset for you to use, free of charge.

The tool provides access to Geographic Information Systems (GIS) resources for residents, businesses, and organizations across the County of Grande Prairie and our neighbouring towns. Scale the map to meet your needs, whether it's a close-up of your property or a larger view of your region.

The program offers an assortment of tools to measure distance and create printable PDFs.

Check out the County's Public Web Map at www.countygp.ab.ca/publicwebmap.

Purchase a Printed Map

Are you interested in a large-scale map of the County of Grande Prairie but don't have access to a printer? Printed maps measuring 54" wide by 42" high are updated annually and available for purchase on our website at www.countygp.ab.ca/store.

MyProperty

Convenient access to your utility and property tax information

Key features:

- **Online access:** Easily view your utility and property tax information online.
- **Online payments:** Conveniently pay your utility and tax bills online.
- **E-billing:** Sign up for e-billing to get notified when your utility bill and property tax notice are available.
- **System access:** Create a profile to access the system.
- **Account access:** Add your utility and property tax accounts to your MyProperty profile after setting up your profile.



For more information and step-by-step instructions, visit www.countygp.ab.ca/myproperty



Here's a TIPP! Sign Up for Our Tax Installment Payment Plan

Tired of juggling your property tax payments? Join our Tax Installment Payment Plan (TIPP) and spread your payments over the year—no more big lump sums! To get started, make sure your account is fully paid and submit your application along with a void cheque or direct deposit sheet. Find the application at www.countygp.ab.ca/payments.

Need to opt out? Just call our tax team at 780-532-9722.

Update your Mailing Address Today!



Have you recently moved? Don't risk missing out on important information from the County of Grande Prairie—update your mailing address today. Fill out the change of mailing address request form found at www.countygp.ab.ca/AddressChange.

Please note that changing your mailing address with the County does not update your information with Alberta Land Titles. To do that, contact them at 780-427-2742 or visit www.servicealberta.ca, search for "land titles," choose "Land titles - Overview" from the search results, and then select "Land Titles and Surveys Forms" from the page menu to find the change of address form.

Property Re-Inspections Begin March 1

As part of their standard five-year cycle, County Assessors will be conducting property re-inspections in a section of the County beginning March 1 until approximately July 1. Properties are assessed to determine their estimated market value, which is then used to calculate property taxes.

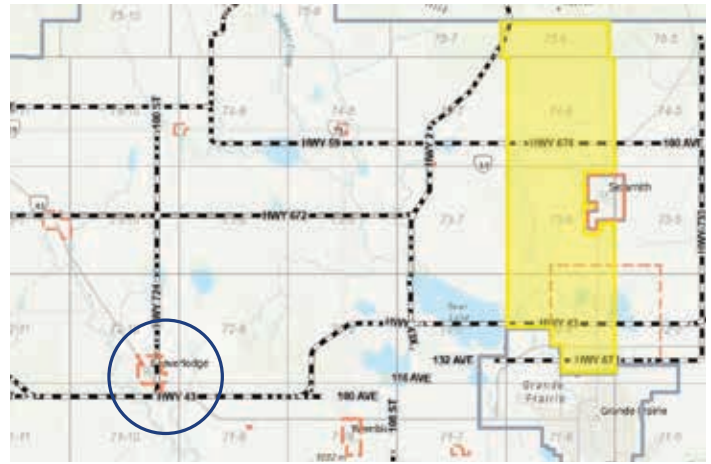
Which Properties Will Be Re-Inspected?

In this cycle, County Assessors will be focusing on Township/Range Roads 72-6, 73-6, 74-6, 75-6 as indicated on the map. Residents with properties due for re-inspection in these areas will receive a letter and Request for Information (RFI) in January asking them to self-report any changes to their property. Residents of the Town of Beaverlodge will also receive RFI letters in the summer of 2025, for upcoming inspections that will occur in the spring of 2027.

How Can I Self-Report Changes to My Property?

Choose one of the following options:

- Complete the online form. Your letter will include a link to the online form.
- Complete and then mail the questionnaire to the Assessment department.
- Email or call in your responses to the Assessment department.



Township/Range Roads 72-6, 73-6, 74-6, 75-6 and the Town of Beaverlodge

When Will Assessors Be in My Area?

Assessors only conduct re-inspections during regular business hours. If an Assessor needs to speak with you, they will knock on your front door. They will leave a call-back card if needed if you are not at home.

How Will I Recognize the Assessor?

Staff will be wearing a County ID badge and driving a County vehicle. They may take exterior photos of your property and ask you some questions to verify information already on file.

Questions?

Contact the Assessment department at 780-513-3952 or visit www.countygp.ab.ca/assessment for more information.



What Does Economic Development Do?

Our Economic Development team is dedicated to strengthening our local economy and this includes supporting existing businesses and attracting new investments to the County. We work closely with local entrepreneurs, startups, and established businesses to foster innovation, helping them adapt to new technologies and access research and development resources.

1. Navigating government regulation

- The process can be complex, so our team provides guidance on permits, zoning, and program applications to make the process smoother.

2. Securing capital

- We help businesses explore financing options, including grants and funding opportunities. We also connect businesses with available land and buildings that fit their needs, ensuring room for expansion.

3. Workforce development

- We support businesses in finding and training the skilled employees they need to thrive.

4. Product management and exporting

- We support businesses in managing their products and expanding into new markets. By connecting them with key services and resources, we help build partnerships that drive business growth.

From startups to established businesses, our team is here to help our local economy grow and prosper. Together, we're building a stronger future for our County. For more information please visit www.middleofeverywhere.ca

Seasonal Agriculture Reminders for a Successful Year

Farm Family Nominations: Nominations for outstanding farm families are open until December 15, 2024. The annual Farm Family Banquet will be held at Clarkson Hall, Evergreen Park on Friday March 7, 2025.

No Spray Deadline: If you wish to control the regulated weeds in ditches adjacent to your property, consider filling out a No Spray application. Applications will be available on our website on January 1, 2025. Deadline is April 15, 2025.

Register Your Rented Land: If you rent land for agricultural production and wish to be contacted first for any regulated weed concerns, fill out an application online, or contact our office and we can assist you.

Register Your Weed Management Plan: Producers may register their annual weed management plans online or by calling our office. This informs our weed inspectors that there is a plan in place, and they do not need to contact you if they see regulated weeds.

Upcoming Workshops: Workshops on farm safety and other topics will be announced early in 2025. Stay updated on our website for more details.

Online registration for both registry programs for 2025 will be available January 2, or you can call our office to register: 780-532-9727.

Visit www.countygp.ab.ca/agriculture for more information.



Register Today: Livestock Emergency Response Plan

The County of Grande Prairie developed a Livestock Emergency Response Plan (LERP) to meet the needs of residents in the event of a disaster, such as wildfires, floods, motor vehicle incidents, and more. This plan adds to the existing Emergency Preparedness plan with a focus on domestic livestock. It is used as a resource to make informed decisions and reduce danger and risk, to both people and their animals.

We encourage you to register your animals and equipment to help the County respond in the event of an emergency. We use this information to help us better understand the available resources needed in the event of an evacuation. The County will ONLY use this information to assist those affected in an emergency.

Register your livestock through the LERP at www.countygp.ab.ca/LERP or by calling the Agriculture department at 780-532-9727.

Grow Your Green Space with the County's Shelterbelt Program

Starting December 3, 2024, the County of Grande Prairie's 2025 Shelterbelt Program is accepting orders! County residents can order online to select from a variety of species, including white spruce, lodgepole pine, Siberian larch, hybrid poplar, willow, Saskatoon, and many more.

Things to Note:

- This program is run on a cost-recovery basis, meaning County residents can access seedlings at an affordable price.
- The order form will be available until the species are sold out. Seedlings are expected to arrive in spring 2025.
- Although the County works closely with nurseries to determine species availability, issues like disease or poor weather may impact supplies. The County will do its best to fulfill all orders, and residents will only be charged for the seedlings they receive.
- The County does not offer reimbursement or warranty on species that do not survive after being planted.

Placing Your Order

Access the order form at www.countygp.ab.ca/shelterbeltprogram and learn more about the available species, planting, and maintenance tips, and more.



Plan Your County

The County is updating the plans and policies that shape development in our municipality. To grow in a way that meets the needs of our community, we are asking residents to help Plan Your County.

What is Plan Your County?

Plan Your County is the overarching project of updating our documents starting from the high-level vision for growth and development and working our way down to specific standards. The process started with the initiation of the now-completed Hamlet Resiliency Strategy and an update to our Municipal Development Plan. In the following stages, the County will be updating the Land Use Bylaw and Area Structure Plans.

To find project documents and get the latest news, visit www.countygp.ab.ca/PlanYourCounty.

Completed Project: Hamlet Resiliency Strategy

The County has completed the Hamlet Resiliency Strategy for its nine rural hamlets and will begin implementing some of the recommended actions. The plan's purpose is to assess how the County will support the long-term needs of these hamlets in land use planning, infrastructure, and other amenities.

Completed Project: Intermunicipal Development Plans

This fall, the County completed an Intermunicipal Development Plan (IDP) update with the City of Grande Prairie. County and City residents were invited to provide their feedback on the IDP, which establishes the long-term land use vision for area around the City, as well as processes such as how the municipalities will consult with each other on development concepts.

Ongoing Project: Municipal Development Plan Update

The Municipal Development Plan establishes a high-level vision for how the County will grow in the long term. It includes policies around where different types of development will be directed, our requirements for new development, and how we preserve natural areas and better agricultural land, among other policies.

County staff have completed two phases of public consultation and are working on a draft update to the plan. The next round of public consultation will take place in early 2025, when the County will be seeking feedback on the draft.



Permits for Winter Building

During cooler temperatures, most construction sites require both temporary and permanent gas permits.

- Temporary gas permits are required when gas or propane is tied into a non-permanent heat source that will be disconnected once the project is complete.
- Temporary propane heat has more regulations than temporary gas heat. Pick up a quick reference guide at the County Administration Building front desk at 10001 - 84 Avenue, Clairmont.
- Separate permits for Building, Electrical, Plumbing and Private Sewage Systems may also be required.

Learn more at www.countygp.ab.ca/permits or contact Planning & Development staff at 780-513-3950 or email plan@countygp.ab.ca.

County Libraries Supporting Seniors

The Senior Social Hour at our County libraries offers an inviting atmosphere for residents to come together for coffee, crafts, or card games. Join us weekly at the following locations:

- Elmworth – Saturdays from noon to 3 p.m.
- Hythe – Thursdays from 1 p.m. to 3 p.m.
- La Glace – Saturdays from 10 a.m. to 1 p.m.
- Valhalla – Mondays from 1 p.m. to 3 p.m.

Our libraries provide the tools you need if you're experiencing eyesight issues, physical limitations, or have difficulty learning. Reading resources can be ordered in the following formats:

- Large print books
- Audiobooks (CD, Daisy the digital talking book, or virtual)
- Braille
- E-text
- Described video

Library staff can also bring books and other loanable items to your home through our convenient home delivery services. Call your local library to make arrangements.

Do you want to know more about County libraries? Visit us in person or find us online at www.countygplibraries.ca.

Winter Activities for Communities



Stay Active and Social with Free Seniors Walk & Talk

The Seniors Walk and Talk program operates from October through May. If you're aged 60+, come out and enjoy aerobic exercise, coffee, and connection with friends in a safe, ice-free setting throughout the colder months.

LOCATIONS:

Hythe Community Centre

Thursdays | 10 a.m. to noon
October 10 to May 8

County Sportsplex Traveland RV Track

Thursdays | 8:30 a.m. to 11:30 a.m.
October 10 to May 8

Bezanson Community Event Centre Gymnasium

New day: Wednesdays | 10 a.m. to noon
October 9 to May 7

Free entry. Find info and updates at www.countygp.ab.ca/SeniorsWalkandTalk or call 780-532-9727.

Hythe and Area FCSS Office Community Programming

Board Game Buddies in partnership with the Hythe Community Library

Open to ages 9 to 12
Thursday, March 6 | 12:30 p.m. to 3 p.m.
during Teachers Convention
Hythe & Area FCSS Office

Mega Awesome Spring Fling Cost: \$10

Open to ages 10 to 13
April 2 | 10 a.m. to 3 p.m.
Hythe Regional School

Visit www.countygp.ab.ca/hythe for information on the above Hythe Community Programs or call 780-933-7212.

Wellington Resource Centre (WRC) Community Programming

Babysitter Basics – Cost: \$40

Open to ages 11 to 15
Friday, November 8 | 9 a.m. to 4 p.m.
La Glace Community Library
Call 780-568-4696 to register.

Babysitter Basics – Cost: \$40

Open to ages 11 to 15
Friday, November 29 | 9 a.m. to 4 p.m.
Clairmont Community School

Home Alone – Cost: \$10

Open to ages 9 to 11
Friday, February 28 | 10 a.m. to 3 p.m.
Bezanson Community Event Centre

Free Youth Drop-in

Open to ages 10 to 15
Every second Thursday of the month
Wellington Resource Centre
Call 780-402-1579 to register.

Clairmont Community Kitchen

Meal and baking workshops
Clairmont Community School
To be held before the end of 2024.
Watch our website for more info.

Mega Awesome New Year Adventure Camp – Cost: \$10

Open to ages 10 to 13
Monday, December 30 | 9:30 a.m. to 4 p.m.
Clairmont Community School

Mega Awesome Spring Fling – Cost: \$10

Open to ages 10 to 13
Tuesday, April 1 | 10 a.m. to 3 p.m.
Clairmont Community School

Sexsmith and Area Foodbank

Clairmont location
Wednesdays | noon to 2 p.m.
Call for an appointment.

Visit www.countygp.ab.ca/wrc for information on the above Wellington Resource Centre Community programs or call 780-567-2843.

Family Day Unplugged Challenge

Participate in a virtual photo challenge, February 15-17. Open to all County residents. More details coming soon at www.countygp.ab.ca/communityprograms.

Free Tax Help Available

If you need tax help this coming season, free assistance may be available at a community volunteer income tax clinic near you. If you're a student, senior, single parent, or family with a modest income and straightforward taxes, you could qualify for support.

Filing your taxes ensures you receive any benefits and credits you're eligible for, such as the GST credit, Child Benefit, Guaranteed Income Supplement, and Alberta Senior Benefit.

WHEN:

The 2024 tax season begins March 2025.
Some locations offer year-round tax clinics

WHERE:

Wellington Resource Centre

10407 - 97 Street, Clairmont
Year-round. Call 780-567-2843 to book an appointment.

Hythe and surrounding area

Hythe Community Centre
10108-104 Avenue
Call 780-356-2778 to book an appointment.

Beaverlodge and surrounding area

Town of Beaverlodge FCSS
400 - 10 Street, Beaverlodge
Year-round. Call 780-354-4057 to book an appointment.

Sexsmith

Town of Sexsmith FCSS
9927 - 100 Street, Sexsmith
Year-round. Call 780-568-4345 to book an appointment or email fcss@sexsmith.ca.
Drop-off option is available.

City of Grande Prairie

- Seniors Outreach: For seniors only.
Call 780-539-6255 to book an appointment
- Grande Prairie Family Education Society:
Year-round. Available to anyone with a modest income. Call 780-830-0920 or email hubcoordinator@gpfes.com.
- Grande Prairie Friendship Centre: General public/ all persons. Third Tuesday of each month from 1 p.m. to 3 p.m. Call 587-202-6654 for an appointment

For more information or to find the tax clinic close to you visit: www.canada.ca/en/revenue-agency.html



Nominate a Volunteer!

National Volunteer Week:

April 27 – May 4, 2025

National Volunteer Week is April 27 to May 4, 2025, a time to honour the invaluable contributions of volunteers across Canada, including those in our community.

This marks the third year of the County's 'It Takes a Volunteer' program which highlights the tremendous work being done by individuals and organizations making a real difference in our community. We look forward to celebrating more amazing stories.

Do you know someone who goes above and beyond as a volunteer? Nominations for the County's 'It Takes a Volunteer' program reopen on February 1. To look at previous year's nominees and to nominate a volunteer for 2025, visit www.countygp.ab.ca/volunteers.

Nominations Now Open for Passionate Heart Awards

The Family and Community Support Services (FCSS) teams at the City of Grande Prairie, County of Grande Prairie, and towns of Beaverlodge, Sexsmith, and Wembley are once again looking to honour deserving locals and groups in the social services sector at the annual Passionate Heart Awards.

Nominations are welcome for people and organizations who contribute significantly to their community, enhance social services in the region, and are dedicated to improving quality of life.

Find nomination forms and details at www.cityofgp.com/passionateheart or www.countygp.ab.ca/passionateheart.

The deadline for nominations is January 17, 2025.



County Office Holiday Hours

County Offices will be closed to the public from 1:00 p.m. on Tuesday, December 24, 2024, to Wednesday, January 1, 2025, inclusive.

All essential services will be maintained during office closures. Online services can be accessed at any time at www.countygp.ab.ca.

Regular office hours will resume on Thursday, January 2, 2025. Questions? Please call 780-532-9722.

Recycling Corner: Extended Producer Responsibility Coming to the County in 2025



County of Grande Prairie residents will no longer be responsible for the cost of recycling when the new Extended Producer Responsibility (EPR) program launches in early 2025.

Announced by the Government of Alberta in October of 2022, the EPR program will shift the financial burden of recycling materials, including single use products, packaging, paper products, and hazardous and special products, from municipalities and residents to the producers and manufacturers that supply those products.

What does this mean for County residents?

Residents who currently pay a recycling fee will have this charge removed from their utility bill when the program is launched.

Residents who use community collection bins will not see a direct financial benefit; however, the County will no longer have to pay for having recycling as part of our waste management program, which will reduce our costs.

When is EPR being implemented?

The transition is scheduled to be completed by April 2025.

Will the recycling program change once EPR is implemented?

We're working with the Alberta Recycling Management Authority (ARMA), the government-appointed oversight body, to transition to this new framework, and to maintain the current level of recycling services for residents.

Where can I learn more about EPR?

Visit www.albertarecycling.ca/epr-oversight for more information on the EPR process.

The County will provide more details as they are finalized, and information will be available online at www.countygp.ab.ca/recycling.

Recycling and Waste Management Facilities: Regular and Holiday Hours

Clairmont Centre For Recycling and Waste Management

REGULAR HOURS: Monday to Saturday from 8 a.m. to 6 p.m.

CLOSING EARLY: November 27 at noon, November 30 at 3 p.m., December 24 at 4 p.m., and December 31 at 4 p.m.

CLOSED: December 25-26, January 1, and February 17

Demmitt Transfer Station

REGULAR HOURS: Tuesday and Sunday from 10 a.m. to 6 p.m.

CLOSING EARLY: December 24 at 4 p.m. and December 31 at 4 p.m.

CLOSED: December 26

Elmworth Transfer Station

REGULAR HOURS: Wednesday and Saturday from 10 a.m. to 6 p.m.

CLOSING EARLY: November 30 at 3 p.m.

CLOSED: November 27, December 25, and January 1

Teepee Creek Transfer Station

REGULAR HOURS: Tuesday and Thursday from noon to 6 p.m., and Saturday from 10 a.m. to 6 p.m.

CLOSING EARLY: November 30 at 3 p.m., December 24 at 4 p.m. and December 31 at 4 p.m.

CLOSED: December 26

Regular hours of operation will resume January 2, 2025.

West Grande Prairie Regional Landfill

REGULAR HOURS: Tuesday to Saturday from 10 a.m. to 6 p.m. including January 1.

CLOSING EARLY: December 24 at 4 p.m.

CLOSED: December 25

Regular hours of operation will resume December 26, 2024.

Visit www.countygp.ab.ca/recyclingprograms to learn more about the County's recycling and waste management facilities and various recycling programs. For landfill and transfer station information, please call our Landfill Information Line at 780-513-3967.



Christmas Tree Disposal for Curbside Recycle and Waste Collection Customers

As offered in past years, residents who receive curbside recycle and waste pickup services and are billed through an Aquatera utility bill will be able to dispose of their Christmas trees until January 10, 2025. It's simple: place your tree(s) one metre from your waste cart on your regular collection day.

Prior to Christmas tree collection:

- Only live trees are accepted – not artificial trees (pre-lit artificial trees can be recycled in the e-waste program)
- Ensure all decorations, tinsel, and lights are removed
- Cut your tree down to lengths of four feet or less to fit in collection trucks
- Place no more than two trees per household

County residents without curbside waste and recycle collection services, or with artificial trees to dispose of, can bring their trees to the Clairmont Centre for Recycling and Waste Management free-of-charge by showing their Clairmont Centre Waste Card. Don't have a Waste Card? Find out how to get one at www.countygp.ab.ca/wastecard



Watch Our Recycling Videos

Ever wondered what goes into your blue bag? Or where to locate recycling bins and transfer stations across our County? Let's go on a journey to discover the heart of recycling in the County of Grande Prairie. Scan the QR code to watch our videos or visit www.countygp.ab.ca/curbsidecollection.



Sleigh ride during Frostival 2023

Stay Active Outside this Winter

Explore Hommy Park this Winter!

Located at Albright and named after the Hommy family who settled in the area in 1916, Hommy Park day use area is open for all-day access during the winter months. Additionally, our brand-new playground is now open, providing a fantastic space for families to enjoy. Weekend day-use from is available 8:30 a.m. to 4:30 p.m. from October 16 to May 14, so come explore!

Winter Activities

The County of Grande Prairie offers numerous opportunities to stay active and spend quality time with family and friends. Bundle up and head outdoors to explore the diverse natural landscapes and available activities. Find County recreation info at www.countygp.ab.ca/recreationprograms.

Snowshoeing on the Pipestone Creek Trails

Experience over seven kilometres of natural trails ideal for snowshoeing. Our user-friendly trail map, available online at www.countygp.ab.ca/trails, highlights routes that range

from easy to difficult, catering to all fitness levels. Don't own snowshoes? Find rental information and reservation details at www.countygp.ab.ca/SnowShoeRentals. The trails are open for weekend day use from 8:30 a.m. to 4:30 p.m.

While the Pipestone trails can accommodate winter hiking depending on snowfall, they are not designed for cross-country skiing. Nordic skiing enthusiasts can break new trails in the loops of the Pipestone Creek campground road or in the expansive central greenspace.

Winter Family Frostival

Get ready for the coolest family event of 2025! The County of Grande Prairie is thrilled to bring back the Winter Family Frostival on Sunday March 2, 2025, at Pipestone Creek Campground. Enjoy a day of activities including bonfires, sleigh rides, tobogganing, snow sculpting, and painting, with refreshments available. Watch our website for updated information: www.countygp.ab.ca/frostival.

Community Groups Corner



Resources For Community Groups

Looking for information? Visit the Community Groups webpage for funding resources, including links to toolkits, a crowdfunding platform, a Learning Centre for board members and volunteers, service providers, and funding search engines.

Stay Informed

Subscribe to our monthly Community Groups newsletter for up-to-date information delivered straight to your inbox on topics such as the location of our roving office, County and community hosted training opportunities, suggestions for timely funding sources, and more.

Visit our website at www.countygp.ab.ca/communitygroups or scan the QR code.

Beware of Scams: What is Vishing?

Vishing is “voice phishing” a phishing technique that uses voice communication technology. Cyber criminals (vishers), use fraudulent phone numbers, fake caller ID, and voice altering software to trick people into sharing their sensitive information over the phone. Some common types of vishing range from credential and government impersonation, to telemarketing scams. Here are some tips to avoid vishing scams:

- Listen for poor audio quality.
- Watch out for calls from unknown numbers or automated calls.
- Be suspicious of callers that request sensitive information.
- Be aware of scare tactics.
- Never share your personal information in a received call.
- Don't use your phone's callback function. Instead seek out the caller's contact information through legitimate sources like your contacts in your phone.

For more information on vishing and how to protect yourself, visit www.getcybersafe.gc.ca/en/blogs/what-vishing



Be Facebook Aware this Holiday Season

Keep yourself safe on Facebook this holiday season! Be aware of fake contests and giveaways and remember that the County will never ask you for your credit card number or any personal information via Facebook. Scammers will always make their accounts look convincing by preying on individuals through private messages. Be mindful, alert, and most importantly let us know as soon as possible. If you have concerns or questions about posts from Facebook that appear to be from the County, please reach out to us by email at communications@countygp.ab.ca or call 780-532-9722.



County Sportsplex – Come Play!

The County Sportsplex has a program for everyone!

780-830-7407 | info@cgpsportsplex.com | www.cgpsportsplex.com

TENDER TOTS

Come play in the Trican Fieldhouse from 9 a.m. to noon on Fridays. Walk the track or socialize with friends and/or other parents while your child plays with our variety of toys and balls on the indoor turf field.

SPRING BREAK CAMP MARCH 31 - APRIL 4, 2025

Kids aged 5 to 12 are invited for a week of fun-filled activities. Experience games, crafts, recreational sports, and skating on our indoor ice rink. Our camp is designed to spark the imagination, confidence, independence, and communication skills of all our campers. Watch our website for more information and upcoming registration:
www.cgpsportsplex.com.

OTHER PROGRAMS OFFERED AT THE COUNTY SPORTSPLEX:

- Active Tots - Montessori Sports Academy for 3- to 5-year-olds
- Be Yoga Fly - Aerial Yoga for all ages

For more information, call the County Sportsplex at 780-830-7407.



LEARN TO SKATE

Preschool Skate (ages 3 to 5) and Learn to Skate (ages 6 to 12) programs are offered in blocks of six weeks per session, from October to May annually. Skaters receive two lessons per week on Mondays and Wednesdays or Tuesdays and Thursdays. Our instructor has more than 36 years of experience with both beginner skaters and those looking to improve their skating skills. Register online: www.cgpsportsplex.com.



BOOK YOUR NEXT PARTY OR EVENT AT THE SPORTSPLEX!

The County Sportsplex is the place to be for your next party or event. You can book the ice rink or fieldhouse with the option of adding the bouncy castles. Leave the catering to either Quick Meal or the Bulldogs Sports Lounge. Contact us at 780-830-7407 or email info@cgpsportsplex.com for more information about party costs, packages, and to secure your booking.



PHILIP J. CURRIE DINOSAUR MUSEUM

WINTER PROGRAMMING



SHOP WITH US

Surprise your friends and family this holiday season with a unique gift from our online store or an unforgettable experience with our palaeo team! Purchase gift cards now for our Summer 2025 rafting and bonebed programs to lock in 2024 pricing.



BOOK YOUR CLASS TODAY

We offer museum field trips, in-class visits, and Night at the Museum sleepovers for school-aged children. Book now to experience our K-12 school programs, featuring curriculum connections in paleontology, evolution, earth sciences, social studies, and paleoart.

THE BIGGEST FIND OF THE SEASON!

Meet "Big Sam"—one of the largest *Pachyrhinosaurus lakustai* skulls ever discovered! Weighing in at 1,000 pounds and measuring a metre in length, our dedicated palaeo team has spent the entire season meticulously excavating this impressive specimen. See Big Sam up close in our lab and follow us on social media for exclusive behind-the-scenes content!

APRIL ARCHOSAUR ABSURDITY IS BACK

Join us this April for our free and interactive online tournament! Follow along as another epic lineup of archosaurs battle it out for the title of AAA2025 champion. Don't miss our palaeontologist-curated Creature Guide, AAA interviews, lesson plans, and more. Who will reign supreme this year?

WINTER/SPRING PROGRAMMING

Our Winter and Spring programming is in full swing! Spend a Night at the Museum, erupt a volcano in PD Camps, sing along at Nesting Grounds, or dive into hands-on learning during Homeschool Days. Secure your spot by booking through our website today.

UPCOMING MUSEUM EVENTS

Mark your calendars for our upcoming events: Noon Year's Eve Balloon Drop on December 31, Easter Egg Hunt on April 19, and International Museum Day on May 18.

WHAT TO DO IF YOU FIND A FOSSIL

- 1. Leave It Where It Is** – fossil excavation requires a permit in Canada.
- 2. Record the Location** – take pictures of the fossil and nearby landmarks to re-locate the spot.
- 3. Contact a Palaeontologist** – send your pictures to curator@dinomuseum.ca so the fossil can be identified and collected safely. It might be the next big find of the region!

RETURN UNDELIVERABLE ITEMS TO
THE COUNTY OF GRANDE PRAIRIE NO.1
10001 - 84 AVENUE
CLAIRMONT, AB T8X 5B2



County Contact Information

EMAIL:

info@countygyp.ab.ca

ADDRESS:

10001 - 84 Avenue, Clairmont, AB T8X 5B2

WEBSITE:

www.countygyp.ab.ca

OFFICE HOURS:

8:30 a.m. to 4:30 p.m., including over the lunch hour. Closed on statutory holidays.

COUNTY ADMINISTRATION BUILDINGS

Administration, Assessment, Asset Management, Corporate Services and Strategy, Economic Development, Financial and Business Planning Services, Information Technology, Insurance/Risk Management, Legislative Services, Procurement, Communications and Marketing, People and Organizational Development, Transportation and Utilities, Planning and Development Services

780-532-9722

COMMUNITY SERVICES BUILDINGS

Agriculture, Family and Community Support Services, Regional Enforcement Services, Regional Fire Service, Recreation and Culture

780-532-9727

 Watch us on YouTube

 Like us on Facebook



LEFT TO RIGHT: Councillor Brian Peterson, Councillor Karen Rosvold, Councillor Bob Chrenek, Reeve Bob Marshall, Deputy Reeve Amanda Frayn, Councillor Leanne Beaupre, Councillor Kurt Balderston, Councillor Steve Zimmerman, Councillor Peter Harris

Councillor Contact Information

Deputy Reeve Amanda Frayn

Division 1
780-518-3197
afrayn@countygyp.ab.ca

Councillor Kurt Balderston

Division 2
780-814-8404
kbalderston@countygyp.ab.ca

Councillor Leanne Beaupre

Division 3
780-814-3121
lbeaupre@countygyp.ab.ca

Councillor Steve Zimmerman

Division 4
780-831-0864
szimmerman@countygyp.ab.ca

Reeve Bob Marshall

Division 5
780-933-2053
bmarshall@countygyp.ab.ca

Councillor Peter Harris

Division 6
780-933-3074
pharris@countygyp.ab.ca

Councillor Brian Peterson

Division 7
780-228-0034
bpeterson@countygyp.ab.ca

Councillor Karen Rosvold

Division 8
780-831-0902
krosvold@countygyp.ab.ca

Councillor Bob Chrenek

Division 9
780-897-3577
bchrenek@countygyp.ab.ca

Senior Administration

Joulia Whittleton, County Manager
780-933-8712 | jwhittleton@countygyp.ab.ca

Nick Lapp, General Manager
Planning and Development Services
780-532-9722 | nlapp@countygyp.ab.ca

Ryan Konowalyk, General Manager
Transportation and Utilities
780-532-9722 | rkonowalyk@countygyp.ab.ca

Carol Gabriel, General Manager
Corporate Services and Strategy
780-532-9722 | cgabriel@countygyp.ab.ca

Rob Beaupertuis, General Manager
Financial and Business Planning Services
780-532-9722 | rbeaupertuis@countygyp.ab.ca

Charlotte Bierman, General Manager
People and Organizational Development
780-532-9722 | cbierman@countygyp.ab.ca

Lee Brachmann, General Manager
Community Services
780-532-9727 | lbrachmann@countygyp.ab.ca