

BY-LAW NO. 2933  
OF THE  
COUNTY OF GRANDE PRAIRIE NO. 1

A by-law of the County of Grande Prairie No. 1, in the Province of Alberta, for the purpose of removing an Environmental Reserve (ER) dedication from a portion of land, in accordance with Section 22 of the Municipal Government Act, Chapter M-26 R.S.A., 2000, and amendments thereto.

**WHEREAS** the lands hereafter described are no longer required to be dedicated, and

**WHEREAS** application has been made to the County of Grande Prairie No. 1 to have the Environmental Reserve dedication removed on behalf of her Majesty the Queen as represented by Alberta Transportation, and

**WHEREAS** Notice of Intention of the Council to pass a by-law has been published once a week for 2 consecutive weeks, in a newspaper circulating in the area to which the proposed bylaw relates, the last of such publications being at least five days before the day fixed for the passing of the by-law, and

**WHEREAS** Notice of Intention of the Council to pass a by-law has been mailed or delivered to every residence in the area to which the proposed bylaw relates, and

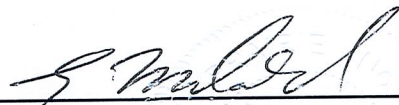
**WHEREAS** a Public Hearing has been held to hear comments from any person wishing to be heard who may be prejudicially affected by the by-law.

**NOW THEREFORE BE IT RESOLVED** that the Council of the County of Grande Prairie No. 1 does hereby remove the Environmental Reserve (ER) dedication of the following described lands, subject to right of access granted by other legislation or regulations:

PART OF NW 25-71-7-W6M as specifically stated in the attached Schedule "A"  
forming part of this bylaw.

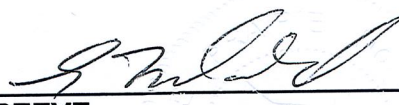
**EXCEPTING THEREOUT ALL MINES AND MINERALS**

READ A FIRST TIME THIS 5<sup>th</sup> DAY OF DECEMBER, A.D. 2011.

  
\_\_\_\_\_  
REEVE

  
\_\_\_\_\_  
COUNTY ADMINISTRATOR

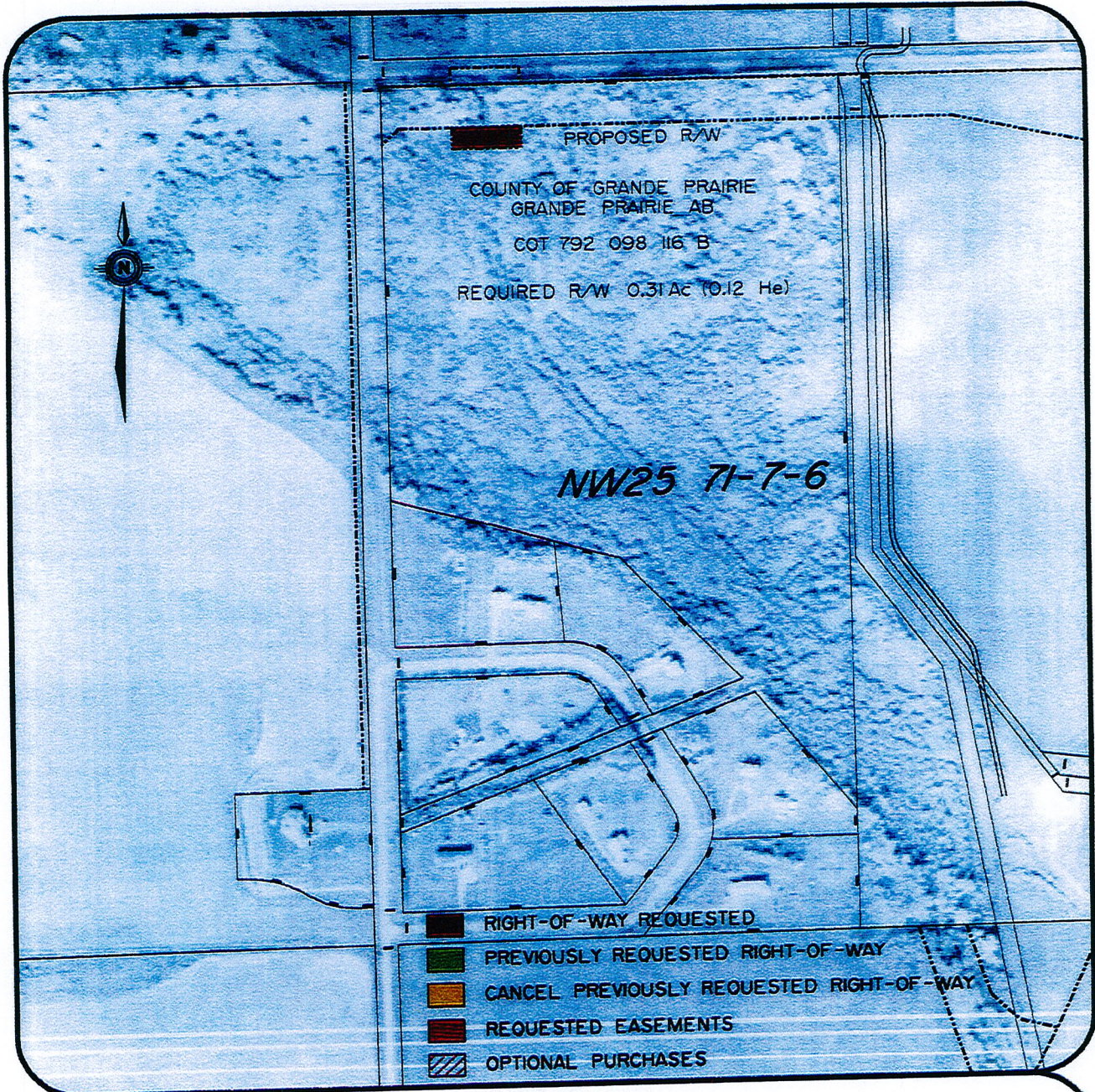
READ A SECOND AND THIRD TIME AND FINALLY PASSED THIS 5<sup>th</sup> DAY OF  
DECEMBER, A.D. 2011.

  
\_\_\_\_\_  
REEVE

  
\_\_\_\_\_  
COUNTY ADMINISTRATOR



SCHEDULE "A" TO BYLAW 2933



Appendix "B"

Agreement with  
County of Grande Prairie  
Grande Prairie, AB.  
for Highway 43X:03  
in NW25 71-7-6

containing 0.31Acres (0.12 Ha) more or less

**AECOM**

**Alberta**  
Transportation

Landowners Signature \_\_\_\_\_