

**BY-LAW NO. 2913**  
**COUNTY OF GRANDE PRAIRIE NO. 1**

A by-law of the County of Grande Prairie No. 1, in the Province of Alberta, to provide a different bylaw reference number for one of the bylaws drafted as 2680-10-080 being the reference number assigned to redesignate two separate and distinct parcels of land within the boundaries of the County of Grande Prairie and in accordance with the provisions of the County of Grande Prairie Land Use Bylaw 2680.

**WHEREAS** the *Municipal Government Act* contains provisions that authorize a Council to revise municipal bylaws in order to correct clerical, grammatical and typographical errors;

**AND WHEREAS** Bylaw Number 2680-10-080 was presented and approved for the redesignation of lands within the County of Grande Prairie namely:

Pt. NW 15-72-5-W6M

**AND WHEREAS** Bylaw Number 2680-10-080 was also presented and approved for the redesignation of lands within the County of Grande Prairie namely:

Pt. NE 14-74-4-W6M

**NOW THEREFORE, PURSUANT** to the authority conferred upon it by the *Municipal Government Act*, the Council of the County of Grande Prairie No. 1, hereby enacts as follows:

**FIRSTLY:** That Bylaw 2680-10-080 shall continue to be referenced to redesignate **Pt. NW 15-72-5-W6M**;

**SECONDLY:** That Bylaw 2680-10-081 shall be assigned to the Bylaw referenced to redesignate **Pt. NE 14-74-4-W6M**.

This Bylaw shall come into full force and effect upon third and final reading thereof.

**READ A FIRST, SECOND AND BY UNANIMOUS CONSENT, A THIRD AND FINAL TIME**

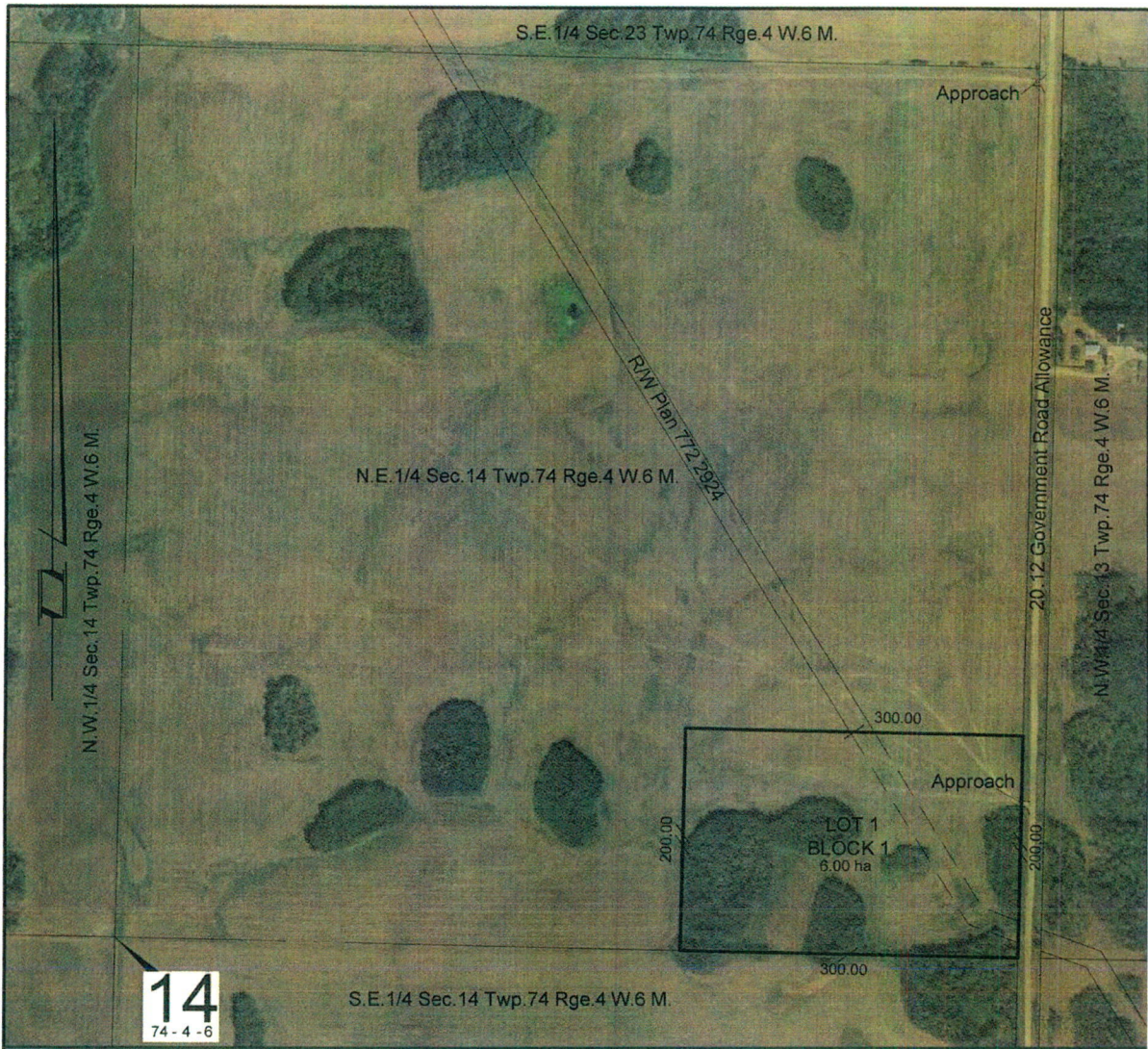
THIS 24<sup>th</sup> DAY OF JANUARY, A.D. 2011.

  
REEVE

ACTING.   
COUNTY ADMINISTRATOR



SCHEDULE "A"  
BYLAW 2680-10-081



DON HOLLINGWORTH

<p>Note:</p> <ol style="list-style-type: none"><li>1. All dimensions are in meters and decimal thereof.</li><li>2. Boundaries to be confirmed by a legal survey.</li><li>3. Information compiled from aerial photography and information from client.</li><li>4. Area to be subdivided shown thus  and contains 6.00 ha.</li><li>5. Land is zoned CR-5.</li><li>6. There are no Sour Gas facilities within 1.5km of site.</li><li>7. There are no highways within 0.8km of site.</li><li>8. Parallel lines designated thus:  and thus: </li></ol>	<p>Sketch Plan Showing Proposed <b>SUBDIVISION</b> of part of N.E. 1/4 Sec. 14 Twp. 74 Rge. 4 W.6 M.</p> <p>COUNTY OF GRANDE PRAIRIE No. 1</p>	
	Scale = 1:5000	Date: September 15, 2010
	Drawn By: JG	Checked By: CF
	Job No. 010027760	Dwg. No. 010027760-SDTN01
		Page 1 of 1



**BY-LAW NO. 2680-10-081**  
**COUNTY OF GRANDE PRAIRIE NO. 1**

A By-law of the County of Grande Prairie No. 1, in the Province of Alberta, to amend County Land Use Bylaw 2680.

**WHEREAS** the Council of the County of Grande Prairie No. 1 has adopted the County of Grande Prairie Land Use By-law No. 2680; and

**WHEREAS** the Council has the authority pursuant to the Provisions of the Municipal Government Act, Revised Statutes of Alberta, 2000, Chapter M26, to amend the said Land Use By-law. 2680.

**NOW THEREFORE** the Council of the County of Grande Prairie No. 1, duly assembled enacts as follows:

**THAT** the Land Use By-law No. 2680 be hereby amended as follows:

**THAT PART OF NE 14-74-4-W6M BE REDESIGNATED FROM AN AGRICULTURAL (AG) DISTRICT TO A COUNTRY RESIDENTIAL (CR-5) DISTRICT AS INDICATED IN RED ON THE ATTACHED SCHEDULE "A"**

This By-law comes into effect upon the date of it finally being passed.

**READ A FIRST AND SECOND TIME THIS** 4<sup>th</sup> **DAY OF** JANUARY, A.D. 2011.

  
\_\_\_\_\_  
**REEVE**

  
\_\_\_\_\_  
**ACTING COUNTY ADMINISTRATOR**

**READ A THIRD AND FINAL TIME AND FINALLY PASSED THIS** 4<sup>th</sup>  
**DAY OF** JANUARY 2011.

  
\_\_\_\_\_  
**REEVE**

  
\_\_\_\_\_  
**ACTING COUNTY ADMINISTRATOR**