

COUNTY CONNECTIONS



SPRING 2021

Election Workers Needed Pg. 2
All About the 2021 Budget Pg. 4
2021 Construction Projects Pg. 8
Flood Preparation & Mitigation Pg. 10

Wildfire Mitigation Pg. 12
Answer the Call Pg. 13
It's Fire Season Pg. 14
Contact ATCO for Power Lines Pg. 15

Weed Inspections Pg. 16
Apply for Community Grants Pg. 19
Coming up at the Clairmont Landfill Pg. 20
Youth Camps & Programs Pg. 21

Reserve your Summer Staycation Pg. 22
Explore Evergreen Ridge Pg. 24
Dino Museum Pg. 26
Crosslink County Sportsplex Pg. 27

Reeve's Message



As the days get longer, I am hearing from many of you that the warmth of the sunshine is very welcome! We are fortunate the County has an abundance of trails, parks and greenspace to safely enjoy and explore in every season.

Looking back at the past year, it has been difficult in many ways. As a community, we are persevering. Thank you to residents and businesses for your flexibility to pivot and to change your practices when required. With the vaccine rollout, we are starting to see a light at the end of the tunnel. We're not there yet. Many individuals have yet to be vaccinated. Continue to respect and support one another, stay safe and follow public health guidelines.

BUDGET 2021: SMART AND COMPASSIONATE

At our final budget deliberations in April, Council approved no tax rate increase for 2021. While the County must still collect municipal taxes to fund essential services like fire, waste management, road maintenance and water supply, we hope the hold on the tax rate will provide some relief. This is a budget that looks at the now – it prioritizes maintaining essential services and programs and supports initiatives to help decrease the burden on our residents during these challenging times. It's also forward-thinking, ensuring our investments support community sustainability and quality of life today and in the future.

Budget 2021 investment highlights include:

- About 56 per cent of the capital budget for road and bridge projects.
- \$6 million for recreation; community; culture; library; seniors and special needs transportation; and FCSS grants to

community organizations and neighbouring municipalities, as outlined in our Intermunicipal Collaboration Framework agreements.

- \$6.7 million for critical infrastructure projects. This includes environmental improvements at the Clairmont Centre for Recycling and Waste Management as well as new infrastructure to ensure safe and quality drinking water in La Glace.
- \$1.1 million for new or upgraded Regional Fire Service equipment to enhance public safety.

WELCOME HYTHE!

In March, Hythe residents voted to dissolve and become a hamlet in the County of Grande Prairie, as the Village is no longer viable and able to continue operating on its own. I extend a warm welcome to Hythe citizens. You have long been our neighbours and friends, and now you will be a part of our community.

The next step is for Provincial Cabinet to approve the dissolution with a formal Order in Council. At that time, the Village of Hythe will be officially dissolved. We do not yet know when that will occur, but are already working with Hythe Administration to ensure a smooth transition and provide high quality municipal services to our new hamlet.

Regional Collaboration

There are many ways the County works with our neighbouring municipalities. One of those ways – our Intermunicipal Collaboration Framework agreements (ICFs) – formalize how we will share resources and services, with each of those partnerships tailored to support the unique needs and priorities of each community.

The end of 2020 marked the successful completion of six of our required seven ICFs with our neighbours. Through collaborative discussions, we have now completed ICFs with Birch Hills County, Saddle Hills County, MD of Greenview, and the towns of Sexsmith, Beaverlodge and Wembley.



countygp.ab.ca

At the beginning of May, we announced that the County and City were moving forward with mandated arbitration to reach an agreement on our joint ICF. While the City and County identified areas of further collaboration over the last few months, we were not able to reach an agreement related to cost-sharing for services within the specified timeline. Our next step is to present our case to an arbitrator, alongside the City, to finalize the framework.

A Safe and Healthy Summer

Being mindful of circumstances and guidelines related to the pandemic, the County continues to create and promote safe opportunities to engage families and people of all ages this summer. Council approved waiving permit and inspection

fees for County-based restaurants and food service businesses to install an outdoor patio this summer, providing more spaces for families to enjoy. Visit our website at www.countygp.ab.ca to stay updated on safe activities for you and your family over the next few months.

As we all aim for the home stretch, continue to be mindful of others, connect with neighbours and friends, and remember to support local businesses and restaurants. I wish everyone a safe and enjoyable summer.



ELECTION WORKERS NEEDED

SUBMIT YOUR APPLICATION TODAY

The County of Grande Prairie is seeking election workers for the 2021 Municipal Election. Election workers will be responsible for ensuring polling stations open and close on time and are adequately set up with all necessary supplies. Election workers will be entrusted to provide accurate voting instructions, ensure that all voters provide satisfactory identification, ensure the secrecy of the vote and that voting stations are closed in accordance with legislative requirements and supplies are transported in accordance with all County processes.

Interested applicants must meet the following requirements:

- Canadian citizen
- At least 18 years of age
- Valid Drivers License
- Adhere to all applicable COVID-19 protocols
- Possess the ability to remain polite and courteous (demonstrate professionalism)
- County resident
- Experience dealing with the public
- Maintain confidentiality
- Previous election experience is an asset

Candidates must be willing and able to attend a training session, to be scheduled, and commit to working on Monday, October 18, 2021 from approximately 8:00 a.m. to 10:00 p.m. Compensation will be provided.

Application deadline: Wednesday, June 30, 2021



For more information and to apply, please visit our website at www.countygp.ab.ca/elections.

Complete the online application or download and drop off the completed form at the County Office located at 10001-84 Avenue, Clairmont, Alberta.

Nomination Period ends: noon on September 20, 2021 | Election Day: October 18, 2021

Connect to the County 24/7

Did you know that you can connect to many County services online at any time? From applications to payments, requests, maps and more, it's all on our new website!

Don't know if the services you need are available online? Visit www.countygp.ab.ca/services to view our list of A-Z services for quick access to the information you need.

Want to stay up to date on latest news and notices from the County? Visit www.countygp.ab.ca/subscribe to receive information updates via email directly in your inbox.



Promote your community event on our website calendar

Let us help you promote your local, non-profit community event* with our website calendar. You can submit your community event on our Events Calendar at www.countygp.ab.ca/events.

It's free and simple to set up an account where you'll be able to submit, edit and update your community events. Your event will be published on our website at www.countygp.ab.ca and emailed in a weekly digest to people who've subscribed to our calendar.

It's easy. Head to the Events Calendar, click on the submit event button along the top of the page and we'll walk you through the rest.

SUBMIT EVENT

Don't have an event to promote? Stop by anyway! Click on the subscribe button and you can start receiving updates about what's going on in the community.

SUBSCRIBE

It's our way of helping you get the word out across the County and supporting the great work you do in our community!

**Community events hosted by local non-profit or volunteer organizations*

Unused Internet Tower? We'll Take it Off Your Hands

Do you have an internet tower on your property that is not being used? Have you purchased property with an existing internet tower that you do not need?

If you answered yes to either of these questions, please contact the County. We will remove internet towers at no charge!

Contact the Information Systems department at **780-532-9722** or email servicedesk@countygp.ab.ca.



countygp.ab.ca

2021 Budget Approved with Zero Per Cent Tax Rate Increase

Deliberations for the 2021 budget ended with Council adopting the budget, including both capital and operating, with a zero per cent tax rate increase. The overall \$170.8 million budget includes estimated expenditures of \$82 million for general operations, \$88.8 million for capital, and \$5.8 million for debenture principle payments.

"Through the approval of this budget, Council has maintained essential services and programs while also ensuring investment in critical roads and infrastructure, proactive planning, community support, and safety programs which all, ultimately, improve our quality of life in the County of Grande Prairie," said Reeve Leanne Beaupre. "Of course, the budget also addresses the continuing challenges placed before us by the COVID-19 pandemic and the current economic climate affecting us all."

This approved zero per cent increase is in line with what Council approved during December's interim budget deliberations.

"We recognize the challenges residents and businesses continue to face and this is one step the County can take to relieve some of the financial pressure," said Beaupre. "While the County still needs to collect municipal taxes to fund essential services like fire, waste management, road maintenance, and water supply, we hope the hold on the tax rate will help households and businesses in our community financially."

SOME OF THE SERVICES, PROGRAMS AND PROJECTS COUNCIL APPROVED FOR 2021 INCLUDE:

- Approximately 56 per cent of the capital budget is dedicated to road and bridge projects.
- \$6 million in recreation, community, culture, library, seniors and special needs transportation, and Family and Community Support Services grants to various

organizations and neighbouring municipalities per the Intermunicipal Collaboration Framework agreements.

- \$6.7 million for critical infrastructure projects to support sustainable growth, including a new water treatment plant in a new community water system for La Glace, landfill cell and leachate pond for the Clairmont Centre for Recycling and Waste Management, and to update design standards for land use planning.
- \$1.1 million for the new equipment, equipment replacements and upgrades for Regional Fire Service.

Council also approved, in principle, Fiscal Plans for 2022 – 2023 and Capital Plans for 2022 – 2025.

The overall taxable assessment increased by \$284 million (an increase of 3.07 per cent over 2020).

In 2021, an average residential property valued at \$435,000 will pay a total property tax bill of \$2,872.70:

- \$1,772.63 for the municipal services portion (stays with the County of Grande Prairie)
- \$1,080.45 for provincial education (provided to the Province of Alberta)
- \$19.62 for seniors lodging (provided to the Grande Spirit Foundation)

Individual municipal tax amounts may vary based on property assessments and changes to market value.

The 2020 surplus of \$7.6 million represents less than 5 per cent of the County's total budget and results from departmental cost savings, impacts from COVID-19, including staff reductions, financial assistance from the Province (MOST Grant) and postponed projects.

Find out more about the 2021 interim operating and capital budget in the attached Budget Highlights or at www.countygp.ab.ca/budget.

Budget Highlights

CAPITAL BUDGET

Approximately \$31.8 million is being invested in capital road and bridge projects.

The proposed new construction includes 15 km of new road surfacing including the paving of gravel roads, surfaced road overlays, and re-construction road projects.

Grant funding is estimated at \$11.3 million, including an estimated \$1.3 million Federal Gas Tax grant, and an estimated \$10 million in funding from the Provincial Municipal Sustainability Initiative (MSI) grant.

THE FOLLOWING IS A LIST OF SCHEDULED ROAD PROJECTS:

- Windwood Lane Rehabilitation – Overlay 0.7 km
- Bezanson Road South/100 St – Base pave 0.34 km
- Clairmont North/107A Ave and 99 St – Overlay 0.9 km
- River Road Estates/Township Road 705A – Overlay 0.33 km
- Wynngate Phase 4 Rehabilitation/ 96 St, 96A St, 112 Ave – Paving, curb and gutter 1.4 km
- 156 Ave/Township Road 721A from 98 St to RR 55 to Bauman Road – Overlay 4.1km
- Range Road 51 from Township Road 714A to Highway 43 – Overlay 5.7 km
- Range Road 63 from Township Road 734 south to Hwy 672 – Grade and base pave 3.2 km
- Range Road 63 from Township Road 734 to Highway 59 – Grade 3.2 km
- Range Road 123 from Township Road 732 to Highway 671 – Grade 6.6 km
- Township Road 744 from Range Road 54 to Range Road 60 – Grade 3.2 km
- Range Road 53 and Township Road 714 – Intersection improvements
- Range Road 53 from Township Road 714 north – Base pave 0.6 km
- Clairmont Parkway to the current new phases of Northfield landing, north of Grande Spirit Seniors Lodge – construct new roadway and stormwater infrastructure
- \$7 million for bridge replacement and rehabilitation projects including:
 - Rio Grande Bridge replacement
 - Bear River Bridge replacement
- \$2 million to repave Highway 724 (cost-shared with the Province)
- \$2.2 million for spot construction, road widening and chip sealing projects
- \$3.33 million for the Highway 40 twinning and bridge construction (cost-shared with the Province and the MD of Greenview)

- \$395,000 for Ditch Rehabilitation Program as part of the flood prevention efforts
- \$300,000 for tree clearing from intersection sites and for intersection investigations to help mitigate safety risks
- \$70,000 for Road Condition Assessment Study

IN ADDITION TO ROAD CONSTRUCTION, THE CAPITAL BUDGET INCLUDES:

- \$7.3 million for equipment replacements
- \$4.7 million to construct a new Landfill Cell the Clairmont Centre for Recycling and Waste Management
- An additional \$390,500 to build a leachate pond for the Clairmont Centre for Recycling and Waste Management (to fund the \$1 million project)
- An additional \$250,000 for Phase 1B of the La Glace Community Water System (which will fund the \$1.4 million project with grant funding estimated at \$750,000)
- \$217,000 for Information Technology server upgrades
- \$175,000 for new equipment for Regional Fire Service
- An additional \$150,000 for a new fire training centre at the Dunes Fire Hall
- \$50,000 for Supervisory Control and Data Acquisition (SCADA) upgrades for water systems in the hamlets of Bezanson, La Glace, Teepee Creek and Valhalla to allow instant information and data transfer to the operators remotely
- \$50,000 for Public Works Office Renovations
- \$21,650 for an E-Ticketing System for Regional Enforcement Services to implement Phase 2 of Bill 21 (Provincial legislation)
- \$20,000 for Storm Drain Maintenance
- \$10,000 for a Power Correction Box for the Crosslink County Sportsplex

OPERATING BUDGET

The operating budget proposed for 2021 includes:

- \$6 million in recreation, community, culture, library, seniors and special needs transportation, and FCSS grants to various organizations, and neighbouring municipalities as per Intermunicipal Collaboration Framework agreements
- Additional \$973,000 for Evergreen Park due to COVID pandemic impacts to support operations for a total contribution of \$1.4 million
- \$150,000 to update design standards for land use planning and infrastructure
- \$40,000 for Clairmont Centre for Recycling and Waste Management scale software and Landfill Tag Program upgrades
- One Full Time Equipment Operator for Public Works to maintain existing services and/or infrastructure to ensure effective transportation networks
- \$20,000 for Philip J. Currie Dinosaur Museum maintenance

SCHEDULE OF FEES AND RATES CHANGES

Curbside waste collection service fees will increase from \$9.50 to \$9.75 bi-monthly, and for recycling collection from \$4.75 to \$5.00 bi-monthly.

Land Lease for Commercial and Industrial use has changed from market value per acre/year to \$400, and for Agricultural and Recreational use from market value \$0.60 per acre/year.

Environmental enquiries decreased from \$200 per request to \$20.

Administration fees for Subdivision and Development, and Joint Assessment Board appeals increased from \$75 to \$500.

The schedule of fees, rates and charges is available at www.countygp.ab.ca.



OF THE

MAKING SENSE 2021 BUDGET



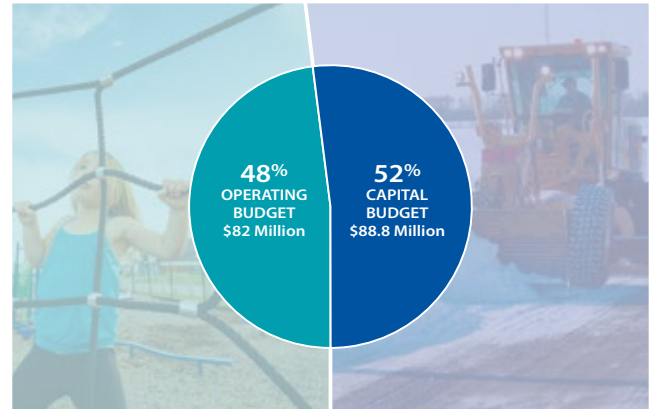
BUDGET BASICS

Every program and service in the County has an associated cost. Each year, Council makes financial decisions by distributing money for each of them in the Operating and Capital budgets.

The total expenditure for 2021 is \$170.8 million.

OPERATING BUDGET: The County's operating budget goes towards the day-to-day costs to keep everything running smoothly, including enforcement and fire services, parks and recreation facilities, road maintenance, including snow removal, and waste management.

CAPITAL BUDGET: The County's capital budget funds major assets, including machinery and equipment, vehicles, buildings, and major road construction projects.



County of Grande Prairie No. 1
10001 54 Avenue
Clairmont, AB T8X 5B2

PROPERTY ASSESSMENT AND TAX NOTICE Notice of Assessment Date: Tax Year

Please refer to the public notice on this.

Legal Description	Municipal Address	Block	Plan	Roll Number
UTR RUG TWP SEC QTR LOT				

Issued to:
A copy of this notice has been sent to the following:
Additional Owners:
Reference:

Tax Levy Summary	
Total Property Tax	\$ 2,915.89
Local Improvement	.00
Total Current Tax	\$ 2,915.89
Credits or Arrears	.00
Outstanding Balance	\$ 2,915.89

ASSESSMENT DETAILS

Assessment Class	Land	Improvement	Other	Total
RS Residential	110,110	324,890		435,000

Assessment Total: 435,000
Taxable Total: 435,000

TAX ACCOUNT DETAILS

Tax Category	Tax Rate	Municipal Taxes	School Taxes	Other Taxes	Total
RS General Municipal	4.075	1,772.63			1,772.63
RS Alta Foundation Fund	2.5838		1,123.95		1,123.95
Grande Spirit Foundation	.0444			19.31	19.31
SUB-TOTAL		1,772.63	1,123.95	19.31	2,915.89

School Support
Public: 100.00
Separate:
Undeclared:
Municipal:

Local Improvement

Description	Amount
Bylaw	\$
Expiry	\$
Bylaw	\$
Expiry	\$
Bylaw	\$
Expiry	\$

REMITTANCE PORTION

Tax Year	Owner #	Roll Number	Legal Description	Plan/Block/Lot

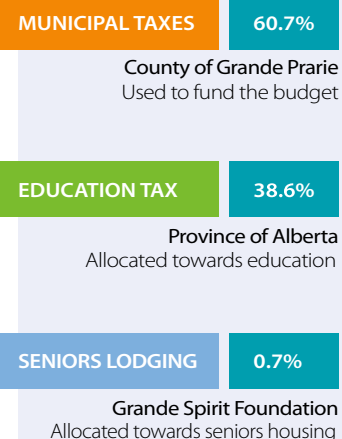
Property Assessment & Tax Notice
County of Grande Prairie No. 1
10001 54 Avenue
Clairmont, AB T8X 5B2

Amount Paid	Amount Due on or before
	JUNE 30, 2021
	\$ 2,915.89

Amount Due If Paid After	Amount Due If Paid After
JUNE 30, 2021	OCT 29, 2021
\$ 3,003.37	\$ 3,353.27

READING YOUR PROPERTY TAX NOTICE

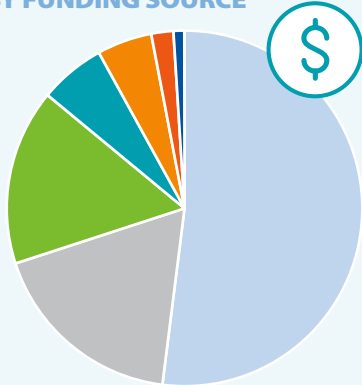
Your property tax notice includes more than municipal taxes – it also includes taxes for education and seniors lodging. The Province of Alberta and the Grande Spirit Foundation determine the financial amount required and the County is required to collect and send these funds to each of them, respectively.



WHERE THE MONEY COMES FROM

Funding for the County's programs and services comes from several sources, with most coming from property taxes.

YOUR TAX DOLLAR BY FUNDING SOURCE



52%
MUNICIPAL TAXES

18%
TRANSFER FROM
RESERVES*

16%
GRANT REVENUE

6%
USER FEES,
SALE OF GOODS
& MISC. REVENUES

5%
DEBT FUNDING

2%
RETURN ON
INVESTMENT

1%
LEVIES, FINES
& PENALTIES

*A portion of municipal taxes are put into reserve accounts, similar to savings accounts. Money is transferred out of reserves when needed for critical capital and operational projects. The advantage of putting money into reserves is that interest accrues on a large portion of the balance.

FOR MORE INFORMATION
→ countygp.ab.ca/budget



2021 SAMPLE RESIDENTIAL PROPERTY

PROPERTY VALUE	AVERAGE	\$435,000
MUNICIPAL TAXES	INCREASE	0%
EDUCATION TAX	%	38.6%
SENIORS LODGING	%	0.7%
TAX BILL	=	\$2,915.89

MUNICIPAL TAX DOLLARS AT WORK

This is how much of our sample residential property tax bill went towards County operational and capital expenses:

TRANSPORTATION NETWORK



\$882.77

- 28.6%** ROAD CONSTRUCTION & BRIDGE PROGRAM
- 12.8%** ROAD MAINTENANCE, SIGNAGE, SPOT & MISCELLANEOUS CONSTRUCTION
- 2.8%** PUBLIC WORKS ADMINISTRATION
- 5.6%** MOBILE VEHICLES, SHOPS & EQUIPMENT

COMMUNITY, RECREATION, CULTURE & SAFETY



\$329.71

- 7.5%** REGIONAL ENFORCEMENT, FIRE & DISASTER SERVICES
- 4.9%** COMMUNITY GRANTS
- 2.9%** PARKS & RECREATION SERVICES
- 1.6%** FAMILY & COMMUNITY SUPPORT SERVICES
- 1.4%** AGRICULTURAL SERVICES
- 0.3%** LIBRARY SERVICES

RUNNING THE MUNICIPALITY



\$226.90

- 12.8%** ASSESSMENT, ASSET MANAGEMENT, COMMUNICATIONS, COUNTY ADMINISTRATOR OFFICE, FINANCIAL SERVICES, HUMAN RESOURCES & SAFETY, INFORMATION TECHNOLOGY, INSURANCE & RISK MANAGEMENT, LEGISLATIVE SERVICES, PROCUREMENT

RECYCLE & WASTE MANAGEMENT; WATER SUPPLY & DISTRIBUTION, AND WASTEWATER COLLECTION & TREATMENT



\$287.16

- 6.7%** WATER SUPPLY AND DISTRIBUTION
- 4.6%** WASTEWATER COLLECTION & TREATMENT
- 4.9%** RECYCLING & WASTE MANAGEMENT FACILITIES & SERVICES

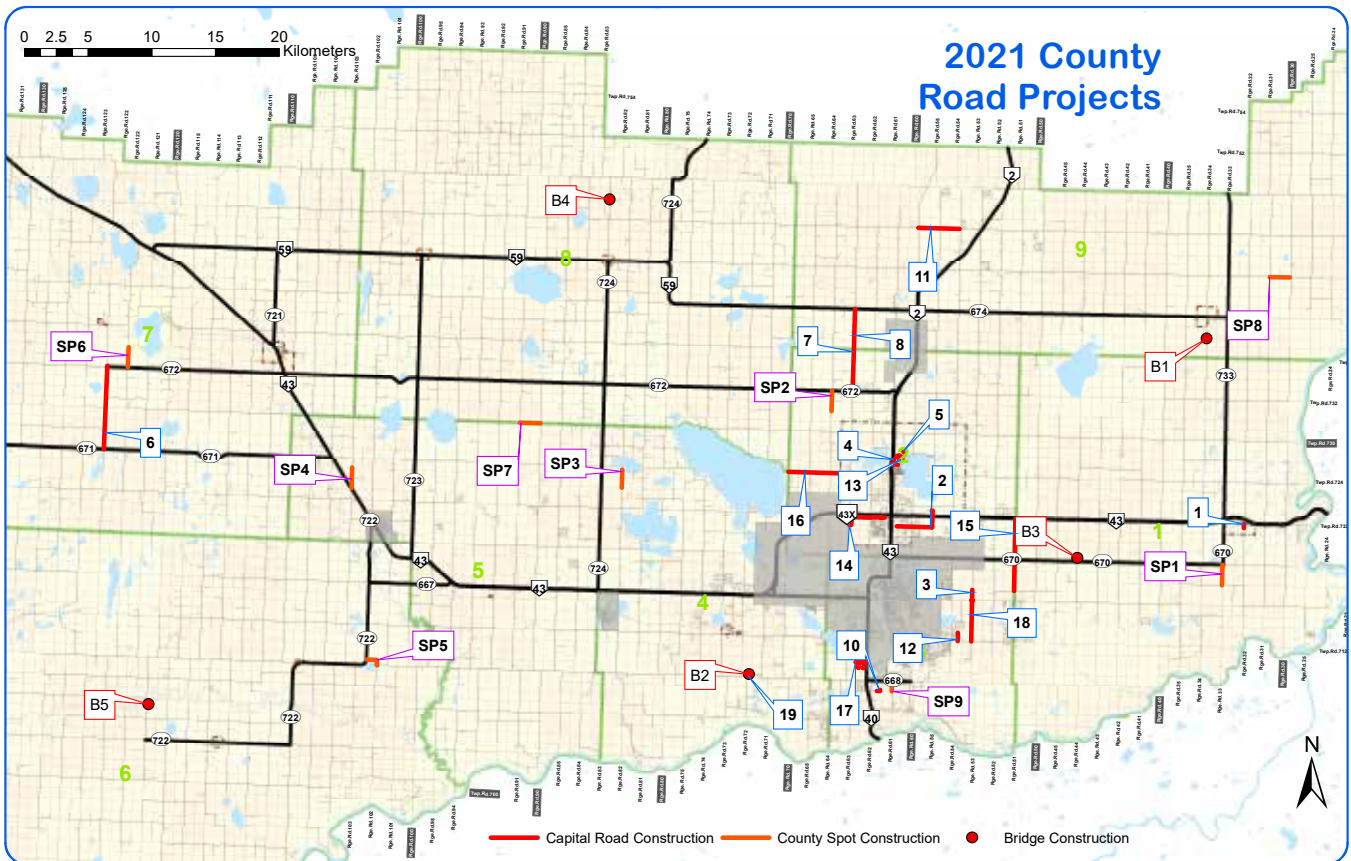
PLANNING & DEVELOPMENT



\$46.09

- 2.1%** LAND USE, PLANNING, ZONING & DEVELOPMENT
- 0.5%** ECONOMIC DEVELOPMENT

2021 Road Construction Projects



The County is gearing up for another busy season improving our vast transportation network.

Council approved over 56 per cent of the capital budget, \$50.1 million, for capital road and bridge projects this year.

The planned construction encompasses 57 km of road surfacing including the paving of gravel roads, surfaced road overlays, re-construction, divisional road projects, projects budgeted in previous years; bridge replacement and rehabilitation projects including \$2 million to repave Highway 724 (the project is cost-shared with the Province) and \$3.33 million this year for the Highway 40 Twinning and Bridge Construction (one-third of the County's total \$10 million contribution, the project is cost-shared with the MD of Greenview and Province).

Grant funding is estimated at \$11.3 million, including about \$1.3 million of Federal Gas Tax grant funding, and an estimated \$10 million in funding from the Provincial Municipal Sustainability Initiative (MSI) grant.

Thank you for your patience through this construction season.

The following is a list of activities on County roads that are planned for the 2021 construction season. The projects are labelled depending on the type of work and marked on the Construction Projects Map.

Visit www.countygp.ab.ca/roadconstruction to view an interactive map of this construction season projects, timelines and potential traffic impacts.

DID YOU KNOW?

Grading involves digging out an existing road structure to re-align, level or widen the road and building a new road from the bottom up.

Overlay work involves adding a new layer of pavement. This type of work can also include minor spot fixes and milling the surface on occasion.

Base Paving work involves removing the top layer of gravel, repairing the base of the road, if needed, then packing of the current road surface, and paving a layer of asphalt.

PROJECT #	ROAD PROJECT	TYPE OF WORK
1	Bezanson - 100 Street south of 100 Avenue	Overlay 0.34 km
2	156 Avenue and Range Road 55, Clairmont	Overlay 4.1 km
3	5 Mile Hall	Grading, Base Paving 0.8 km
4	Clairmont North	Overlay 0.9 km
5	Grande Spirit Connection	Grading, Base Paving 0.15 km
6	Range Road 123 - Highway 671 to Highway 672	Various Work 6.6 km
7	Range Road 63 - Highway 672 to Township Road 734	Various Work 3.2 km
8	Range Road 63 - Township Road 734 to Highway 59	Grading 3.2 km
10	River Road Estates East Portion	Overlay 0.33 km
11	Township Road 744 - Range Road 54 to Range Road 60	Various Work 3.2 km
12	Windwood Lane	Overlay 0.7 km
13	Wynngate Phase 4	Paving, Curb and Gutter 1.4 km
14	Highway 43X / 162 Avenue Days Inn	Base Paving 3.2 km
15	Range Road 51 - Township Road 714A to Highway 43	Overlay 5.7 km
16	Township Road 724 - Peregrine Industrial to Range Road 70	Grading 4.3 km
17	Sprucewood Park	Base Paving 2.10 km
18	Range Road 53 - Township Road 712 to City Limits	Grading 3.2 km
19	Spring Creek Road - Township Road 711	Various Work 0.43 km
SP1	Range Road 33 between Township Road 715 and Township Road 720/ Highway 670	Spot Construction 1.6 km
SP2	Range Road 64 south of Highway 672	Spot Construction 1.6 km
SP3	Range Road 82 south of Township Road 724	Spot Construction 1.6 km
SP4	Range Road 103 north of Highway 43	Spot Construction 1.6 km
SP5	Township Road 710 east of Highway 722	Spot Construction 1.6 km
SP6	Range Road 122 north of Highway 672	Spot Construction 1.6 km
SP7	Township Road 730 between Range Road 90 and 91	Spot Construction 1.6 km
SP8	Township Road 742 between Range Road 30 and 31	Spot Construction 1.6 km
SP9	Range Road 61 for 1/2 km south of Highway 668	Spot Construction 0.5 km
B1	Kleskun Creek (NW-28-73-3-W6M)	Bridge Culvert Replacement
B2	Spring Creek (SW-2-71-7-W6M)	Bridge Replacement
B3	Bear River (SW-4-72-4-W6M)	Bridge Replacement
B4	Mulligan Creek (NW-27-74-8-W6M)	Bridge Replacement
B5	Redwillow River (NW-24-70-12-W6M)	Bridge Replacement

Curb and Gutter work involves constructing concrete curbs and gutters along street sides to ensure proper stormwater drainage.

Intersection Improvements can involve traffic light installations and/or the improvement, extension, expansion or additional traffic lanes.

Spot Construction involves rebuilding a gravel road, including digging out old sections of a road and replacing with new clay and gravel.

Bridge Culvert Replacement involves replacing an underground steel tunnel, known as a culvert. Culverts carry stream water.

Flood Preparation and Mitigation



Managing surface water has become a key priority for the County of Grande Prairie after dealing with extensive damage to County infrastructure and personal property due to overland flooding, particularly last year.

In 2020, Council approved an estimated \$1.015 million to address priority surface management issues affecting the County's infrastructure. This funding is over and above the existing budget for road repairs of \$2 million and \$515,000 for ditch cleaning.

To mitigate the risk of flooding, the County completes several activities each year. Part of this effort includes predicting where flooding is most likely to occur ensuring flood prevention work is focused in the right areas. To do this, historic flood locations are combined with other data including past ditch cleaning, rock picking, road closures and phoned in resident reports. Other annual work includes:

- Identifying and prioritizing work on areas of concern.
- Steaming culverts in the late winter and early spring to ensure water flows freely when thawing starts.
- Repairing, replacing and enhancing culverts throughout the County.
- Picking large rocks and other debris from hundreds of kilometres of County ditches.

- Working with wildlife technicians to ensure beaver dams are recorded and removed as needed to prevent water backups.
- Building berms and other features from natural material to control water flow.

In addition to this annual work, Council approved a Surface Water Management Policy to serve as a guideline in managing and coordinating drainage activity in the County, with the goal of helping prevent future overland flooding issues.

WHAT CAN YOU DO?

There is never a bad time to refresh yourself on what you should do during flooding as it can occur at any time of the year due to heavy rain, melted snow or leakages from other water sources. Visit www.countygp.ab.ca/floodinformation for what to do if:

- A flood happens
- Your home floods
- Well water is affected by floods

Visit www.countygp.ab.ca/subscribe to sign up for information and emergency alerts to notify you of events in the County of Grande Prairie.

Sign for Alberta Emergency Alert flood notifications www.emergencyalert.alberta.ca to stay informed.

WHAT IS OVERLAND FLOODING?

Overland flooding is defined as waters that flow from an outside source or body of water onto dry land, causing water damage. In the County, the two most likely causes of overland flooding include snowmelt and rainstorms.

PROVINCIAL GOVERNMENT MAKES CHANGES TO DISASTER FINANCIAL ASSISTANCE

The Government of Alberta has made some changes to the disaster financial assistance and recovery support programs. These changes affect both homeowners and municipalities and came into effect on April 1.

When a disaster occurs, the County can apply to the Provincial government for a Disaster Recovery Program for financial assistance when uninsurable loss and damage is caused by emergencies and disasters. If approved, affected residents can apply for financial assistance. The financial assistance has new limits placed on it.

• Cost-Sharing

- The Province of Alberta has implemented a 90:10 cost sharing structure with local governments and private applicants, including homeowners and businesses. In other words, the Provincial government will provide financial assistance for 90 per cent of the eligible disaster costs and the impacted community and private applicants are responsible for the remaining 10 per cent.
- In the past, if a Disaster Recovery Program was approved, the Provincial government provided 100 per cent of the uninsured expenses.

• Homeowner Funding Limits

- The Provincial government has introduced a \$500,000 funding cap for each homeowner application. These changes take effect for 2021 and moving forward.
- A one-time limit on disaster financial assistance per property has been added. This means, starting in 2021, financial assistance can only be provided to a property once, even if the property transfers ownership, as the one-time limit is attached to the property address.
- No funding cap or financial access limit was in place before April 1, 2021.

For more information on changes made to the disaster financial assistance and recovery support, visit the Province of Alberta website:

www.alberta.ca/disaster-assistance-and-recovery-support.

BY THE NUMBERS:

While the numbers are not yet available for the 2021 season, the figures from 2020 show the extent of mitigation action being taken by the County.

2,175

Culverts
inspected

75

Culverts
installed

46 km

Crews rehabilitated ditches
along County roadsides

347 km

Crews cleared ditches of
rocks and debris

With landowners, working to complete priority areas list to mitigate future flooding issues. For the status of the priority projects, visit

www.countygp.ab.ca/floodmitigation

All About Wetlands



Wetlands play an important role in sustaining healthy watersheds by protecting and improving water quality, providing water storage to help reduce overland flooding and provide habitat for a variety of wildlife, fish and plants.

If you are considering an activity in a wetland or have questions related to activities within a wetland you can contact Alberta Environment and Parks at:

AEP.wetlands@gov.ab.ca

Wetlands are low-lying areas of land covered by water long enough to support aquatic plants and wildlife for part of their life cycle. Some wetlands only have water for a few weeks in spring or after a heavy rainfall, while other wetlands are always flooded, even in drought conditions.

Filling in or draining wetlands alters the ability of wetlands to perform water purification processes and handle flood flows, an increasingly important issue for downstream landowners concerned about excessive runoff or water quality degradation. Additionally, the loss of wetlands has a negative impact on a diverse range of plant and animal species, including migrating birds.

If you want to report an environmental concern or issue, including concerns about wetland impacts or overland flooding, please contact Alberta Environment and Parks' 24-hour reporting line at **1-800-222-6514**.



countygp.ab.ca

Wildfire Mitigation: Saving Homes and Lives

Fire season is upon us once again. It is important to stay up to date on FireSmart, the County's Wildfire Mitigation Strategy, the work taking place this season and how your input has helped shape future strategy.

ABOUT FIRESMART

FireSmart is a planning tool that helps reduce the risk of wildfires in our communities. Throughout the year, the County provides opportunities for you to learn how to protect your property and that of your friends and family from wildfires. The County's FireSmart program includes two main focus areas:

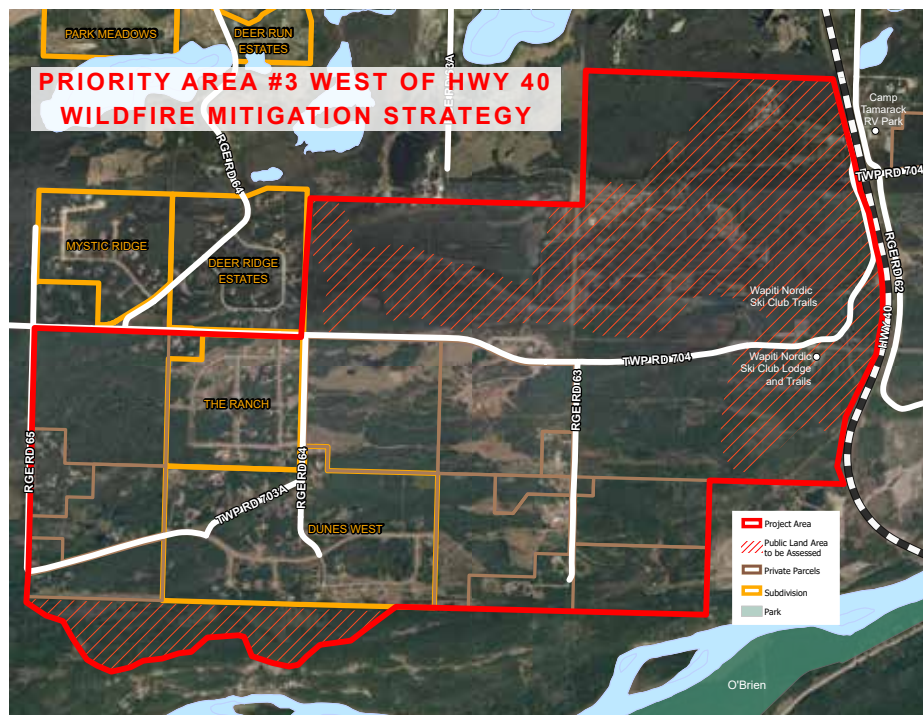
- Wildfire Mitigation Strategy
- Mountain Pine Beetle Program

THE WILDFIRE MITIGATION STRATEGY

The County's Wildfire Mitigation Strategy, approved in 2015, aims to lower the risk of wildfire, or, in the case of a wildfire, reduce the risk of loss of life and damage to infrastructure. This strategy includes mapping, vegetation management, public engagement and education. The strategy works with the Mountain Pine Beetle Program to make our communities safer places to live, work and play.

HIGHWAY 40 WEST FIRESMART PROJECT

This spring, we moved onto Priority 3 of our Wildfire Mitigation Strategy, the area west of Highway 40 to Range Road 65. In April, a registered professional forester began work assessing public lands in the area and identifying areas of high wildfire risk where action needs to be taken. These public lands include portions of the Wapiti Nordic Ski trails near the subdivisions of Deer Ridge Estates, Deer Run Estates, Mystic Ridge and Park Meadows, as well as south of the Dunes West subdivision. While the assessment was underway, the County hosted residents at two virtual sessions about FireSmart and reducing the risk of wildfires.



The findings and plans for future mitigation will be presented to area residents and other key stakeholders at engagement sessions this summer. Feedback was considered in finalizing the final report, which will be presented at a future Council Meeting.

Read more about the project,
www.countygrip.ab.ca/hwy40westfiresmart.

As a local resident, your involvement is an important part of the FireSmart program. Throughout the year, the County provides a number of opportunities to learn how you can make an impact.

- Subscribe to FireSmart education and other County and community events through our Events Calendar at www.countygrip.ab.ca/events
- Learn more about FireSmart at the County of Grande Prairie, including a virtual webinar, at www.countygrip.ab.ca/firesmart
- View our Wildfire Mitigation Strategy at www.countygrip.ab.ca/wildfiremitigation

ANSWER THE CALL

Make Firefighting Part of Your Life

Ready to make a difference in your community by protecting lives and property in the County of Grande Prairie? Then becoming a member of the Regional Fire Service might be right for you.

Recruitment is underway for paid responders in stations located in Bezanson, La Glace and Teepee Creek as well as the Sexsmith Fire Department.

"Paid responders are regular people in our communities who come from all walks of life and bring different skills and experience," said District Fire Chief Nolan Jespersen. "They are your co-workers, your neighbours and your friends. We want members from a wide variety of backgrounds who are committed to learning new skills, being part of a team and making a difference in our community, no matter your career or previous experience."

On-Call firefighters are paid for emergency response, station duties and training. The team environment includes flexible work, as little as a few hours a month, and free professional training.

"We truly have a team environment where we support each other in protecting our communities," said Jespersen. "We train all firefighters to professional standards, so everyone is ready to provide fire and rescue services throughout the County of Grande Prairie. If you feel you have the skills to serve the community in this capacity and meet the criteria, I encourage you to apply today."

County Council continues to invest in a well-trained and equipped Regional Fire Service with the recently completed new fire station in the Hamlet of La Glace as well as new equipment throughout the County, including three National Fire Protection Association (NFPA) rated water tenders for transporting water from a dugout or standpipe to the scene of a fire as well as two new fire engines that just went into service at the La Glace and Bezanson stations.

MEET THE NEW DISTRICT FIRE CHIEF

Nolan Jespersen joined the County of Grande Prairie in February. Previously, Jespersen was the Deputy Fire Chief in both the Town of Stony Plain and Yellowhead County and brings 20 years of experience as both a volunteer and a paid firefighter. As the District Fire Chief, Jespersen works with the County's administration team and manages the Sexsmith, Bezanson, La Glace and Teepee Creek fire stations.

ANSWER THE CALL TODAY

More information and application details are available at: www.countygp.ab.ca/paidresponders or by calling District Fire Chief Nolan Jespersen at 780-532-9727.



MINIMUM QUALIFICATIONS:

- Live within 15 minutes from applicable fire station
- 18 years of age with a Grade 12 education
- Alberta Driver's License with a safe driving record demonstrated in a Driver's Abstract
- RCMP Criminal Records Check
- Doctor's letter confirming medical fitness to perform firefighting duties

BENEFITS:

- Help your community and connect with community members
- Flexible work schedule
- Free and transferable training, including advanced medical training, driver training and more
- WCB and life insurance coverage

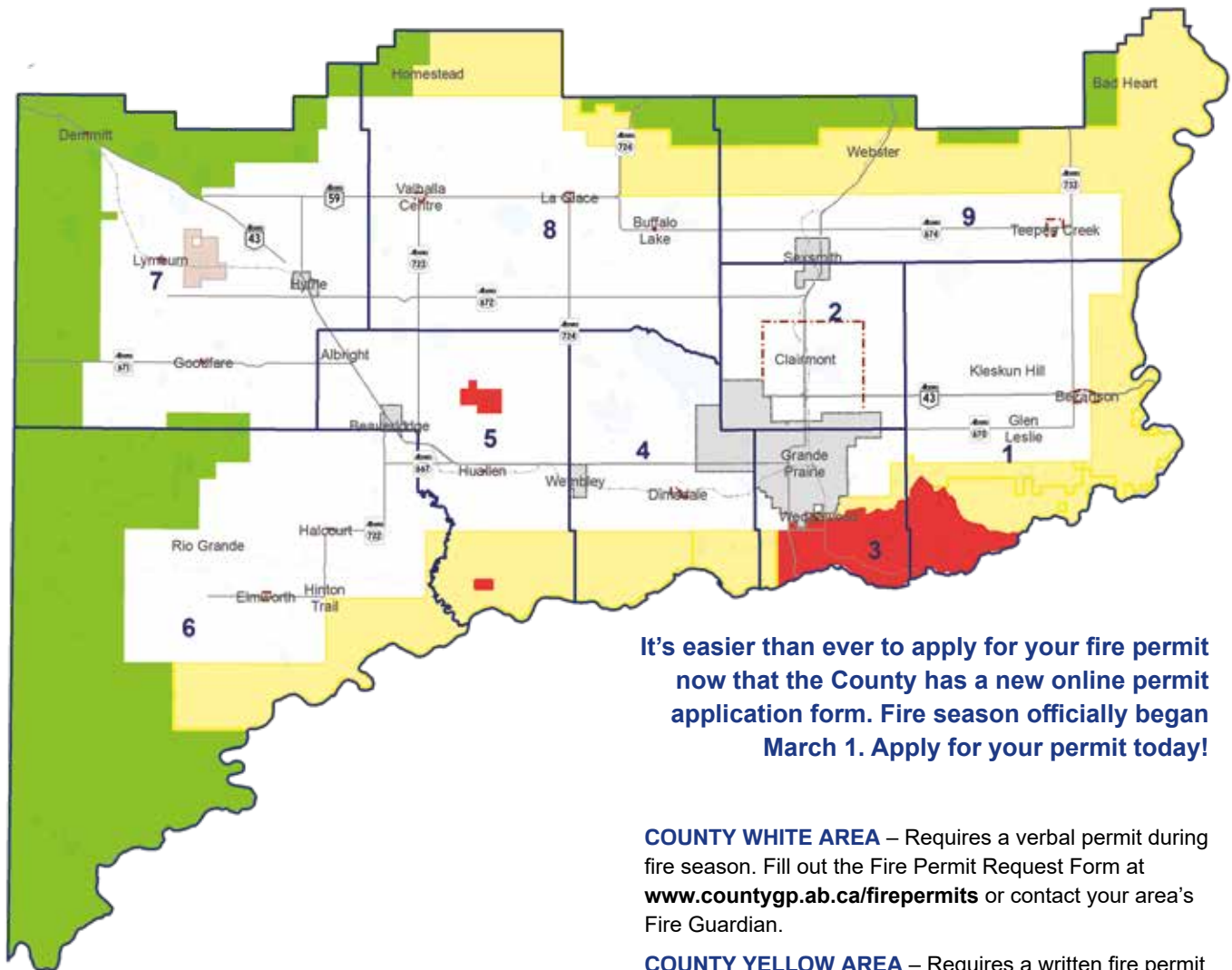


District Fire Chief Nolan Jespersen



countygp.ab.ca

It's Fire Season – Apply For Your Permit Online



It's easier than ever to apply for your fire permit now that the County has a new online permit application form. Fire season officially began March 1. Apply for your permit today!

"Regardless of which area you live in within the County, you can apply for a fire permit," said Fire Marshal Ken Atamanchuk. "With the application process now online, it makes the process easier for residents. After completing the initial application, the next steps in the process are determined by which area you live in and the ability to meet the safe burning guidelines."

Applications will not be approved if the safe burning guidelines are not met.

The County has four Fire Burn Areas displayed in white, yellow, green and red.

COUNTY WHITE AREA – Requires a verbal permit during fire season. Fill out the Fire Permit Request Form at www.countygp.ab.ca/firepermits or contact your area's Fire Guardian.

COUNTY YELLOW AREA – Requires a written fire permit during fire season. Fill out the Fire Permit Request Form at www.countygp.ab.ca/firepermits or contact your area's Fire Guardian.

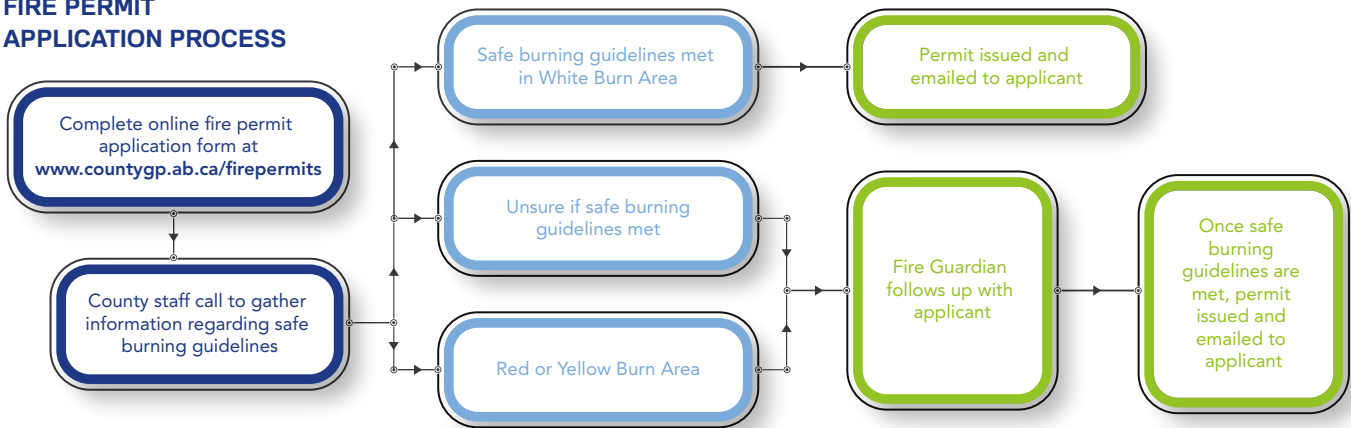
COUNTY RED AREA – This is a restricted burn zone. Permits are required year round. Fill out the Fire Permit Request Form at www.countygp.ab.ca/firepermits or contact your area's Fire Guardian.

COUNTY GREEN AREA – Requires a written fire permit during fire season from a Provincial Forestry Fire Guardian as this area is designated as the Forest Protection Area. To locate your nearest office, go to www.wildfire.alberta.ca/firepermits or call 310-0000.

FIRE GUARDIANS

Depending on the Fire Burning Area of the County that you're located in (see above map), a Fire Guardian may be in charge of issuing fire permits and educating residents on safe burning practices. Visit www.countygp.ab.ca/fireguardians for the official Fire Guardian contact list.

FIRE PERMIT APPLICATION PROCESS



There is no burning of household garbage permitted within hamlets or residential subdivisions (an area of land divided up into building lots containing more than five adjoining residences). An inspection and permit are required prior to burning and burning must take place in an approved incinerator or burn barrel.

"It is extremely important that residents follow the fire permitting process and safe burning guidelines," said Atamanchuk. "Wildfires and grass fires can spread very quickly and become uncontrollable, causing devastation. The rules are in place to help us all take care of our properties, people and forested areas."

It is important to note that burning in any red zone is prohibited without a permit. This entire region is considered an extremely high-risk area for wildfires due to heavy fuel load and limited access.

In the event a Fire Ban is issued in the County, burn permits are no longer in place and new permits will not be issued until the ban is lifted. Notifications of fire bans are made through local media or can be found at www.albertafirebans.ca

For more information about fire permits, to clarify your Burn Area or request an inspection, contact Regional Fire Service at **780-532-9727** or visit www.countygp.ab.ca/firepermits.

SAFE BURNING GUIDELINES

- Have a valid fire permit.
- If a fire ban is issued, burn permits are no longer valid until the ban has been lifted.
- Do not leave any fire unattended.
- Do not burn in winds more than 12 km per hour.
- Keep adequate water supply or equipment nearby.
- Position your burn barrel/incinerator at least 30 metres away from structures or standing timber.
- Do not burn prohibited debris:
 - animal manure
 - pathological waste
 - non-wooden material
 - tires
 - rubber or plastic
 - used oil
 - combustible material in automobile bodies

ATCO MOVING FARM EQUIPMENT NEAR POWER LINES?

CALL US FOR HELP 1-855-277-1670

Farm equipment has doubled in height since 1950. Power lines haven't. Plan ahead and call us before moving equipment near power lines. We will:

- Measure power lines in your yard or field
- Help plan the safest route
- Lift the power lines, if needed

Assume downed power lines are energized. Stay at least 10 metres away and warn others of the danger.

CALL 911 OR ATCO'S ELECTRICITY 24 HOUR EMERGENCY LINE: 1-800-668-5506

Livestock Emergency Response Plan project to involve local farmers

.....

The County is developing a Livestock Emergency Response Plan (LERP) to deal with potential disasters such as wildfire or floods, or even livestock transport accidents. To make sure we have an accurate plan that addresses as many risks as possible and identifies what to do based on the type of livestock, we need the help of local livestock owners.

Agriculture staff will be calling County residents to ask for information on the type and approximate numbers of livestock on their property. All information will be kept strictly confidential, and there will be no identifying information made public. This information will only be used in the event of an emergency, to help emergency response staff understand the size of the impact on farmers in the area. For example, a farmer with three goats and 10 cows needs different resources than a farmer with 200 cow-calf pairs.

With your help, we can develop a robust plan that will be able to ensure that livestock owners are supported should there ever be a major disaster in their area.

REGISTER LAND YOU ARE RENTING TO BE NOTIFIED FIRST IF THERE ARE NOXIOUS WEED CONCERNS!



DID YOU KNOW?

The County offers a registration service for farmers who rent land. Under the Weed Control Act of Alberta, landowners and/or occupants are to be notified when there are regulated weeds on their property. Many farmers rent significant acres each year, and if there are weed concerns, the landowner that the County has on file, not the renter, is contacted. This is because County taxation records do not note who is renting from whom.

If you are a producer renting land and want to be first to be informed if there are noxious weed concerns, contact the Agriculture department at **780-532-9727** to register the land you rent. All information will only be used for the stated purpose and will not be shared.

Weed Inspection: The Ins-and-Outs

.....

As the crops begin to grow, so do the weeds.

County weed inspectors will be working with residents to address noxious or prohibited-noxious weeds on their property. The County's primary focus is raising awareness of weed issues so residents can take action to control their weeds so they do not spread. Weed infestations in crops can be very costly to manage, so we encourage you to do your part to reduce the risk of spread.

When a County inspector finds weeds on a property or in a crop, we are required under the Weed Control Act of Alberta to inform the landowner/occupant of the problem. We do that by usually having a conversation with the landowner/occupant if available, and then sending an information package. This package is **not** a Weed Notice, but it does ask the landowner/occupant to call the weed inspector to let them know how the weeds will be controlled. Once that is done, the field is inspected (after the individual said they would complete the work) and the report is closed.

Because we are bound by the Weed Control Act to follow up on any sightings of regulated weeds, we must contact the landowner/occupants and inform them of the concern. This is why, for example, someone growing peas may get a package informing them that there are noxious weeds in their crop, even though they are aware of the weeds and may not be able to do anything about them at that time.

We know that the farmer can do nothing about them at the moment, but we must follow up and be informed of when the farmer plans to control them (at or after harvest). We do understand that it can be irritating to receive these packages, as most farmers know about the weeds before we do! However, the requirement for the County to address regulated weeds is clearly outlined in the Act, and we must comply.

Weed Notices are only issued when repeated attempts to contact or work with the landowner/occupant are not successful, or if a property has received a Weed Notice in the past and the problem continues. Weed Notices are not typically a surprise to those who receive them. As always, our first response is to inform and work together to address the problem. Weed Notices are our last step. If you have any questions or concerns about our weed inspection process, please contact Sonja Raven, Agricultural Fieldman, at **780-532-9727**.

Building Season Is Upon Us

Don't delay, submit your applications early!

Building permits are required to ensure construction follows the building code, including:

- Construction of a building
- Renovations
- Relocations
- Additions
- Change in occupancy

Development permits are required for approval of the use of the land, including:

- Excavation
- Stockpiling
- Building and additions
- Change of use or intensity of use of the land or building

Separate permits for Electrical, Plumbing, Gas, Propane and Private Sewage Systems may also be required.

Learn more at www.countygp.ab.ca/permits, call 780-513-3950 or email plan@countygp.ab.ca.

What's New: Clairmont Readdressing Proposal



WE ARE LISTENING

From November 2020 through January 2021, the County surveyed residents and businesses in Clairmont about potentially readdressing of the Hamlet. Thank you to the 551 respondents for taking time to share thoughts and feedback.

As expected, responses varied from zero interest to full support with every level in between. Many respondents, including those in support of the initiative, expressed frustration with having to deal with a potential change, including:

- Having recently been through an address change,
- The general inconvenience and time commitment to change, and
- The potential for financial impacts associated with a change.

Several specific issues with addressing in the Hamlet were identified, as well as broader concerns such as inability to receive deliveries, problems with mapping services, and an overall need for improvements to the addressing process.

WHAT'S NEXT?

We are working on a report outlining what we heard from residents and other stakeholders, also known as a What We Heard Report. The report will be presented to County Council as well as published to the project page on our engagement platform.

Visit www.countygp.ab.ca/addressclairmont and subscribe for project updates to be notified in advance of the report being presented to Council.



countygp.ab.ca

Studying Oil & Gas



In early 2020, the Oil & Gas Study was launched to understand the potential growth of industrial development across the County, as well as to avoid potential future conflicts. By forecasting the future of oil and gas development, the County can make more informed plans for the future.

The study includes the following objectives:

- Understanding future oil and gas development potential within the County.
- Identifying potential infrastructure and servicing needs related to these developments.
- Creating direction of where this development may occur.
- Reducing the impact these industries may have on neighbouring residential, agricultural, and recreational uses.

This study has two main components that will help meet the objectives above.

Study Components	Geographic information system (GIS) analysis	Municipal Development Plan (MDP) amendments
Definition	GIS is a framework rooted in the science of geography used for gathering, managing and analyzing data.	The MDP is a broad, long-term planning document addressing future growth and development in the entire County.
Application	To identify potential infrastructure needs and key areas of petroleum-based industry in the County.	To add direction and policies that support industry development while balancing impacts to other uses and infrastructure in the County.

Throughout 2020, the oil and gas industry provided comments and feedback to determine factors of development. Prior to being presented to Council this fall, the public will have opportunities to comment on this project. Watch for the public sessions on the events calendar at www.countygp.ab.ca/events.

Questions or comments about the County's Oil & Gas Study can be directed to Planning & Development at **780-513-3950** or plan@countygp.ab.ca.

Apply for Community Grants by August 1

Organizations that deliver recreation or cultural services to County residents can apply to Capital Assistance and Major Grant programs.

These grants help organizations pay for improvements or repairs to their facility.

CAPITAL ASSISTANCE GRANTS

Community groups can apply for up to 50 per cent of project costs, up to \$50,000, to improve or repair a physical facility through the Capital Assistance Grant program. The infrastructure must be a recreational or cultural facility that serves County residents.

MAJOR CAPITAL GRANTS

Community groups can apply for funding to support projects of more than \$100,000 through the Major Capital Grant program. New construction, rehabilitation, repairs or improvements to a recreation or cultural facility that serves County residents are eligible.

These grants help keep the County of Grande Prairie a great place to live, work and play. A huge part of healthy and vibrant communities are recreational and cultural opportunities, which the County has in spades. The funding provided through these programs helps support the spaces and places where our residents, residents of the area and visitors spend time.

The County awards Capital Assistance and Major Capital grants annually. Last year, Council approved \$1,765,750 in Major Capital and \$598,516 Capital Assistance grant funding to support important projects throughout the County, Beaverlodge, City of Grande Prairie, Hythe, Sexsmith and Wembley.

For more information about Recreation and Culture Grants, and to apply online by August 1, visit www.countygp.ab.ca/grants.



Last year, the Wapiti Nordic Ski Club was able to use \$4,825 of County Capital Assistance Grant funding to upgrade outdoor lighting at their Biathlon range.



DID YOU KNOW...

That all sump pumps, eavestroughs and any type of pump drainage on properties in the County must drain within their own property lines? This is with accordance section 8.10 in the Community Standards Bylaw #3098, introduced in spring of 2019.

Excess water that flows into County greenspaces, parks and playgrounds can cause water damage and drown trees, as shown in the picture. Also, waterlogged playground sand encourages weed growth. In many cases, parks have their own irrigation systems already, so do not require any additional watering. In the winter, improper placement of these drainage mechanisms can cause ice hazards on trails and other publicly accessed walkways and land. Failure to comply with this bylaw may result in the property owner being fined or facing other penalties for repeat offenses. For more information about the Community Standards Bylaw, visit www.countygp.ab.ca/csb.



Coming Up at the Clairmont Centre for Recycling & Waste Management

CONSTRUCTION

In the 2021 budget, County Council approved \$4.7 million for the construction of a new landfill cell, adding more space for waste, at the Clairmont Centre for Recycling and Waste Management. Construction of the new cell, access road and leachate pond (to collect liquid generated by the waste - garbage juice) will take place this summer. The impact to visitors will be minimal other than increased activity and a need for caution as crews and equipment are moving around.

The new cell will collect waste for about seven years. The more waste that you divert from the landfill through composting, reducing, reusing and recycling, the less frequently Council needs to invest funds in building new cells. Learn more about recycling and waste management at

www.countygp.ab.ca/recyclingprograms.

CHANGES TO THE LANDFILL ACCESS TAG PROGRAM

While the details are still being ironed out, changes to the way County residents access the Clairmont Centre for Recycling & Waste Management through Landfill Access Tags are expected later this year. Stay tuned to our website and social media channels for updates as they become available.

www.countygp.ab.ca



Recycling Corner

Let's keep printed material and cardboard out of the landfill!

CARDBOARD AND PAPER RECYCLING DOS AND DON'TS

Do Recycle

- Newspapers, flyers and junk mail
- Magazines, catalogues, household paper and envelopes
- Shredded paper (in a see-through bag and tied closed)
- Cardboard egg cartons and paper tubes
- Flattened cardboard – when boxes are left whole our bins fill up very fast and less cardboard is collected
- Paperback and hardcover books (separate hardcovers from pages)

Don't Recycle

- Tissues, napkins and paper towel go in the garbage. Even unused items can't be recycled with paper and cardboard.
- Soiled paper or boxes go in the garbage
 - If part of a pizza box is clean, remove and garbage the stained area, and recycle the remaining clean cardboard.

Materials may be brought to our landfill recycling areas, transfer stations, and recycling sites throughout the County. For more information about Recycling & Waste Management visit www.countygp.ab.ca/recyclingprograms or call the Landfill Information Line at **780-567-4194**.



Are you interested in energy industry activity in the Wapiti area?

Check out the Wapiti Area Synergy Partnership (WASP) at www.wapitiasp.ca to find out about opportunities to connect with area industry representatives, learn about upcoming projects, attend meetings, and watch expert presentations.

Summer Youth Programs are Back!



Kiddos enjoying crafts at the 2019 summer program in Clairmont.

Children aged six to 12 can enjoy fun and exciting indoor and outdoor activities led by engaging and energetic leaders this summer.

Activities include arts and crafts, games, and much more. Participants are provided healthy snacks and will bring their own lunch. Sessions will run on weekdays in various communities throughout the County.

More details about this year's summer programs for youth, including specific locations, fees, dates and times, will be available in June. Register early as spaces are limited.

Stay tuned to the County's website at www.countygp.ab.ca/youthprograms and the County's social media channels for information.

*All sessions will follow COVID-19 guidelines set by the Provincial government. Visit www.countygp.ab.ca/covid19 for up-to date information on the County's COVID-19 response.

Play, Learn and Grow Together

Spaces are still available for the County's Playschool Programs starting this fall. These child-centred programs focus on delivering developmentally appropriate programming for four year olds and will be delivered in the following communities:

- Bezanson
- Clairmont
- Elmworth
- La Glace
- Valhalla
- Whispering Ridge Community School

Visit www.countygp.ab.ca/playschool for more details about the program, and to confirm the communities with spaces available.

*Please note that Early Childhood Development Programs are subject to change based on Provincial public health regulations. Visit www.countygp.ab.ca/covid19 for up-to-date information.



Reserve your Staycation!

COUNTY CAMPGROUNDS AND PARKS OPEN FOR VISITORS

.....

All County campgrounds and parks are open for everyone to enjoy from May 14 until October 15, 2021.

Whether you are looking to spend a few days in the great outdoors, take a day-trip not too far away from home or have some family or friends visiting, be sure to take advantage of the many recreational opportunities and overnight camping facilities in the County. Our campgrounds and parks are the perfect setting to unwind, relax, explore and have fun!

Plan ahead and book your site by phone at Bear Lake, Hommy or Kleskun Hill campgrounds or reserve online at Pipestone Creek. Demmitt Campground sites are available on a first-come, first served basis. Payment options include debit and credit. Cheques are no longer accepted and cash will not be accepted until further notice.

Guidelines continue to be in place to ensure the safety of campers and park users due to COVID-19. They are in sync with Provincial public health guidelines, and will be kept up-to-date as needed.

Current safety measures include*:

- Visitors must practice 6 ft / 2 m physical distancing outside of their households.
- Visitors must practice enhanced personal hygiene, especially when using outhouses.
- Visitors cannot enter campgrounds and parks if they are experiencing flu-like symptoms or have travelled outside of Canada within 14 days.

To reserve a site, view campground and park locations, descriptions, photos, amenities and services, for day-use and overnight camping individual and group rates, and more, visit www.countygp.ab.ca/campgrounds.



Bear Lake Campground & Park

BEAR LAKE CAMPGROUND – An ideal lake for canoeing, kiteboarding and paddleboarding, Bear Lake is about 5 km wide, nearly 10 km long and 2 m deep at its deepest point.

DEMMITT CAMPGROUND & PARK – Located northwest of Hythe, near the Alberta/BC border, the Demmitt Campground is an ideal spot for overnight camping, picnics and for travellers to rest.



Hommy Campground & Park

HOMMY CAMPGROUND & PARK – The former homestead of the Hommy family, generously donated for the public to enjoy. It has a wonderful park-like setting along the banks of the Beaverlodge River, and all sites have power hook ups.

KLESKUN HILL CAMPGROUND & PARK – Capture a glimpse of the northernmost badlands at Kleskun Hill Campground, located adjacent to the Kleskun Hill Natural Area and the Kleskun Hill Museum. Explore the fascinating cacti, native grasslands and land formations left behind after the ice age, step back in time at the historical village, or just relax while you enjoy the roar of an open fire.

*Campground and park operations and safety measures in place are subject to change in accordance with Provincial public health guidelines. Refer to www.countygp.ab.ca/campgrounds for the latest information. Fire Bans may be subject to change. Please check www.countygp.ab.ca for updates.



Pipestone Creek Campground & Park

PIPESTONE CREEK CAMPGROUND & PARK – Take a dramatic drive down the river valley where Pipestone Creek meets the Wapiti River. Here lies the hidden gem of Pipestone Creek Campground. Located along the Wapiti River, it is near one of the richest areas for dinosaur fossils in western Canada, and the largest site in the world for Pachyrhinosaurus fossils. Pipestone will open 25 new power sites in Loop A, and when Loop D is completed at the end of June, there will be 77 power sites available in total. Loops B and C will remain non-power sites. This summer, in partnership with Alberta Environment and Parks, we plan to expand the trail network at Pipestone, with 7 kms of natural trails added in phases by Fall 2021.

BEAR HILL CAMPGROUND – A great private, rustic venue. Available for day-use and group camping reservations.

VALHALLA CENTRE DAY-USE PARK – Conveniently situated in downtown Valhalla, the surrounding countryside is a welcome setting. It has the basic comforts for anyone looking to use it for an afternoon or a day.

OLD BEZANSON TOWNSITE – Along the banks of the Smoky River just 12 km southeast of Bezanson is the Old Bezanson Townsite and what remains of the dream of Ancel Maynard Bezanson. In the early 1900s he started building a community here in anticipation of the railroad link. The line passed through Grande Prairie instead, and now the Old Bezanson Townsite building footprints is what remains of his legacy. Group camping reservations available on the weekends.

RED WILLOW DAY-USE PARK – Nestled along the banks of the Red Willow River, the setting is perfect for large and small groups for day-use. The area is a haven for wildlife including moose, white-tailed and mule deer, black bear and a variety of small mammals and songbirds.



Red Willow Day Use Park

Camping Etiquette 101

Planning an afternoon, overnight or weekend visit to any of our campgrounds and parks in the County? To ensure everyone has an enjoyable experience, all guests are asked to follow these basic guidelines:

REMEMBER THE 3 Rs:

- Respect the Environment
- Respect your Neighbours
- Respect our Park Staff
- Avoid excessive and offensive noise at any time of day: Talking or singing loudly, music at high volume and any other noisy behaviour is not permitted.
- Quiet hours are from 11 p.m. to 7 a.m. This means all music and generators must be turned off, and noise must be kept to a minimum.
- Keep campfires small. This helps us conserve firewood, reduce the risk of wildfires and helps maintain low camping fees.
- Never leave your campfire unattended.
- Make sure your fire is extinguished before you leave. Soak it with water once, and then again, stirring the ashes. Do not burn any garbage in the fire pits. It is an offence to leave a fire unattended or burning (even smouldering) after vacating your site.
- Pets must always be kept on a leash.
- Check-out time is 2:00 p.m.
- Respect all posted speed limits. Be mindful and cautious of pedestrians and other obstructions while driving.
- A maximum of one vehicle is permitted per campsite.
- Visitors or additional vehicles must park in day-use or designated overflow spaces.



Get Out, Explore and Have Fun

THE NEW EVERGREEN RIDGE RECREATION AREA – YOUR GATEWAY TO NATURE

There's even more reasons to enjoy the outdoors in our beautiful County this summer. The new Evergreen Ridge Recreation Area is a 99-acre non-motorized day-use area suitable for year-round hiking, cycling and horseback riding for a variety of user groups, including pedestrians, on-leash dog walkers, cyclists and equestrians. Access to Crown land to the east will remain the same.

Located northeast of Evergreen Park and immediately north of the Peace Area Riding for the Disabled Society (PARDS), the recreation area includes a gentle rolling landscape with natural surface trails found throughout the site.

"This area is a very popular gateway to Public/Crown land to the east for outdoor enthusiasts," said Christine Rawlins, Parks and Recreation Manager. "While the County is enhancing the area for the safety and enjoyment of users, we intend to keep the area as natural and untouched as possible."

A number of enhancements have taken place this spring with more work underway this summer. Funding for this work was approved as part of the 2021 operating budget.

• Completed Enhancements:

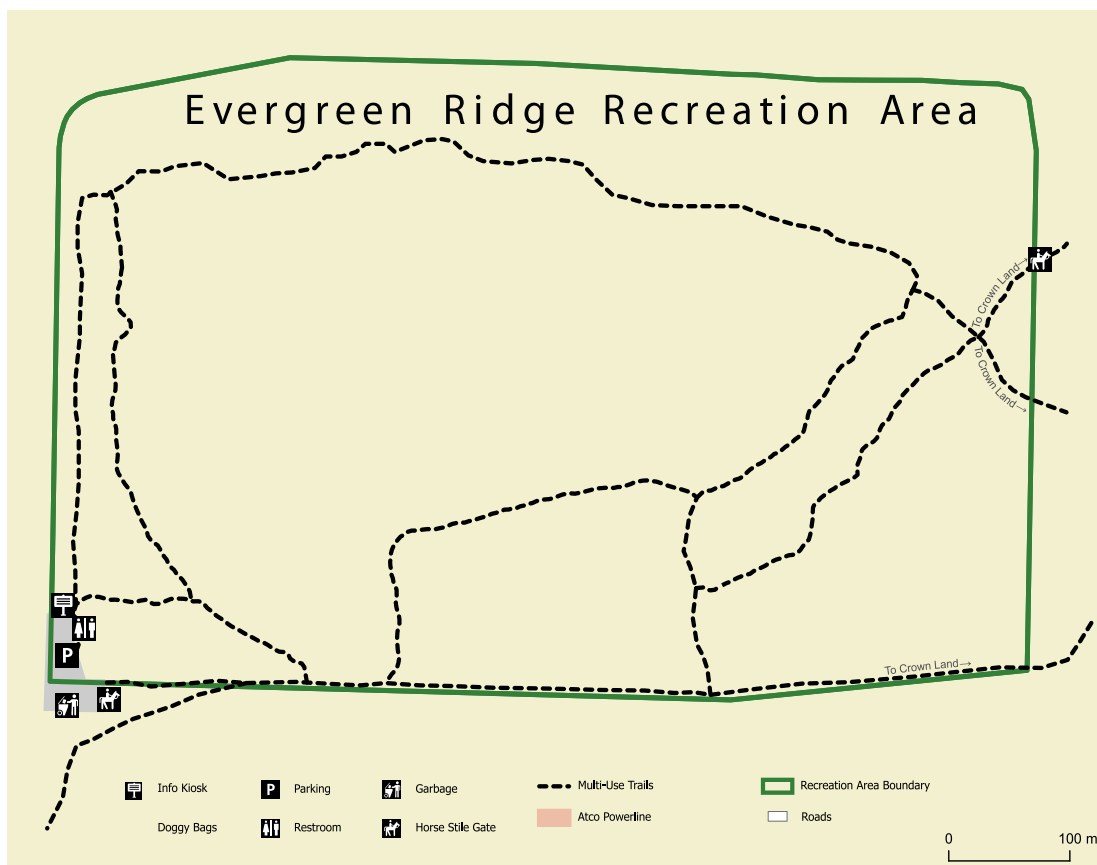
- Installation of an information kiosk in the parking lot
- Waste management containers in the parking lot
- Porta-Potty in the parking lot
- Area map sign in the parking lot

• Future Enhancements:

- Gates at the west boundary fence for pedestrian and equestrian access
- Fencing around the east boundary to enhance security which will include a pedestrian and equestrian gate
- Improvements to the parking area

The County has a 10-year lease agreement with the Province of Alberta to manage the land. As part of this agreement, the Province requested a management plan for the area, which Council approved in January of this year.

The management plan provides a transparent public record of the County's responsibility for managing the area, outlines its approved use, and aims to avoid user conflict.



Parking for the Evergreen Recreation Area is located off Range Road 55. From the City of Grande Prairie, travel south on Resources Road. Turn east on Township Road 710 and proceed past the entrance to Evergreen Park to a T intersection. Turn north onto Range Road 55 and the parking lot is immediately on your right.



There are a few use restrictions for this area:

- No overnight stays
- No fires
- No vehicle access, including off-highway vehicles (OHV)
- Pets must be on leash and under control

These restrictions do not necessarily apply to adjacent Public/Crown land. For more information on provincial regulations for Crown land, visit

www.alberta.ca/recreation-on-public-land-overview.aspx.

"We are featuring this new area and encouraging residents to come out for a visit by hosting recreation opportunities this season," said Rawlins. "More details on courses including BearSmart, AdventureSmart and Orienteering are coming soon."

Details on these courses will be posted to www.countygp.ab.ca/recreationprograms.

For more details on the Evergreen Ridge Recreation Area, visit www.countygp.ab.ca/EvergreenRidge.

FOR THE ENJOYMENT OF ALL

- Be considerate of others.
- Avoid excessive noise.
- Avoid illegal behaviours that bother or disturb others. See the Community Standards Bylaw for more details.
- Follow all applicable COVID-19 regulations set by the Province of Alberta.

For complete details on County parks and greenspaces regulations, see the Parkland Conservation Bylaw at www.countygp.ab.ca/bylaws.



How to Reach County Regional Enforcement Services

Do you have questions, concerns, complaints? Would you like information regarding traffic safety and enforcement? The following is a list of important contacts in the event you ever need to reach Regional Enforcement Services. Feel free to tear away this contact information and place it in a familiar place for your reference.

Phone: 780-532-9727

Email: enforcementservices@countygp.ab.ca

Online: www.countygp.ab.ca/occurencereporting

Secure Fax: 888-779-5895

How to Reach the Grande Prairie Regional Animal Care Facility

For animal shelter, pound services and adoptions:

Phone: 780-830-0199

Email: regionalpound@countygp.ab.ca

Fax: 780-532-4745

How to Report a Drug House

Phone: 780-830-5889

Online: www.countygp.ab.ca/drughouse

For Emergencies

EMERGENCIES (POLICE, FIRE & EMS)	911
RCMP GRANDE PRAIRIE	780-830-5700
RCMP BEAVERLODGE	780-354-2485
LITTER – CROWN LAND/TRAILS	1-800-222-6514
WILDLIFE EMERGENCIES	1-800-642-3800
PUBLIC LANDS ABUSE	1-800-642-3800
REPORT A POACHER	1-800-642-3800
REPORT A DRUG HOUSE	780-830-5889
SAFE COMMUNITIES (SCAN)	1-866-960-SCAN (7226)
WILDFIRE HOTLINE	310-FIRE (3473)
ENVIRONMENTAL EMERGENCIES	1-800-222-6514
PUBLIC WORKS EMERGENCIES	780-532-7393
ALBERTA SPCA	1-800-455-9003
DANGEROUS GOODS	1-800-272-9600
POISON AND DRUG INFORMATION	1-800-332-1414
PET POISON	1-800-213-6680
ANIMAL POISON	1-888-426-4435
OCCUPATIONAL HEALTH & SAFETY	1-866-415-8690
CHILD ABUSE HOTLINE CRISIS UNIT	1-800-638-0715
CANADIAN NATIONAL (CN) RAIL	1-800-465-9239



countygp.ab.ca



PHILIP J. CURRIE DINOSAUR MUSEUM

Summer Programing



Pipestone Naturalist Summer Camp

Become a junior naturalist and explore our beautiful backyard, the Peace Parkland region! Campers will spend a week among the prehistoric rocks and boreal forest of Pipestone Creek, learning through exploration and games about natural history in a safe, fun, outdoor setting. Centred near one of the world's most famous dinosaur bonebeds, campers will build scientific literacy through activities tailored to each child's age group. Raven Level campers will even get the chance to search for fossils and learn how to prepare them in our palaeontology lab!

CHICKADEE LEVEL

AGES: 4 - 6

DATES: July 5 - 9 July 12 - 16
 July 26 - 30 August 16 - 20

TIME: 9:00 a.m. - 4:00 p.m.

COST: \$230

GRAY JAY LEVEL

AGES: 7 - 11

DATES: July 12 - 16 July 26 - 30
 August 9 - 13 August 16 - 20

TIME: 9:00 a.m. - 4:00 p.m.

COST: \$250

RAVEN LEVEL

AGES: 12+

DATES: July 20 - 23
 August 3 - 6

TIME: 9:00 a.m. - 4:00 p.m.

COST: \$300

Palaeontologist for a Day | Half Day

What lies buried just under the surface? In either of our Palaeontologist for a Day programs, you will join a real palaeontological excavation this summer and find out for yourself! As a member of the excavation team you will receive a behind the scenes tour of the museum, and a chance to search for fossils in the Pipestone Creek bonebed!

Available for adults and youth aged 12+.



Visit **www.dinomuseum.ca** for more information.



The Crosslink County Sportsplex has a program for everyone!

780-830-7407 | info@cgpsportsplex.com | www.crosslinkcountysportsplex.com

The Crosslink County Sportsplex is a state-of-the-art recreation complex located just five minutes north of the City of Grande Prairie.

Users of all ages can enjoy:

- Premier Baseball Diamond
- Two Slo-Pitch Diamonds
- Premier Soccer/Football Field
- Three Mini Soccer Pitches
- Outdoor Playground with Fitness Component

The facility is ideal for a range of activities, including:

- | | | |
|----------------|---------------------|---------------------|
| • Hockey | • Ball Hockey | • Dry-land Training |
| • Skating | • Box Sports | • Kids Camps |
| • Soccer | • Ringette | • Sports Academies |
| • Sports camps | • Softball | • Bubble Soccer |
| • Cricket | • Tackle | • Birthday Parties |
| • Lacrosse | • Football | • Conditioning |
| • Rugby | • Athletic Training | • Competitive Camps |
| • Baseball | | |

Enjoy programs and drop-in play for all ages:

- | | |
|---------------------------|----------------------------------|
| • Adult Shiny | • Hockey 101 |
| • 13 & Under Stick & Puck | • Seniors Walk & Talk |
| • Tender Tots | • Various Fieldhouse Activities |
| • Stick & Puck | • Indoor Minor Soccer Fun League |
| • Bouncy Castle Days | • Spring/Summer Kids' Camps |
| • Learn to Skate | • Family Day Drop-ins |
| • Ball Hockey | |

Save the Date for Summer Kids' Camps

Kids aged 5 to 12 are invited for seven weeks of fun-filled activities at our Summer Kids' Camps.

Camps are planned for July 12 – August 20, 2021 with a new theme each week! Kids will experience games, crafts, recreational sports, as well as skating on our indoor ice rink. Our Summer Camps are designed to spark the imagination, confidence, independence, and communication skills of all our campers.

For more information and to register, please visit
www.crosslinkcountysportsplex.com or LIKE US on



HOURS OF OPERATION

(excluding holidays)

SPORTSPLEX

6:00 a.m. - midnight weekdays

8:00 a.m. - midnight weekends

GUEST SERVICES

8:30 a.m. - 8:30 p.m. daily

MOTION FITNESS

6:00 a.m. - 10:00 p.m. weekdays

8:00 a.m. - 8:00 p.m. weekends

Hours may vary depending on Provincial public health guidelines. Visit our website for up-to-date information.

Visit our website for up-to-date information on current facility COVID-19 guidelines in place for the health and safety of visitors, athletes and staff.



Return undeliverable
Canadian addresses to:
The County of Grande Prairie No.1
10001 - 84 Avenue, Clairmont, AB T8X 5B2



TOP ROW FROM LEFT TO RIGHT: Councillor Harold Bulford, Councillor Bob Marshall, Deputy Reeve Peter Harris, Councillor Corey Beck

FRONT ROW FROM LEFT TO RIGHT: Councillor Linda Waddy, Councillor Daryl Beeston, Reeve Leanne Beaupre, Councillor Ross Sutherland, Councillor Karen Rosvold

COUNCILLOR CONTACT INFORMATION

Councillor Harold Bulford
Division 1
780-876-9009
hbulford@countygp.ab.ca

Councillor Daryl Beeston
Division 2
780-933-3464
dbeeston@countygp.ab.ca

Reeve Leanne Beaupre
Division 3
780-814-3121
lbeaupre@countygp.ab.ca

Councillor Ross Sutherland
Division 4
780-512-5385
rsutherland@countygp.ab.ca

Councillor Bob Marshall
Division 5
780-933-2053
bmarshall@countygp.ab.ca

Deputy Reeve Peter Harris
Division 6
780-933-3074
pharris@countygp.ab.ca

Councillor Linda Waddy
Division 7
780-897-5609
lwaddy@countygp.ab.ca

Councillor Karen Rosvold
Division 8
780-831-0902
krosvold@countygp.ab.ca

Councillor Corey Beck
Division 9
780-831-6394
cbeck@countygp.ab.ca

SENIOR ADMINISTRATION

Joulia Whittleton
Chief Administrative Officer
780-933-8712
jwhittleton@countygp.ab.ca

Nick Lapp
Director of Planning &
Development Services
780-532-9722
nlapp@countygp.ab.ca

Dan Lemieux
Director of Community
Services
780-532-9727
dlemieux@countygp.ab.ca

Dale Van Volkingburgh
Director of Public Works
780-532-9722
dvan@countygp.ab.ca

Carol Gabriel
Director of Corporate
Services
780-532-9722
cgabriel@countygp.ab.ca

Mark Schonken
Director of Financial
Services
780-532-9722
mschonken@countygp.ab.ca

COUNTY CONTACT INFORMATION

EMAIL:

info@countygp.ab.ca

ADDRESS:

10001 - 84 Avenue
Clairmont, AB T8X 5B2

WEBSITE:

www.countygp.ab.ca

OFFICE HOURS:

8:30 a.m. to 4:30 p.m.
Closed from 12 p.m. to 1 p.m.
and on statutory holidays

COUNTY ADMINISTRATION BUILDINGS

Administration, Assessment, Asset Management, Corporate Services, Economic Development, Finance, Information Technology, Insurance/Risk Management, Legislative Services, Procurement, Communications, Human Resources, Public Works, Planning and Development Services

780-532-9722

COMMUNITY SERVICES BUILDINGS

Agriculture, Family and Community Support Services, Regional Enforcement Services, Regional Fire Service, Parks and Recreation

780-532-9727

Follow us on Twitter

Watch us on YouTube

Like us on Facebook