



County of  
Grande Prairie No. 1

# County of Grande Prairie

2025 Annual Report

# THE COUNTY OF GRANDE PRAIRIE BY THE NUMBERS

**562 KM**

**PAVED  
ROADS**

VERSUS 396 KM  
IN 2015



**26,701\***  
**POPULATION**

2024 COUNTY OF  
GRANDE PRAIRIE  
MUNICIPAL CENSUS  
UP 11.88%  
SINCE 2021\*



**30**  
**PLAYGROUNDS**



**38.4\***  
**MEDIAN  
AGE**



**3,697 KM**

**TOTAL ROAD  
NETWORK**



**\$510,000\***

2025 AVERAGE  
ASSESSED VALUE  
OF SINGLE-FAMILY  
RESIDENTIAL  
PROPERTIES IN  
THE COUNTY



**32 KM**

**PAVED  
MULTI-  
PURPOSE  
TRAILS**



**249**

**BRIDGE  
STRUCTURES**



**\$137,740\***

**MEDIAN  
HOUSEHOLD  
INCOME**



## CONTENTS

- 2 By the Numbers
- 3 Messages from the Reeve and County Manager
- 4 County Divisions & Area Councillors
- 5 Advocacy Update
- 6 Plan Your County
- 7 Emergency Preparedness – A Joint Effort
- 8 Spotlight on Events
- 9 Community Contributions
- 10 Snapshot of Funds at Work in the Community

---

### 11 2022-2026 Strategic Plan

- 12 Effective Transportation Networks
- 13 Fiscal Management
- 13 Economic Development
- 14 Effective Land Use Management
- 15 Governance and Leadership
- 16 Community Wellness and Safety

- 
- 18 2025 Budget Highlights
  - 19 Key Service Responsibilities

**\*Sources:**

Population – 2024 County Municipal Census

Population Growth – 2021 Federal Census 23,769

Median Age – 2021 Census of Population (Statistics Canada)

2025 Average Assessed Value of Single-Family Residential Properties – County Assessment Software

Median Household Income – 2025 County Retail Gap Analysis

## MESSAGE FROM THE REEVE

### Amanda McDonald



The past year was one of growth, collaboration, and progress for the County. Your feedback helped shape Council's strategy and decision-making, reflecting your priorities of roads and public safety.

Council approved a modest municipal tax increase to maintain service levels in 2025, and we provided meaningful support toward grants for community services and programs. To improve safety and connectivity, we directed nearly 70 per cent of the capital budget to roads and bridges.

We know these are challenging times in the current economy. Your councillors are your neighbours and friends; they work hard to represent your needs while balancing the cost of providing the high quality of life we enjoy. Their focus is on keeping programs and services sustainable while managing the rising inflation that affects us all—individuals, businesses, and the County organization.

Community safety remains a shared responsibility. The County hosted four crime prevention town halls to engage with residents. We're also offering free Property Security and Safety Assessments through our Community Safety Coordinator, providing practical tips to reduce crime risk. We strengthened emergency services through RCMP and policing support, including funding for Clairmont's Municipal Police Service Agreement, and further investment in the new Teepee Creek Fire Hall.

Council declared an agricultural disaster in April, joining other municipalities in urging provincial and federal governments to coordinate support. Wildfires impacted our communities, resulting in two activations of the Grande Prairie Regional Emergency Partnership (GPREP) in 2025.

We welcomed a new Council after the Municipal Election in October, with five returning and four new members. We are encouraged by this new Council and invite you to connect and get to know them.

Residents benefit when we create efficiencies through Intermunicipal Collaboration Frameworks and cost-sharing service agreements. Access to recreation is essential to a high quality of life, and we were pleased to sign new recreation agreements with the City of Grande Prairie and renew existing agreements with the towns of Beaverlodge and Sexsmith.

We opened our support for healthcare professional recruitment and retention to include nurse practitioners. Students will be encouraged to stay in our region for enhanced medical opportunities through our major investment in the Maskwa Medical Centre. Our grant for the new Ken Sargent House reflects our concern for families in need of accommodation during hospital stays. Affordable housing in the Hamlet of Clairmont is moving closer to reality thanks to our land commitment to the Grande Spirit Foundation.

We are proud of what can be achieved when we listen to residents and work together as a region to build sustainable, prosperous, and safe communities.

---

## MESSAGE FROM THE COUNTY MANAGER

### Joulia Whittleton



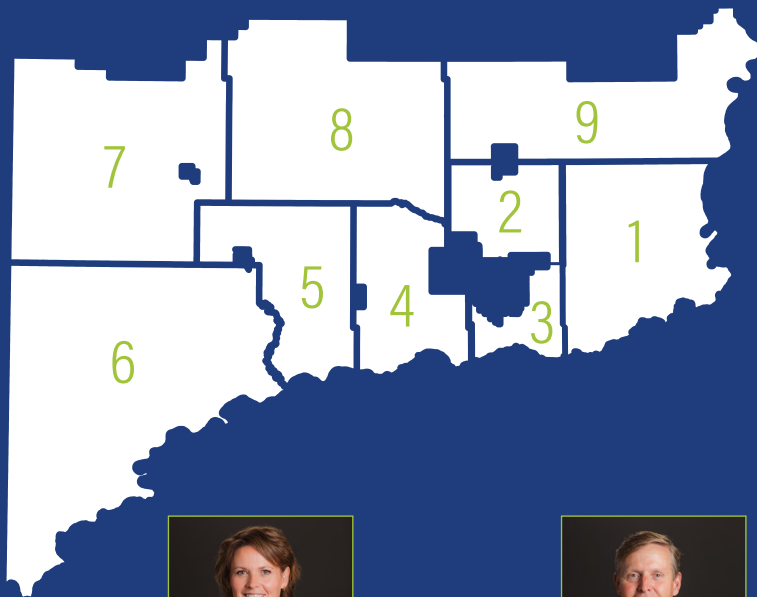
Looking back at 2025, I want to recognize how hard County staff worked to serve our community. Every day, they demonstrated honesty, openness, respect, and teamwork. These values guide our decisions and help us provide great services, making our County a wonderful place to live and work.

We saw continued growth and collaboration. We handled changes, faced another tough wildfire season, and advanced important projects highlighted in this report. Through it all, we kept delivering the services our residents, businesses, and communities rely on.

The budget process was more challenging and required sharper focus. Our departments found new ways to bring in money, helping us use public resources wisely and efficiently. Our County is strong and able to bounce back from challenges, thanks to the dedication of our people.

The past year has reaffirmed that our achievements are magnified through teamwork and collaboration. I believe we will continue making progress in 2026, with the same commitment and pride in what we do.

# COUNTY DIVISIONS & AREA COUNCILLORS



Councillors represent you and the divisions where you live or do business, and welcome your feedback. Find out about the boards and committees they serve on at [www.countygp.ab.ca/committees](http://www.countygp.ab.ca/committees).



**1** **Division 1 Councillor and Reeve**  
**Amanda McDonald**  
780-518-3197  
amcdonald@countygp.ab.ca



**2** **Division 2 Councillor**  
**Kurt Balderston**  
780-814-8404  
kbalderston@countygp.ab.ca



**3** **Division 3 Councillor**  
**Terri Beaupre**  
780-933-5537  
tbeaupre@countygp.ab.ca



**4** **Division 4 Councillor**  
**Marty Tissington**  
780-876-3252  
mtissington@countygp.ab.ca



**5** **Division 5 Councillor**  
**Brian Lieveise**  
780-814-4017  
blieveise@countygp.ab.ca



**6** **Division 6 Councillor**  
**Brian Grant**  
780-876-4222  
bgrant@countygp.ab.ca



**7** **Division 7 Councillor**  
**Brian Peterson**  
780-228-0034  
bpeterson@countygp.ab.ca



**8** **Division 8 Councillor**  
**Karen Rosvold**  
780-831-0902  
krosvold@countygp.ab.ca



**9** **Division 9 Councillor and Deputy Reeve**  
**Bob Chrenek**  
780-897-3577  
bchrenek@countygp.ab.ca

# ADVOCACY UPDATE

**The County of Grande Prairie advocates to the provincial and federal governments on several issues that impact community wellbeing and quality of life.**

County Council approved three Government Advocacy Priorities for 2025-2026: Economic Development, Transportation, and Health. These areas are crucial for maintaining and enhancing quality of life in the County; they shine a light on our community's urgent needs and help maximize available opportunities.

## 2025 - 2026 ADVOCACY PRIORITIES

1

### Economic Development

Gain economic development opportunities for the County with a focus on job creation, workforce development and talent attraction, economic diversification, and infrastructure development.

2

### Transportation

Promote awareness of transportation infrastructure needs in the County with the provincial and federal governments to ensure robust economic development, safety, and resilience.

3

### A Healthy Community

To better meet local needs, the County seeks improvements to healthcare services, including attracting professionals to our area. Read about additional advocacy priorities at [www.countygp.ab.ca/advocacy](http://www.countygp.ab.ca/advocacy).



County councillors hosted the **County's first Advocacy Day** at the Alberta Legislature, engaging in productive discussions with Premier Danielle Smith, Ministers and MLAs. The event created an opportunity to highlight regional priorities and challenges impacting the quality of life for County residents.

## 2025 SUCSESSES

### Economic Development

- Attended CERAWEEK, a Texas-based global energy conference.
- Hosted the Premier and provincial representatives for the County's first Advocacy Day in Edmonton.
- Advocated for a fairer electricity rate for northern Alberta users.
- Regional partnership Invest NW Alberta advanced in 2025, with Council approving its formalization alongside the City of Grande Prairie and MD of Greenview.
- Philip J. Currie Dinosaur Museum tour with the Premier and cabinet following formal engagement during their visit to Grande Prairie.
- Attended the 34th annual PNWER Summit, a public/private partnership of elected representatives from Alberta, BC, Saskatchewan, NT, Yukon, Alaska, Idaho, Montana, and Washington State.

### Transportation

- Engaged with the Government of Alberta on the Highway 40X Bypass between Highways 40 and 43, and ongoing advocacy for this critical route.
- Joined representatives from the province and neighbouring municipalities for a ribbon-cutting ceremony to celebrate the completion of the Highway 40 twinning project.
- Pushed for rail service improvements to drive economic growth, enhance reliability, and reduce road infrastructure strain.

### A Healthy Community

- Expanded the Physician Recruitment and Retention Grant to include nurse practitioners and successfully supported the recruitment of a physician in Beaverlodge.
- Invested \$500,000 in Maskwa Medical Centre to enhance medical training opportunities, encouraging students to stay in our region.
- Council approved the Crime Prevention Committee's 2025 workplan and extended the Community Safety Coordinator position to the end of 2026.

# PLAN YOUR COUNTY

## Preparing for the Future

The Plan Your County project began in 2023 and continued through 2025. This project involves updating the overarching planning documents like the Municipal Development Plan (MDP) and Land Use Bylaw (LUB), which set the vision, direction, and rules for how land develops across the County. Most importantly, these plans align with the values and goals of the people who call the County home.

### Ongoing Elements of Plan Your County

#### Municipal Development Plan Update (2023-2026)

After multiple rounds of engagement in previous years, a draft MDP was shared with residents in 2025. A third and final round of public engagement in 2025 included three open houses and two online events, to give residents the opportunity to see the plan, ask questions, and provide input. Their feedback was incorporated in the final MDP, which will serve as the long-term plan for land use and future development across the County—ensuring sustainable growth that meets the needs of our community over the next 50 years.

#### Area Structure Plans (ASPs)

These plans provide detailed direction for growth and development in specific areas. In 2025, the Clairmont Heights ASP was amended to reflect site reclamation following the

removal of oil wells. With this amendment, the land may be redesignated to accommodate future development. Multiple ASPs will be reviewed in 2026.

### Upcoming Elements of Plan Your County

#### Land Use Bylaw (2024-2026)

This bylaw is influenced by the MDP and is more detailed, outlining zoning standards that apply to property uses, such as building setbacks, fence heights, and parking requirements. The bylaw review will ensure alignment with residents' needs and improve application processes. Currently in an administrative phase, the LUB review will require further phases and public consultation throughout 2026.

Resident engagement is vital to the success of Plan Your County. Please visit [www.countygp.ab.ca/PlanYourCounty](http://www.countygp.ab.ca/PlanYourCounty) to learn more.

2,534+  
VISITS TO  
[countygp.ab.ca/  
PlanYourCounty](http://countygp.ab.ca/PlanYourCounty)



50+  
PEOPLE  
ENGAGED



4  
IN-PERSON  
EVENTS



2  
ONLINE  
EVENTS



7  
EMAIL  
UPDATES



## County Leading the Way in Responsible AI Governance

As part of its strategic priority of Governance and Leadership, the County is dedicated to innovative leadership with a strong commitment to customer service that best fits the needs of residents and businesses. This includes fostering a culture of innovation and continuous improvement across the organization.

Generative Artificial Intelligence (AI), the latest wave of technological innovation, can be used to create a wide range of content, including text, imagery, audio, and synthetic data.

The County was among the first municipalities to establish an AI Taskforce, which conducted focus groups with staff and Council to gather valuable feedback. This work, along with additional research, informed the development of a framework to address potential risks while enabling the effective use of AI technology in County operations.

Key outcomes included a guiding AI procedure, along with ethics training designed to empower staff to use AI safely and innovatively. Staff only use AI tools outlined in the County's approved AI software list.



# EMERGENCY PREPAREDNESS

## A JOINT EFFORT

Partnerships remain at the heart of the County's success. The Grande Prairie Regional Emergency Partnership (GPREP) unites the County and City of Grande Prairie, along with the towns of Beaverlodge, Sexsmith, and Wembley, to respond to wildfires and other large-scale emergencies while strengthening regional preparedness. For clear, trusted and timely communications when it matters most, visit [www.gprep.ca](http://www.gprep.ca) and follow @GPREPAIAlerts on Facebook and X.

In 2025, GPREP was activated twice in the County: first for the Deer Ridge Estates wildfire in May when, thanks to the swift response of firefighters and emergency personnel, no homes were destroyed; and again, in June for the estimated 26,628-hectare Kiskatinaw River wildfire which crossed the British Columbia–Alberta border. County Regional Fire Service provided structural protection for properties at risk within the County and supported the BC Wildfire Service and Alberta Wildfire, the lead agencies that managed the incident.

### Wildfire Mitigation Strategy and Vegetation Management

Council approved the 2025 Wildfire Mitigation Strategy, which includes public awareness and engagement. The plan promotes wildfire prevention measures for residents, landowners, businesses, and the County, reinforcing that safeguarding the area is a shared responsibility. Community preparedness is an element, as well as proactive actions people can take to keep their communities safe. The plan expands public education through workshops, events, and open houses to encourage FireSmart™ participation and deepen understanding of local wildfire risks.

### Critical Alert Communication

In 2025, the County's Communications and Marketing department moved to a year-round 24/7 on-call model to provide timely crisis communications. May 2025 marked one year since the County launched Voyent Alert, a platform for providing residents with critical alerts about emergencies such as fires and floods, and day-to-day services. Don't wait for emergencies to strike; join the nearly 4,000 County residents who have already downloaded the app or registered for updates via email, text, or voice call at [www.countygp.ab.ca/alerts](http://www.countygp.ab.ca/alerts).

### FireSmart Expansion

In 2025, a Regional FireSmart Coordinator advanced vegetation management and public engagement. The new coordinator position provides programming for

the County of Grande Prairie, City of Grande Prairie, towns of Beaverlodge, Sexsmith and Wembley, and Horse Lake First Nation. Regional Fire Service hosted wood chipping events and promoted lithium-ion battery safety after several landfill fires—supporting community wildfire prevention across the County.

### Fire Hall Construction

In 2025, construction began on the new Teepee Creek Fire Hall. The \$4.5 million facility is expected to be completed by end of summer in 2026. Once completed, the new three-bay fire hall will provide the infrastructure needed to support modern training, emergency response, and equipment storage—while expanding support to Sexsmith, Bezanson, and Clairmont.

In October 2025, Regional Fire Service welcomed two new water tenders, providing additional water supply for rural communities, while enhancing fire protection for County residents.

### Managing Livestock Emergencies

The Livestock Emergency Response Plan (LERP) registers livestock locations and resources to strengthen communication and protect animals during disasters. It also provides resources for agriculture producers to enhance protection of their operations. Enrolling ensures responders understand specific needs, enabling faster and more effective emergency support. Learn more and register at [www.countygp.ab.ca/lerp](http://www.countygp.ab.ca/lerp).

# SPOTLIGHT ON EVENTS

The County of Grande Prairie is proud to host and facilitate events that celebrate residents' pride and community spirit.

## County Open Houses

County Open Houses offer opportunities for residents to engage with County staff and councillors, and provide feedback on initiatives. In August 2025, an expanded Open House was held at Saskatoon Lake Community Hall after postponing June events due to the Kiskatinaw River wildfire.

## Joint Event Marked Alberta Day 2025

The second annual Alberta Day celebration saw the County of Grande Prairie and the Wembley Arts Cultural and Historical Society join forces to co-host a celebration on September 1 to mark the province's founding. Families took part in a full day of activities, entertainment, and cultural experiences across two community venues—the Philip J. Currie Dinosaur Museum and the Wembley Arts Cultural and Historical Society—with free busing connecting the sites.

## Kids Can Catch

Kids Can Catch 2025 offered a day of family fun and fishing at the J.D.A. County Sportsplex Pond. This free annual event provides a day of learning, making memories by the water and, if you're lucky, the fun of reeling in a catch.

## Seniors' Week

Seniors' Week 2025 fostered connections between seniors and younger generations at two intergenerational lunches held in Hythe and Clairmont in June. The events were co-hosted by the County's Family and Community Support Services (FCSS) and local schools.

## Passionate Hearts

The Passionate Heart Awards, held annually in February, celebrates outstanding working professionals who make significant contributions to the social services sector in our region. Sponsored by FCSS from the County, City and surrounding towns, the event honours individuals, teams, and businesses dedicated to improving their community through their work. In 2025, six individuals and two organizations were recognized for their exceptional impact.



# COMMUNITY CONTRIBUTIONS

The County of Grande Prairie invests millions of dollars in grants each year to enhance the wellbeing of its residents and to support committed local citizens who put the funds to work for their communities.

**\$10.07 MILLION**  
TOTAL COMMUNITY CONTRIBUTIONS AND GRANTS

**\$1.06 MILLION**  
IN CAPITAL PROJECTS



**\$1.7 MILLION**  
IN COMMUNITY ASSISTANCE GRANTS



**\$195,840**  
TO SUPPORT ACCESSIBLE TRANSPORTATION FOR RESIDENTS



**\$366,872**  
TO SUPPORT PREVENTATIVE SOCIAL PROGRAMMING Through Non-Profit Organizations



**\$55,904**  
IN CEMETERY GRANTS



<b>\$872,135 TO LOCAL RECREATION BOARDS, INCLUDING:</b>	
Beaverlodge – Elworth – Hualen Area Recreation Board	\$97,617
Clairmont – Bezanson Area Recreation Board	\$150,436
Grande Prairie Area Recreation Board	\$47,400
Hythe – Demmitt Area Recreation Board	\$255,770
Sexsmith – La Glace – Teepee Creek Area Recreation Board	\$276,831
Wembley – Saskatoon Lake – Dimsdale Area Recreation Board	\$44,081

**\$5 MILLION**  
ALLOCATED TO NEIGHBOURING MUNICIPALITIES Through Intermunicipal Collaboration Framework Agreements

# SNAPSHOT OF FUNDS AT WORK IN THE COMMUNITY



**\$1.5 MILLION  
TO SUPPORT THE LA GLACE &  
DISTRICT AGRICULTURAL SOCIETY**

\$500,000 per year (2024-2026) in addition to \$77,738 for an ice plant rental and \$101,310 for operations as part of a \$4.5 million total investment for the new recreation facility



**\$789,646  
TO SUPPORT EVERGREEN PARK**

including operating support



**\$493,500  
TO THE NITEHAWK YEAR-ROUND  
ADVENTURE PARK**

\$123,375 per year (2023-2026) for capital equipment replacement



**\$400,000  
TO THE PHILIP J. CURRIE DINOSAUR MUSEUM**

for operations



**\$300,000  
TO THE GRANDE PRAIRIE  
YOUTH EMERGENCY SHELTER SOCIETY**

\$100,000 per year (2023-2025) for the new Sunrise House



**\$180,000  
TO THE GRANDE PRAIRIE  
REGIONAL SPORT CONNECTION**

\$60,000 per year (2025-2027) for operations



**\$258,000  
TO THE ART GALLERY OF GRANDE PRAIRIE**

\$86,000 per year (2023-2025) for operational funding



**\$200,000  
TO STARS**

for operations



**\$200,000  
TO RISING ABOVE**

\$100,000 per year (2024-2025) for a new building



**\$79,900  
TO THE SOUTH PEACE REGIONAL ARCHIVES**

for a three-year term (2024-2026) for operational funding



**\$50,000  
TO THE GRANDE PRAIRIE  
MINOR BASEBALL ASSOCIATION**

for facility upgrades



**\$40,000  
TO THE SPRING LAKE SKI HILL ASSOCIATION**

with half allocated to operational funding



**\$25,000  
TO THE TEEPEE CREEK SCHOOL**

for a new playground



**\$25,000  
TO THE BEAR CREEK FOLK FESTIVAL SOCIETY**

for the Bear Creek Folk Festival



**\$10,000  
TO THE ROYAL CANADIAN LEGION BRANCH 54**

for a window replacement

# 2022-2026 STRATEGIC PLAN

## Vision

The County of Grande Prairie No. 1. First in building sustainable, prosperous, and safe communities.

## Mission

The County of Grande Prairie builds on its natural environment and the entrepreneurial spirit of its citizens to provide opportunities for all.

## Our Values

The County of Grande Prairie Council commits to the following values. We will maintain high standards of ethical and professional conduct by being:

- Trustworthy
- Transparent
- Respectful
- Collaborative

## Our Operating Principles

We will use these principles to guide the decision-making and service delivery of our County. We will:

- Place the people we serve at the centre of our work.
- Be good stewards of our land, air, and water.
- Demonstrate fiscal responsibility and good financial management.
- Provide programs and services in an effective and efficient manner.
- Foster an entrepreneurial spirit and encourage sustainable agriculture, industry, and tourism pursuits.
- Be a good neighbour to our surrounding municipalities.
- Practice good governance and respect each other's roles.
- Create a work environment that contributes to employee health and wellbeing.

## STRATEGIC PRIORITIES

Six strategic themes lay the foundation of the County's work and planning. Read through the report for details of how the County has driven each priority forward in the past year.



**EFFECTIVE TRANSPORTATION NETWORKS**



**FISCAL MANAGEMENT**



**ECONOMIC DEVELOPMENT**



**EFFECTIVE LAND USE MANAGEMENT**



**COMMUNITY WELLNESS AND SAFETY**



**GOVERNANCE AND LEADERSHIP**

Learn more about County Council's Strategic Plan at [www.countygp.ab.ca/StratPlan](http://www.countygp.ab.ca/StratPlan).



*Councillors joined representatives from the province and neighbouring municipalities for a ribbon-cutting ceremony in December, celebrating the completion of the Highway 40 twinning project south of Grande Prairie. The County is proud to have contributed \$10 million to this project.*



## EFFECTIVE TRANSPORTATION NETWORKS

Effective transportation networks are a priority for the County. Safe and well-maintained roads and bridges drive economic development, support communities, and align with the priorities of residents and industry.

	2024	2025
Roads and sidewalks upgraded	51 km	62 km
Dust control applied	140 km	159 km
Gravel applied	810 km	864 km
Ditches rehabilitated	38 km	52 km
Repainted lines on paved roads	372 km	418 km
Culverts installed	142	181

Approximately \$69 million—70 per cent of the 2025 capital budget—was allocated toward capital road and bridge projects.

The 2025 road construction season included a variety of projects, from spot repairs and intersection improvements to full road rebuilds. Between full-scale rebuilds, paving, and expansions, crews laid more than 100,000 tonnes of asphalt, and 130,000 tonnes of gravel.



The Range Road 63 construction project involved the milling, inlay, and overlaying of 8.9 km between Highway 43 and Highway 672. This roadwork was part of the County's annual Surfaced Road Rehabilitation program, totalling over \$10.5 million in capital investment towards the County's strategic goal to provide effective transportation networks.



Operations and maintenance crews continued using proven techniques, and innovative Canadian products, like MG-30 to stabilize, suppress dust, and maintain rural gravel roads across the County.

**\$58.9**

**MILLION**

**INVESTED IN THE COUNTY'S TRANSPORTATION NETWORK**



**\$37.2**

**MILLION**

**INVESTED IN CAPITAL ROAD AND BRIDGE PROJECTS**



**\$21.7**

**MILLION**

**INVESTED IN ROAD AND BRIDGE MAINTENANCE**





## FISCAL MANAGEMENT

**The County relies on a sustainable financial framework to continue to build safe and prosperous communities.**



2025 BUDGET:

**\$216.5  
MILLION**

County of Grande Prairie Council approved the 2025 budget with a 2.4 per cent municipal tax rate increase to ensure alignment with public feedback, which consistently identifies roads and public safety as key priorities. The increase translates to approximately \$57.85 annually, or \$4.82 per month on a residential property valued at \$575,000.

The \$216.5 million budget includes an estimated \$118.3 million for general operations and \$98.2 million for capital investments.

Municipal taxes cover all items that contribute to quality of life, including roads, emergency services, and funding for community programs and facilities. Additionally, all municipalities, including the County, must collect education levies to fund schools on behalf of the provincial government and provide support for seniors housing. Municipalities are also bound by the *Legislative Act* to produce a balanced budget.



## ECONOMIC DEVELOPMENT

**The County helps drive vibrant, prosperous, and sustainable communities by facilitating connections with our partners and stakeholders to encourage economic and community development.**

In 2025, the County strengthened its position as a regional economic leader by advancing job creation, workforce development, talent attraction, diversification, and strategic infrastructure.

Our new Business Retention and Expansion Infrastructure Technology Grant provides up to \$2,000 in matching funds to support local businesses investing in productivity-enhancing technology and infrastructure.

Regional momentum is clear: the Grande Prairie - Greenview Corridor led Alberta in housing growth outside major metro areas, with 579 housing starts in 2025—a more than 60 per cent increase year-over-year. Collaboration remains our advantage. Through Invest NW Alberta, the County and City of Grande Prairie, and the MD of Greenview continue to build a region where families, businesses, and industry thrive.



*AltaGas Pipestone II facility began operations  
December 7, 2025*



# EFFECTIVE LAND USE MANAGEMENT

The County wants development to happen in the best and most appropriate locations. Sound planning and community engagement are key to the process.

## Construction and Development

	2024	2025
Inspections	1,712	2,559
Non-residential building permits	57	49
Residential building permits	290	488
Residential construction value	\$51,029,410	\$80,472,008
Non-residential construction value	\$17,338,852	\$37,855,095



## Plan Updates

### Municipal Development Plan (MDP)

The MDP provides long-term guidelines and policy direction for growth and development within the County. It guides the policy direction for other planning documents such as Area Structure Plans (ASPs) and the Land Use Bylaw. The County-initiated review has had three phases of public consultation to update policies directing different types of development, requirements for developments, preserving natural areas, and better agricultural land, among others. The public consultations for the MDP were completed in 2025.

### Windsor Area Structure Plan (ASP) – Underway

An ASP has been drafted to guide the development of approximately 388 hectares in the southwest part of the Hamlet of Clairmont, between Range Road 62 and 63, and south of Highway 43 to the City of Grande Prairie boundary. The draft envisions a framework for housing, neighbourhood and gateway commercial uses, services, and amenities.

### Intermunicipal Development Plans (IDP)

An IDP is a long-term and strategic plan between two or more municipalities. It is a coordinated and collaborative framework respecting land use, servicing, and transportation on lands adjacent to the boundaries of the respective municipalities.

In 2025, initial work began on an Intermunicipal Area Concept Plan for the area south of Grande Prairie. This plan is guided by the IDP and provides the framework for future land use, growth, infrastructure, and services.





# GOVERNANCE AND LEADERSHIP

Effective leadership of a municipality starts with a shared understanding of challenges and priorities.



## 2025 Municipal Election

The municipal election launched in January 2025, with an earlier nomination period, followed by nearly 10 months of public engagement. A total of 3,228 County residents, just over 20 per cent of eligible voters, cast ballots during advanced voting opportunities and Election Day. The County welcomed a new Council in October, with five returning and four new members. Councillors elected Division 1 Councillor Amanda McDonald as Reeve, and Division 9 Councillor Bob Chrenek as Deputy Reeve at the Annual Organizational Meeting in October.

## County Launches New Website

The County of Grande Prairie’s refreshed website offers a user-friendly, visually refreshed, and accessible online experience. Key improvements include streamlined navigation with a simplified menu structure, a modernized layout featuring high-quality visuals and consistent formatting, and full mobile responsiveness that meets accessibility standards. Take a tour at [www.countygp.ab.ca](http://www.countygp.ab.ca).

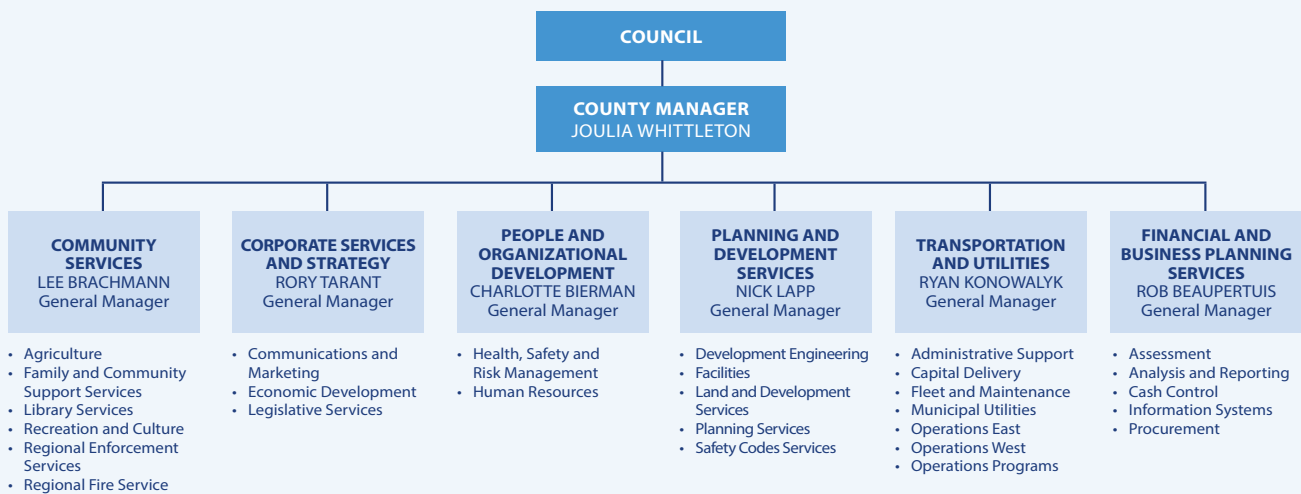
## Intermunicipal Collaboration Frameworks

Under the updated *Municipal Government Act*, municipalities that share a border are required to establish Intermunicipal Collaboration Frameworks (ICFs). These frameworks facilitate cooperation between neighbouring municipalities to ensure municipal services are delivered to residents in an efficient and cost-effective manner.

In 2025, the County finalized the Recreation and Culture New or Expanded Facilities Agreement with the City of Grande Prairie and signed the City–County Multisport Dome Capital Contribution Agreement, reflecting the County’s commitment to supporting the new Multisport Dome in the City, which broke ground in August. Renewed agreements with the towns of Beaverlodge and Sexsmith will support continued recreation access for County residents.

## How The County is Organized

Our organizational chart includes the people and divisions responsible for providing exceptional services to our communities.





# COMMUNITY WELLNESS AND SAFETY

The County prioritizes collaborating to develop and deliver programs and activities that create safe communities and a high quality of life for residents and business owners.

The County is committed to collaborating in the development and delivery of programs and activities. By prioritizing the safety and wellbeing of our community, residents and businesses experience a higher quality of life.

Through **It Takes a Volunteer**, the County celebrates the hard work and dedication of the people and organizations that keep the region supported and thriving. Since 2023, a total of 28 organizations and 28 individuals have been recognized through the program.

**Family and Community Support Services (FCSS)** continues to be an integral support to the region. In 2025, FCSS programs served more than 5,900 participants. From program-specific surveys, 96 per cent reported feeling more connected to others after participating and 95 per cent experienced improved personal wellbeing.

## Emergency Services and Proactive Planning

	2024	2025
Regional Fire Service calls for service	3,003	2,714
Fire permits	2,054	2,072
Fire investigations	41	26
Regional Enforcement Services calls for service	1,860	1,761
Regional Enforcement Services charges laid	3,536	3,502
Regional Animal Pound intakes	978	1,046



In 2025, Regional Enforcement Services held four **Crime Prevention Townhalls**, where residents and business owners connected with County Regional Enforcement Services and RCMP representatives on crime topics.

In 2025, Council approved the **Crime Prevention Committee's** 2025 workplan and extended the **Community Safety Coordinator position** to December 31, 2026.

**The Community Wellness and Safety Grant** provided \$500 to the Alzheimer Society of AB and NWT for its Walk for Alzheimer's event, \$1,250 to Peace Area Riding for the Disabled

Society (PARDS) for its Dine and Dance, and \$2,550 in rent subsidy for the Helping Homeless Restart Society.

A total of 61 joint enforcement initiatives were conducted between the **Grande Prairie Rural RCMP Detachment** and other policing partners in the area. These initiatives improve partnerships and enhance the ability of detachments to work together.

In April 2025, the County of Grande Prairie on behalf of the Hamlet of Clairmont entered into a **Municipal Police Service Agreement (MPSA)** with the Government of Canada. Under the agreement, four members

from the Grande Prairie Rural RCMP detachment were transitioned to create the Clairmont Municipal RCMP.

In March 2025, 55 **Regional Fire Service and Enforcement members** were recognized for their years of service, contributions, and career milestones. Another three Fire Service graduates completed their training.

## Agriculture

Since 1968, the County has celebrated farm families for their commitment to agriculture and community. In 2025, Kreg and Lee-Anne Alde, owners of Broken Tine Orchard, were recognized as Farm Family of the Year for their innovative farming and sustainability, and dedication to community.



	2024	2025
Weed inspections	37,516	27,937
Pest and disease	420	400
Ditches mowed	8,816 km	11,260 km
Ditches spot sprayed	2,778 km	3,726 km

## Recycling and Waste Management

Facility	2024	2025
Clairmont Centre for Recycling & Waste Management (Landfill)	3,696 tonnes diverted, 46,863 tonnes accepted	4,284 tonnes diverted, 46,239 tonnes accepted
West Grande Prairie Regional Transfer Station	254 tonnes diverted, 1,550 tonnes accepted	278 tonnes diverted, 1,249 tonnes accepted
Demmitt, Elmworth, and Teepee Creek Transfer Stations	417 tonnes accepted and rerouted to the landfill	537 tonnes accepted and rerouted to the landfill



Upgrades to the West Grande Prairie Regional Transfer Station—a partnership between the County and the towns of Beaverlodge, Sexsmith and Wembley—were completed in 2025 and included a full redesign to improve resident access, increase the number of bins, and enhance site safety.

## Recreation and Culture

The County maintains outdoor recreation and green spaces, as well as some community cemeteries.

In February, the County announced a **new naming partnership with J.D.A. Ventures Ltd.**, which saw the County Sportsplex renamed as the J.D.A. County Sportsplex.



In 2025, County campgrounds brought in a six per cent increase in total revenue compared to 2024. A passport program launched in 2025 to raise awareness of campsites and boost bookings. Seven campgrounds generated more revenue than in 2024. Campsite upgrades include new horseshoe pits at Pipestone Creek Campground and Hythe Municipal Campground, and the water-sport dock at Bear Lake Campground was extended by 30 feet, bringing its total length to 60 feet.

 **15,522** CAMPERS AT COUNTY CAMPGROUNDS

## Water and Wastewater

In 2025, the County's Municipal Utilities team undertook a \$1.2 million water main and curbstop replacement project in Bezanson and continued improvements in Hythe as well as County-wide storm-sewer inspections.

Council also approved a \$30 million 10-Year Capital Plan for County-owned water and sanitary sewer systems in the hamlets of Hythe, Valhalla, La Glace, Teepee Creek, and Bezanson in September 2025.

## Libraries

The County of Grande Prairie Library Board operates four libraries in our communities.

Physical and Digital Library Items Circulated	2024	2025
Elmworth Community Library	5,551	5,560
Hythe Community Library	10,818	11,930
La Glace Community Library	10,172	10,173
Valhalla Community Library	8,515	7,837

# 2025 BUDGET HIGHLIGHTS

How was the municipal portion of your 2025 tax dollars invested?



# KEY SERVICE RESPONSIBILITIES

## MUNICIPAL GOVERNMENT

### County of Grande Prairie



#### AGRICULTURE SERVICES & PROGRAMS

Roadside Mowing,  
Weed Control



#### ANIMAL SERVICES



#### COUNTY CAMPGROUNDS, PARKS, PLAYGROUNDS & TRAILS



#### DISASTER SERVICES



#### ECONOMIC DEVELOPMENT



#### FAMILY AND COMMUNITY SUPPORT SERVICES



#### LAND USE PLANNING, ZONING & DEVELOPMENT



#### LIBRARIES



#### PROPERTY TAXES Municipal Portion



#### REGIONAL ENFORCEMENT SERVICES



#### REGIONAL FIRE SERVICE



#### ROAD MAINTENANCE Excluding Highways



#### UTILITIES Water, Wastewater



#### WASTE & RECYCLING MANAGEMENT FACILITIES & SERVICES

## PROVINCIAL GOVERNMENT

### Alberta



#### EMERGENCIES AND DISASTER RELIEF



#### ENVIRONMENT Fish and Wildlife, Species at Risk



#### HIGHWAYS



#### HOSPITALS



#### JUSTICE



#### PROPERTY TAXES

Provincial Portion for Education, Seniors Foundation, and Designated Industrial Properties, Registries and Land Titles



#### PROVINCIAL PARKS & CAMPGROUNDS



#### PUBLIC HEALTH

Alberta Health Services



#### SCHOOLS

Post-Secondary Education, Children's Services



#### SOCIAL SERVICES

Children's Services, Seniors, Community, and Social Services



#### SUPPORTS FOR EMPLOYEES & EMPLOYERS

## FEDERAL GOVERNMENT

### Canada



#### AIRLINES & AIRPORTS

International Trade, International Travel, Borders



#### BANKING Mortgages



#### CHILD BENEFIT SOCIAL SERVICES



#### EMPLOYMENT INSURANCE



#### FISHERIES AND OCEANS



#### INCOME TAX



#### NATIONAL DEFENSE RCMP



#### NATIONAL PARKS



#### POSTAL SERVICE



#### RAIL



#### STUDENT LOANS



## STAY IN TOUCH

### Alerts

[www.countygp.ab.ca/alerts](http://www.countygp.ab.ca/alerts)

### News

[www.countygp.ab.ca/subscribe](http://www.countygp.ab.ca/subscribe)

### Provide Feedback

[www.countygp.ab.ca/engage](http://www.countygp.ab.ca/engage)

### Events Calendar

[www.countygp.ab.ca/events](http://www.countygp.ab.ca/events)

### Administration Building

P 780-532-9722

F 780-539-9880

### Community Services Building

P 780-532-9727

F 780-567-5576

[www.countygp.ab.ca](http://www.countygp.ab.ca)

f in 