



OF THE

MAKING SENSE 2026 BUDGET



READING YOUR PROPERTY TAX NOTICE

Your property tax notice includes more than municipal taxes—it also includes taxes for education and seniors lodging. The Province of Alberta and the Grande Spirit Foundation determine the financial amounts, and the County is required to collect and send these funds to each of them, respectively.

County of Grande Prairie No. 1
10001 - 84 Avenue
Clairmont, AB T8X 5B2

2026 PROPERTY ASSESSMENT AND TAX NOTICE
DUE DATE: June 30, 2026

Date Mailed: **May 7, 2026**
Notice of Assessment Date: **May 15, 2026**
Final Date of Complaint: **July 14, 2026**

ASSESSMENT CLASS	LAND	IMPR	OTHER	NET
32 - RESIDENTIAL MARKET VALUE	127,500	382,500	0	510,000
Assessment Totals	127,500	382,500	0	510,000
Separate School Support				510,000
% Public School Support				100%
Provincial School Taxes are collected on behalf of the Province of Alberta. The Tax rate is determined by the Province.				510,000

DESCRIPTION	PERIOD OF TAXATION	RATE	AMOUNT
GENERAL MUNICIPAL RESIDENTIAL	Jan 1, 2026 to Dec 31, 2026	4.41833	2,253.35
GRANDE SPIRIT FOUNDATION	Jan 1, 2026 to Dec 31, 2026	0.10471	53.40
PROVINCIAL SCHOOL RESIDENTIAL	Jan 1, 2026 to Dec 31, 2026	2.74569	1,400.30
TOTAL CURRENT TAX LEVIES			3,707.05

 MUNICIPAL TAXES County of Grande Prairie \$2,253.35 GOES TO YOUR COUNTY = 60.79%	 SENIORS' LODGING Grande Spirit Foundation \$53.40 GOES TO SENIORS' HOUSING = 1.44%	 EDUCATION TAX Province of Alberta \$1,400.30 GOES TO EDUCATION = 37.77%
--	--	---

*Based on the above sample notice

DUE DATE: JUNE 30, 2026

AMOUNT DUE
\$3,707.05

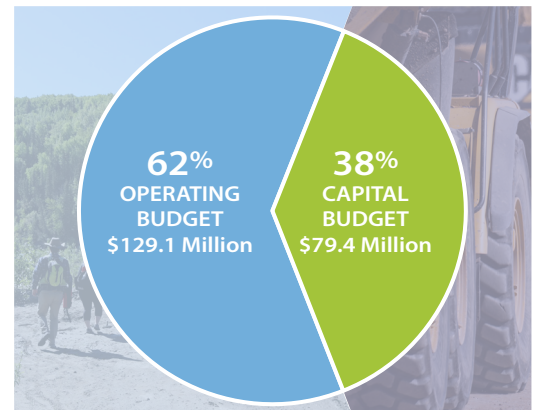
TO THE PROVINCE FOR RCMP COSTS	\$42.81 = 1.9%
---------------------------------------	-----------------------

BUDGET BASICS

Every program and service in the County has a cost. Each year, Council makes financial decisions to provide money for each program and service in the Operating and Capital budgets. **The total budget for 2026 is \$208.5 million.**

OPERATING BUDGET: The County's operating budget is for day-to-day costs to keep everything running smoothly. This includes enforcement and fire services, parks and recreation facilities, road maintenance, including snow removal, and waste management.

CAPITAL BUDGET: The County's capital budget funds major assets, including machinery and equipment, vehicles, buildings, major road construction projects, and debt repayments.



WHERE THE MONEY COMES FROM

Funding for the County's programs and services comes from several sources, with most coming from property taxes.

52.4%
MUNICIPAL TAXES
Your Property Taxes

28.4%
TRANSFER FROM RESERVES*
Savings Set Aside For Specific Projects

7.9%
GRANT REVENUE
From Other Orders of Government

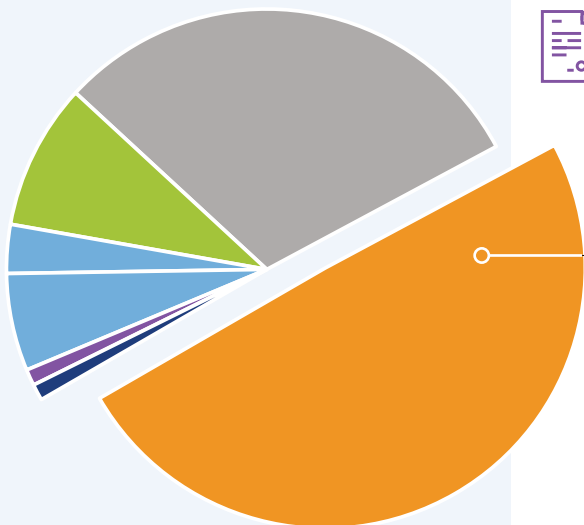
2.2%
DEBT FUNDING

5.9%
USER FEES, SALE OF GOODS,
LEVIES & MISC. REVENUES
For Example, Equipment Rental,
Animal Reclaim, Garbage Collection

1.2%
RETURN ON INVESTMENT
Earnings On County Investments

2.0%
LEVIES, FINES & PENALTIES
For Example, Development Levies

*A portion of municipal taxes are put into reserve accounts, similar to savings accounts. Money is transferred from reserves when needed for critical capital and operational projects. Reserve accounts provide additional funding for the County as interest builds up on a large portion of the balance.



MUNICIPAL TAX DOLLARS AT WORK

Wondering how much of our sample residential property tax bill went towards County operational and capital expenses? The municipal tax portion of \$2,253.35 is broken down as follows:

TRANSPORTATION NETWORK



\$1,187.52

- 31.6% Road Construction & Bridge Program
- 12.1% Road Maintenance, Signage & Construction
- 7.6% Fleet & Maintenance
- 1.4% Transportation & Utilities Administration

COMMUNITY, RECREATION, CULTURE & SAFETY



\$549.82

- 1.9% Regional Enforcement Services
- 1.9% Provincial Policing
- 6.9% Regional Fire Services
- 0.1% Emergency Preparedness
- 7.0% Recreation and Culture
- 2.7% Community Grants
- 1.9% Agriculture Services
- 2.0% Family and Community Support Services

RUNNING THE MUNICIPALITY



\$295.18

- 13.1% Assessment, Asset Management, Communications & Marketing, County Manager's Office, Economic Development, Financial Services, People & Organizational Development, Information Technology, Insurance & Risk Management, Legislative Services, Procurement

WATER AND WASTE

Recycle & Waste Management;
Water Supply & Distribution, and
Wastewater Collection & Treatment



\$173.51

- 3.7% Water Supply And Distribution
- 1.6% Recycling & Waste Management Facilities & Services
- 2.4% Wastewater Collection & Treatment

PLANNING & DEVELOPMENT



\$47.32

- 2.1% Land Use, Planning, Zoning & Development

SOURCE OF MUNICIPAL TAX PORTION

- 29.70% Designated Industrial Properties
- 29.20% Linear
- 22.31% Commercial Property
- 16.79% Residential Property
- 0.85% Farmland Property
- 0.83% Industrial Property
- 0.26% Machinery And Equipment
- 0.05% Grants In Lieu
- 0.01% Minimum Tax

