

COUNTY CONNECTIONS



FALL 2017

Municipal Elections Pg. 1-3
Farewell to Brock Pg. 4
Guide to County Living Pg. 5
GP Regional Animal Care Facility Pg. 6

Landscaping Recognition Program Pg. 7
Gearing up for Winter Pg. 8
New Postal Code Pg. 9
Recycling Pg. 11-13

Whispering Ridge Playschool Pg. 13
FCSS Programs Pg. 14-15
Kind Heart Awards Pg. 16
Recreation Programs Pg. 17

Nominate a Farm Family Pg. 18
Clubroot Infestation Pg. 19
Random Act of Kindness Pg. 20
Sportsplex & Dinosaur Museum Pg. 22-23

County of Grande Prairie Municipal Election October 16

YOUR VOICE MATTERS – MAKE SURE YOU VOTE!

The County of Grande Prairie encourages residents to make sure you vote in the upcoming municipal election. This is your opportunity to influence the Council that makes decisions about policies and programs that impact our communities and the lives of everyone who live in the County.

With only 25 per cent of eligible voters in the County of Grande Prairie casting a ballot during the 2013 municipal election, the County hopes to see a much larger voter turnout this October 16. Advanced Polls take place October 7 and 14.

Members of Council are responsible to set the direction for the County, and make critical decisions on matters including tax rates; operational and capital spending; road maintenance; sports and recreation programming; garbage and recycling services; and bylaws for issues such as animal control, regional enforcement services, public works projects and community planning and development. These issues are a priority for our residents.

Keep in mind that voting only takes a few minutes and is the easiest way to have an influence on those who will lead the County and play a large part in shaping our future direction.

Visit www.countygp.ab.ca/election, or contact Returning Officer Sheryle Runhart at 780-532-9722 to get all of your County election information.

ADVANCED POLLS INFORMATION SATURDAY, OCTOBER 7 AND 14

Two Advanced Polling Days Make it Easier to Vote

County Council sets direction about our communities and your future, and we need your voice in selecting the people who will make those decisions. Making sure you set time aside to vote is the best way to have an impact on what your future looks like.



Dates and Time

Advanced Polls – open October 7 and 14
10:00 a.m. - 2:00 p.m.

Polling Stations and Locations

Albright Community Hall– Divisions 5, 6, and 7
Saskatoon Lake Community Hall – Divisions 3 and 4
Sexsmith Civic Centre – Divisions 2 and 9
County of Grande Prairie Public Works Building - All Divisions

Identification Required to Vote

Bring one piece of identification issued by the Canadian Government (federal, provincial or local), or an agency of that government that contains a photo of the elector and his/her name and current address (see the "Voter Information Section" or the election page on our website for more details).

Questions?

If you have questions, contact Returning Officer Sheryle Runhart at 780-532-9722 or visit www.countygp.ab.ca/election.

County of Grande Prairie Municipal Election October 16th Your VOTE. Your VOICE.

MUNICIPAL ELECTION DAY INFORMATION - MONDAY, OCTOBER 16

Voting Stations and Times

The decisions made by County Council impact your everyday life. You can make a difference and help shape the direction of your community with one simple act: Please take a few minutes and vote!

Dates and Time

Election Day – Monday, October 16
10:00 a.m. – 8:00 p.m.

Identification Required to Vote

Bring one piece of identification issued by the Canadian Government (federal, provincial or local), or an agency of that government that contains a photo of the elector and his/her name and current address (see the “Voter Information Section” or the election page on our website for more details).



Polling Stations and Locations

DIVISION	LOCATION
Division 2	Grande Prairie Alliance Church Whispering Ridge
Division 2	Clairmont Seniors Centre
Division 2 & 9	Sexsmith Civic Centre
Division 3	Five Mile Hall
Division 3 & 4	Peace Wapiti School District Office
Division 4	Dimsdale Hall
Division 4 & 5	Wembley Community Hall
Division 5	Albright Community Hall
Division 5	Saskatoon Lake Community Hall
Division 5 & 6	Beaverlodge Community Centre
Division 6	Hinton Trail Community Hall
Division 6 & 7	Goodfare Community Hall
Division 7	Hythe Golden Age Centre
Division 7	Demmitt Hall
Division 7	Lymburn Hall
Division 9	Teepee Creek Hall
Division 9	Webster Community Hall

Lakeview Supportive Housing for Seniors in Clairmont is also a voting station on Election Day for seniors living in the residence only.

Not sure what electoral division you are in or where the above voting stations are located? Find out by visiting our election page at www.countygp.ab.ca/election or contact Returning Officer Sheryle Runhart at 780-532-9722.

VOTER INFORMATION ELIGIBILITY AND IDENTIFICATION

Date

2017 Municipal Election Day is Monday, October 16
Advanced Polls Saturday, October 7 and 14

Eligibility Requirements

You must be at least 18 years old, a Canadian citizen, have resided in Alberta for six months immediately prior to election day, have a residence in the area on election day, and vote at the station for the subdivision in which your residence is located on election day.

Required ID

One piece of government-issued ID with your photograph, current address, full surname and given name, OR one piece of ID that establishes your current address, including:

- Bank/credit card statement or personal cheque
- Correspondence issued by a school, college or university
- Government cheque or cheque stub
- Income/property tax assessment notice
- Insurance policy or coverage card
- Letter from a public curator, public guardian or public trustee
- Pension Plan statement of benefits, contributions or participation
- Residential lease or mortgage statement
- Statement of government benefits: (employment insurance, old-age security, social assistance, disability support, or child tax benefit)
- Utility bill: (telephone, public utilities commission, television, hydro, gas or water)
- Vehicle ownership or insurance certificate
- A letter or form confirming that you live at the stated address, signed by an authorized representative of a commercial property management company, a correctional institution, a First Nations band or reserve, a post-secondary institution, a facility that provides services to the homeless, or a supportive living facility or treatment centre

Visit the County's webpage
www.countygp.ab.ca/election for all of
your election information.

VOTING FOR THOSE UNABLE TO LEAVE THEIR HOMES

Voting for Incapacitated Residents

The County of Grande Prairie is making voting in the 2017 Municipal Election easier for residents who are physically unable to leave their homes.

- Incapacitated voters can request to have two deputies come to their home to register their vote.
- Incapacitated voting must happen during Advanced Poll dates and times: October 7 and 14 from 10:00 a.m. until 2:00 p.m.
- To make arrangements, contact Returning Officer Sheryle Runhart at **780-532-9722**.

CANDIDATES

There are two divisions that have been acclaimed:

Division 1 Harold Bulford (Incumbent)
Division 8 Karen Rosvold (Incumbent)

DIVISION	CANDIDATES
Division 2	Daryl Beeston (Incumbent), Don Streeper, Thomas Walter Tharp
Division 3	Leanne Beaupre (Incumbent), Barry Yaehne
Division 4	Maurissa Hietland, Bernie Smashnuk, Ross Sutherland (Incumbent)
Division 5	Kevin Gingles, Robert Hill, Bob Marshall (Incumbent)
Division 6	Peter Harris (Incumbent), Ashley Heggelund, Kathleen Jean Longson
Division 7	Arthur Amendt, Linda Dianne Waddy
Division 9	Dwayne A. Badry, Corey Beck (Incumbent)

Not sure what electoral division you live and vote in? Visit www.countygp.ab.ca/election to find out what division you live in and your nearest polling station to place your vote!

Candidate contact information is also listed at www.countygp.ab.ca/election.

VIEW COUNTY ELECTION RESULTS LIVE ON OUR WEBSITE

On October 16, County of Grande Prairie election results will be live on our website at www.countygp.ab.ca/election.

County Bids Farewell to long-time Councillor Brock Smith



With 28 years of commitment to the County of Grande Prairie as the councillor for Division 7 in the Hythe region, Brock Smith has been a notable absence during this election campaign. Smith announced his retirement from County Council earlier this year. He has seven terms as a County Councillor under his belt.

Smith, who says it's time to retire and let others bring their knowledge and energies to the table, shared some important accomplishments of County Council during his years in municipal government. He noted the success of the physician recruitment committee in bringing physicians to the County (Smith has chaired the committee since its inception in 2012), as well as the importance of the County's investment of fire equipment into Hythe and other communities within the County.

It is with great respect that Smith talked about the solid volunteer base in the Hythe area. He discussed the County's commitment to working with local citizens to support their efforts in a number of ways, including a combined effort

from the County, Hythe, the Province, energy companies and private donors to come up with \$1.2 million in funding for the arena upgrade and make repairs to local schools. He also notes the creation of a subdivision policy, which he said has helped create a vibrant community environment all throughout the County.

Smith also discussed the improvements to transportation infrastructure he has seen over the years around the County.

"I first ran for Council because of the lack of paved roads in Division 7," said Smith. "None of the secondary roads were paved. Division 7 has quite a few paved roads now – that's pretty important for the people who live here and for business."

Asked if he had any advice for those who are running for County of Grande Prairie Council, Smith said: "County councillors need to be committed to serve their ratepayers, to work for them and to work together with our municipal neighbours."

He added: "As a County councillor, you are not there to decide what's best for the ratepayer. They know what's best for their communities. Your role is to listen to them and work with them."

With the future of the region still a priority for Smith, he'll be looking for other ways to keep his fingers involved in politics and in initiatives that benefit the community. "The County's safe, there's plenty of employment and education opportunities, and families have good access to healthcare."

"It really is a great place to live."



Guide to County Living

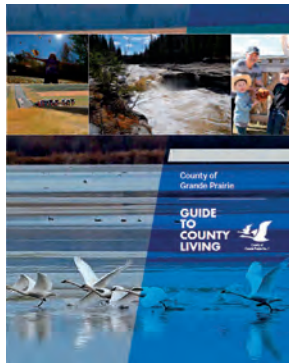
Everything you need to know about the County of Grande Prairie – all in one place!

Did you ever wonder about what is accepted at our recycling and waste management facilities? Or maybe you are interested in learning about building permits, County campgrounds, or our bylaws for pet ownership. The recently published Guide to County Living contains a huge amount of helpful information about what life is like in the County, and it answers all of these questions plus so much more!

The Guide is a must-read for all residents, even those of us who are lucky enough to have lived in the County for a long time. New residents and those considering making the move here will also find the Guide particularly useful as it provides answers to all of those questions that inevitably come up after relocating to a new area.

Specific topics that are covered in the Guide include:

- Governing in the County of Grande Prairie
- Education
- Careers and Employment
- Leisure and Recreation
- Libraries
- Staying Informed in the County of Grande Prairie
- Living in a Rural Community
- Weed Control
- Emergency Preparedness
- Roads
- Health and Emergency Services
- Family and Community Support Services
- Senior Citizens
- Animal Control and Bylaws
- Housing in the County of Grande Prairie
- Home-based Businesses
- Recycling and Waste Management Services



To learn everything you need to know about life in the County of Grande Prairie, download the Guide www.countygp.ab.ca/guide. To get a print copy, visit the County's Administration Building located at 10001 – 84 Avenue in Clairmont or stop by Grande Prairie Regional Tourism Office in Centre 2000 in Grande Prairie.



In a fire, seconds count. Seconds can mean the difference between escaping safely from a fire or lives ending in tragedy.

This year's Fire Prevention Week theme: "*Every Second Counts: Plan 2 Ways Out!*" reminds us why we need to have an escape plan.

Escape Plan for Every Home – Make Your Plan Today!

1. Draw a map of your home with all members of your household, marking two exits from each room and a path to the outside from each exit.
2. Practice your home fire drill twice a year. Conduct one at night and one during the day with everyone in your home, and practice using different ways out.
3. Teach children how to escape on their own in case you can't help them.
4. Make sure the number of your home is clearly marked and easy for the fire department to find.
5. Close doors behind you as you leave – this may slow the spread of smoke, heat, and fire.
6. Once outside, stay outside. Never go back inside a burning building.

An escape plan takes very little time but may be the difference between life and death.

For other tips to keep your family safe year-round visit: www.countygp.ab.ca/fireprevention

FIRE PREVENTION WEEK

OCTOBER 8–14, 2017



countygp.ab.ca

Humane and safe animal care remains a top priority for the County and City of Grande Prairie



When the Grande Prairie and District SPCA (GPSPCA) recently announced they were permanently closing their doors, the County and City of Grande Prairie did not hesitate to step up and continue temporarily delivering the animal care plan for our region.

Although municipalities are generally only responsible for enforcing animal control legislation and for running regional animal pounds, the County and City wanted to ensure there was a safe and humane animal care plan in place and that animal adoptions and shelter services remained available to residents.



The result was the decision to keep the Grande Prairie Regional Animal Care Facility open (GPRACF) until a permanent humane provider can be found.

The GPRACF has a fulltime Registered Veterinary Tech (RVT) on staff and every animal that is adopted from the Facility has been saved from euthanization, and is vaccinated, microchipped, and vet examined.

In addition, every adopted pet comes with a 50 per cent off voucher for spaying or neutering services. Although support for spaying and neutering is generally not provided by municipalities, the County believes that these vouchers are essential for helping control the unwanted pet population. The GPRACF also helps control the unwanted animal population by partnering with outside agencies who spay and neuter each animal they take in, including Petland, Bear Creek Animal Clinic and Grande Prairie Regional College, and the Edmonton Humane Society.



The County and City does not have any information about when a permanent humane provider will begin operating in our region – but wants residents to know that the GPRACF is a temporary arrangement and that as information about a permanent provider becomes known, it will be passed on to residents.

In the meantime, questions about the animal care plan and the GPRACF can be directed to the GPRACF at regionalpound@countygp.ab.ca or by calling 780-830-0199.

Brandt Receives 2017 Landscaping Recognition Award of Excellence

Brandt has been selected as the winner of the County's Landscape Recognition Program competition. Brandt was recognized for the attention they have taken to develop an attractive outdoor space that not only greets customers at their Clairmont location, but also impacts the atmosphere in their neighbourhood, making it more inviting and welcoming.

The friendly landscaping competition took place throughout the summer for businesses operating in industrial park areas within the County of Grande Prairie. Businesses were judged by County representatives on a number of factors including their use of landscaping design principles from the County's Land Use Bylaw, effective year-round maintenance, and the use of native vegetation.

"Brandt's attention to landscaping has certainly enhanced the profile and image of their business since they moved in to the building over 10 years ago," said Nick Lapp, Planning and Development Services Director. "But there's further benefits in that it boosts the profile of the area where they are located, and creates a professional environment that reflects well on the entire neighbourhood."

He added: "Although Brandt won the overall competition, all participants benefited from the Program. Landscaping enhances property values; creates a healthier and cleaner work environment for employees and customers; improves the character of the area; respects environmental values; and is self-sustaining, low maintenance and reduces overall business costs."

Brandt Tractor is the Western Canadian dealer for John Deere construction and forestry equipment, John Deere Commercial Worksite Products, Ditchwitch, Bomag compaction, Topcon Survey and Machine Control Products and the new line of Brandt Trailers. Branch Manager Kevin Lavallee took some time to talk to the County about the benefits their company is seeing as a result of their landscaped outdoor space.

COUNTY: Have you found that your landscaping has influenced your employee engagement and satisfaction?

KEVIN: We have had tons of compliments that the property is

very park-like. Many employees go out and eat their lunch and take their breaks. It comes down to pride. It's really a reflection on our values, which is taking pride in everything we do.

COUNTY: What kind of feedback do you get from your clients?

KEVIN: We get resounding comments, very often by people driving by and saying they love the building and landscaping, and wondering what it looks like inside. We are extremely proud of our property.

COUNTY: Do you think that all of the hard work put into your landscaping has increased your lot value through curb appeal?

KEVIN: Absolutely. It also really reflects on the quality of service and products we provide.

COUNTY: You hired a landscaping company to develop and maintain your yard. Has the landscaping brought about any other benefits?

KEVIN: I think the end product reflects the quality of employees that we attract, who take pride and ownership in everything that they do. I would equate it to walking into any workspace: if the space is a mess and disorganized – you can expect the same results are far as the work goes. We take pride in keeping our entire building neat and tidy – resulting in more efficient and timely results.

The County thanks everyone who participated. For more information about the Landscaping Recognition Program and the all businesses who participated, go to www.countygp.ab.ca/bestlandscaping.



countygp.ab.ca

Landowners Invited to Participate in Program Aimed at Improving Roads

INVITATION TO LANDOWNERS

The County of Grande Prairie invites landowners to participate in a program that will allow the Spot Construction Crew to brush roadsides during the fall and winter season. Brushing will open our roadways to the wind and the sun to promote drying of the roads and ditches.

WHAT IS BRUSHING AND HOW DOES IT BENEFIT THE PUBLIC?

Brushing is assessing roadways for overgrown trees that impede traffic and visibility, and create safety risks. Trees are part of the landowner's property but on the County's right-of-way.

WHAT IS REQUIRED FROM LANDOWNERS?

Residents must be willing to allow the Public Works department to clear five metres on their side of the road right-of-way. The County may need to access landowner property to clear trees.

INTERESTED IN PARTICIPATING?

Contact the Public Works department at brushing@countygp.ab.ca or by phone at 780-532-7393. Based on the level of interest from residents in seeing this program move forward, the Public Works department may begin planning and implementing this program in the winter of 2017/2018.

County Gearing up for Winter Weather

With the impending arrival of winter, the County of Grande Prairie Public Works department is preparing for another busy season clearing snow and ice off of nearly 3,200 kilometers of County roads.

We try to clear all rural roads within five days following a significant snowfall. Multiple snowfall events may alter the snow clearing cycle and require extended hours or days to complete.

Residents can greatly assist with snow removal in the following ways:

- During periods of heavy snowfall or other extreme weather conditions, please be patient as crews work to clear snow from your area as quickly as possible.
- Use extreme caution when approaching snow removal equipment, and reduce your speed around plows, graders, and other equipment.
- Watch for snow removal signs in your neighbourhood. Ensure your vehicles are not parked on the roadside while crews are at work clearing your street.
- Reminder - it is illegal to push snow onto or across County roadways. If windrows freeze, they can cause accidents, or damage County equipment and private vehicles.

If you have questions or have concerns about improper snow removal, contact Regional Enforcement Services at 780-532-9727, enforcementservices@countygp.ab.ca or use the online reporting system at www.countygp.ab.ca/occurrencereport.

PROVINCIAL HIGHWAYS

All primary and secondary highways are the responsibility of and maintained by Alberta Transportation. If you have questions or concerns about maintenance of these roads, contact Alberta Transportation at 780-538-5310. For updated highway conditions and reports, please call 5-1-1 or visit 511.alberta.ca.

TRAIL CLEARING

The County's Parks & Recreation department is responsible for snow removal on County trails. For more information visit www.countygp.ab.ca/trails or contact Parks & Recreation at 780-532-9727.

For more information, visit www.countygp.ab.ca/roadmaintenance or contact the Public Works department at 780-532-7393.



New Postal Code for County of Grande Prairie Offices and Areas of Clairmont

.....

The County of Grande Prairie now has a new postal code. Formerly T0H 0W0 is now T8X 5B2. If you are sending mail to the County, please use the following address:

10001 – 84 Avenue, Clairmont, AB T8X 5B2

Addresses in the Hamlet of Clairmont with a postal code starting with T0H have also been changed to T8X, effective September 18, 2017. Canada Post has sent notification letters to all residents affected in August 2017, which also included Change of Address cards to notify mailers. Canada Post will continue to deliver mail bearing your old postal for a period of one year starting on September 18, 2017.

Please note that this is a Canada Post initiative. Canada Post has made these changes to its delivery network so that they can continue to provide customers with the efficient, reliable service.

If you require additional information, please contact David Kruger, Canada Post Delivery Services at david.kruger@canadapost.ca or 780-944-3333.

Dust Control Program

Does the road in front of your residence, rural subdivision, or business require Dust Control? The County has a program for that! In order to have dust suppressants applied to your gravel road, you must apply.

Starting on January 2, 2017, interested candidates will be able to fill out application forms online at www.countygp.ab.ca/dustcontrol, or in person at the County Public Works Building at 10001-84 Avenue Clairmont, AB. Interested candidates have until April 30, 2018 to apply.

For more information, please visit www.countygp.ab.ca/dustcontrol or contact the Public Works department at 780-532-7393.



County of Grande Prairie Recycling and Waste Management Facilities Holiday Hours

.....

The County of Grande Prairie wishes to inform County residents that the County landfill/transfer station holiday hours between December 23, 2017 and January 1, 2018 are as follows:

CLAIRMONT CENTRE FOR RECYCLING AND WASTE MANAGEMENT

OPEN: December 23 from 8 a.m. to 6 p.m.

December 26 – 30 from 8 a.m. to 6 p.m.

CLOSED: December 24, 25 & January 1

WEST COUNTY REGIONAL LANDFILL

OPEN: December 23 from 10 a.m. to 6 p.m.

December 27 – 30 from 10 a.m. to 6 p.m.

CLOSED: December 24 – 26 & January 1

DEMMITT TRANSFER STATION

OPEN: December 20 & 23 from 10 a.m. to 6 p.m.

December 27 & 30 from 10 a.m. to 6 p.m.

CLOSED: December 25 & January 1

ELMWORTH TRANSFER STATION

OPEN: December 20 & 23 from 10 a.m. to 6 p.m.

December 27 & 30 from 10 a.m. to 6 p.m.

CLOSED: December 25 & January 1

TEEPEE CREEK TRANSFER STATION

OPEN: December 23 from 10 a.m. to 6 p.m.

December 26 & 28 from 12 p.m. to 6 p.m.

December 30 from 10 a.m. to 6 p.m.

CLOSED: December 25 & January 1

Regular hours of operation will resume January 2, 2018.

PREPARE FOR A TRIP TO THE LANDFILL

The following tips will help ensure that your trip to the landfill is as easy as possible.

1. Prepare loose household garbage in a bag, bin or bundle.
2. Check the County of Grande Prairie website or phone the Clairmont Centre for Recycling and Waste Management for a list of acceptable wastes, and potential tipping fees for certain materials.
3. Load your vehicle with metals, wood, tires, e-waste, propane tanks, batteries, appliances and separate from household garbage. This makes off-loading less time consuming as recyclables are already separated prior to entering the landfill.
4. Tarp and secure your load to help control litter and avoid a fine and/or an unsecured load fee.
5. Go to the landfill, follow posted signage and procedures, and follow the directions of the scale house attendant.
6. Remember: if you are unsure of where to dump something, make sure to ask a landfill attendant.
7. County of Grande Prairie residents require a landfill access tag number to the Clairmont Centre for Recycling and Waste Management to avoid tipping fees.

For more information on the County's Recycling and Waste Management facilities and programs, visit www.countygp.ab.ca/recyclingprograms or call the Landfill Information Line at 780-513-3967.

County Office Holiday Hours

The County Offices will be closed on Monday, December 25 and Tuesday, December 26, 2017 for Christmas break as well as on New Year's Day on Monday, January 1, 2018. All essential services will be maintained during office closures. Regular office hours will resume on Tuesday, January 2, 2018.

If you have any questions, please contact **780-532-9722**.

What Can I Recycle?

The County's various recycle and waste management facilities accept a number of items for recycle. Be sure to keep the following materials separate from your regular trash and bring them with you on your next trip to our facilities.

	CLAIRMONT CENTRE FOR RECYCLING & WASTE MANAGEMENT	WEST GRANDE PRAIRIE REGIONAL LANDFILL	DEMMITT TRANSFER STATION	TEEPEE CREEK TRANSFER STATION	ELMSWORTH TRANSFER STATION
Electronics & Appliances	✓	✓	✓	✓	✓
Propane Tanks (Under 100lb)	✓	✓	✓	✓	✓
Refundable Bottles	✓	✓	✓	✓	✓
Cardboard & Boxboard	✓	✓			
Vehicle Batteries	✓	✓	✓	✓	✓
Fluorescent Bulbs	✓	✓			
Pesticide Jugs	✓	✓		✓	✓
Tires	✓	✓	✓	✓	✓
Wood	✓	✓	✓	✓	✓
Metal	✓	✓	✓	✓	✓
Clothing	✓				
Agricultural Plastics	✓	✓			
Rechargeable Batteries	✓	✓	✓	✓	✓
Paper, cardboard, tin, & glass	✓	✓			
Drop n Swap program	✓				
Concrete	✓	✓			
Used Oil	✓	✓			
Household Hazardous Waste & Paint	✓	✓			

Additionally, there are 14 recycling bins located throughout the County for the public to properly dispose of paper, cardboard, tin and glass.

For more information including the locations and hours of the recycle and waste management facilities, visit www.countygp.ab.ca/recycleprograms.

Keep Refundable Bottles out of the Trash

Give them to the County's Bottle Donation Program Instead

.....

HAVE YOUR UNWANTED ELECTRONICS RECYCLED

Do you have any electronics taking up space in your home that you would like to get rid of?

Bring them with you on your next trip to the Clairmont Centre for Recycling and Waste Management or the West Grande Prairie Regional Landfill to be recycled!

Both locations accept electric appliances including computers, printers, microwaves, toasters, curling irons, coffee makers, kettles, power tools and many other items with a cord.

For more information on the County's electronics recycling program, visit www.countygp.ab.ca/recycleprograms or call the Clairmont Centre for Recycling and Waste Management at 780-567-4194.



Are you throwing bottles in the trash instead of turning them in for cash at the depot or donating them? Look no further, the County has a bottle donation program that will gladly accept your bottles. This program helps support several non-profit and charitable organizations throughout the County.

Simply travelling that extra mile or two and dropping off your refundable bottles at any of the County's five Recycling and Waste Management facilities will greatly benefit your community and the environment. Proceeds made from these refundable bottles you drop off are donated to various eligible organizations within the County.

"This year we have given out a total of \$6,500 to several local non-profit organizations," said Jennifer Besinger Technical Services Manager. "We are aiming to surpass the contribution amount from last year so we can share these proceeds with even more groups."

The groups that benefitted from the bottle donation program include the John Howard Society of Grande Prairie, Clairmont Participarent, Clairmont Minor Hockey Association, Grande Prairie Ski Patrol Association, Grande Prairie 4H Achievers, Sexsmith Secondary School and the Sexsmith Playschool.

As well, if you are involved in a local non-profit organization and are looking to raise funds, the County strongly encourages your group to apply. Application forms can be picked up at the Clairmont Centre for Recycling and Waste Management (CCRWM) or found on County's website at www.countygp.ab.ca/bottleprogram. Completed application forms can be submitted to the CCRWM or emailed to bottleprogram@countygp.ab.ca.

For more information, please contact the Clairmont Centre for Recycling and Waste Management at 780-567-4194.



Bottle trailer to drop your donations off in is located at the Clairmont Centre for Recycling and Waste Management.



Drop your bottles in these receptacles that are located at the Demmitt, Elmworth and Teepee Creek Transfer Stations. Proceeds from these bottles go towards community groups in their respective communities.

Recycling Trailer Available for Use for Events



Are you hosting an event over the fall or winter season? Book the County's recycling trailer for your event to encourage you and the guests at your event to reduce waste by simply placing items that can be recycled into the labelled receptacles on the trailer. The trailer accepts cardboard, paper, bottles, cans, plastic and tin. There is no fee to book the trailer.

Contact the Public Works department at 780-532-7393 to book the trailer and we will take care of delivering and picking up the trailer.

Changes coming in 2018 for those who receive Curbside Waste Collection Services



Starting in the New Year, all residents who receive curbside waste collection services will be receiving a free bin to place their garbage in and in front of their home in time for pickup.

Stay tuned to www.countygp.ab.ca and your upcoming utility bill for more information including waste disposal instructions.



Whispering Ridge Playschool Opening this January



The County's Family and Community Support Services (FCSS) department is excited to announce the upcoming opening of the Whispering Ridge Playschool in January 2018. County FCSS will be accepting registrations starting in November.

Stay tuned to www.countygp.ab.ca/fcss for playschool dates and times and registration contact information.



Artist Rendering

DID YOU KNOW?

The County contributed \$483,000 to build the Whispering Ridge Playschool as a part of the Whispering Ridge School. County FCSS employees will be operating the new facility.



countygp.ab.ca

FCSS

Upcoming Courses and Programs

St. John Ambulance Babysitting Basics Course

This course is ideal for youth ages 11 and up. The course enhances awareness and safety by teaching responsible babysitting, and helping to develop skills to cope with common emergencies. Cost: \$50. Lunch not included.

UPCOMING COURSES

- Saturday, October 21, 2017
9 a.m. – 4 p.m. at the Wellington Resource Centre
- Saturday, November 10, 2017
9 a.m. – 4 p.m. at the Bezanson School

Register at wrc@countyp.ab.ca or 780-567-2843 by the Monday prior to each course date.

Home Alone Safely

This program runs November 18, 2017 from 9 a.m. to 4 p.m. at the Clairmont - Wellington Resource Centre. The program will provide self-care information for children home alone before or after school or occasionally for short periods.

Call 780-567-2843 to register.

Home Alone Course

Runs December 2, 2017 from 10 a.m. to 4 p.m. at the Bezanson School. This course is ideal for youth ages 9-11, teaching them self-care and safety skills that build confidence to stay home alone for short periods of time. Cost: \$20. Lunch not included. To register email wrc@countyp.ab.ca or call 780-567-2843 by the Monday prior to date.

Parent & Tots Time

Bring your child out for crafts, games, play and story time, sing along and to make friends every Tuesday

from 10 a.m. to noon at the Bezanson Community Hall every Thursday from 10 a.m. to noon at the Wellington Resource Centre.

Admission is free, donations are welcome. Parent & Tots Time is ideal for parents and their children ages 0 to 6. For more information, call 780-567-2843.

Babies' Best Start

Program runs every second and third Monday of each month (excluding holidays) from 10 a.m. to 1 p.m. at the Wellington Resource Centre. The program is available for pregnant women and parents of all ages with a focus on promoting healthy pregnancies and healthy child development; and empowers expecting or current mothers to make healthy lifestyle choices by offering nutritional counselling, one-on-one support, peer support, education, breastfeeding information and community connections.

For more information call 780-532-5766 or email bbofficegp@gmail.com

Seniors Walk and Talk

This program runs every Thursday morning from 8:30 a.m. to 11:30 a.m. starting October 26, 2017 through April 26, 2018 at the Crosslink County Sportsplex. Take a walk, jog or run around the 240 meter Happy Trails Track, meet and greet other seniors, and enjoy a coffee. Admission is free.

Immunization Clinic

Alberta Health Services conducts infant immunizations at the Wellington Resource Centre the second Tuesday of each month.

Call 780-513-7500 to schedule immunizations for your infant.



For up-to-date information about FCSS programs, visit www.countyp.ab.ca/fcss

Contact the Wellington Resource Centre at

780.567.2843  Wellington Resource Centre

FCSS Home Support Program Assisting County Residents for 50 years!

.....



As the County FCSS program celebrates 50 years of service to County residents, we want to recognize our Home Support Program as one of our inaugural services. Although the program has grown tremendously over the last 50 years the concept of providing practical in home support to families and individuals experiencing disruptions of normal family routine has not changed. Our Home Support workers are trained, skilled workers who provide a high standard of confidential and non-discriminatory care, and are recruited for their caring, compassionate nature.

Home Support workers can help in situations such as:

- Pre or post-natal home care
- Supplemental care for seniors
- Pre or post-hospitalization
- Home management assistance
- Emotional stress
- Long and short-term illness

Home Support workers will:

- Perform light housekeeping
- Provide meal preparation
- Provide home management and budgeting
- Drive clients to appointments and shopping
- Provide respite for caregivers of ill or special needs people
- Provide companionship

The fee for these services is based on a sliding scale, and is determined by income, and there is no charge for an assessment. We serve County residents including all hamlets, as well as the towns of Beaverlodge and Wembley.

The County's Home Support Program is a partnership between the County and the provincial FCSS. Our program also provides information and referral to other programs and agencies in the Grande Prairie area.

To arrange a home assessment, contact FCSS at 780-532-9727 or by email at fcss@countyp.ab.ca.

Kind Heart Awards Proving Successful

Let's keep the momentum going!

.....



For the past six months, the County has been honouring residents who go out of their way to help others, with Kind Heart Awards. Kind Heart Awards are given to residents who have been nominated for helping out a friend, neighbor or even a stranger during a time of need.

Acts of kindness are essential for the communities we live in - and good deeds often lead to future acts of kindness and foster community spirit.

That is why FCSS and County Councillors are going the extra mile to recognize the kindhearted members of our community.

The County would like to recognize the following award recipients for their contributions to their communities and for their desire to make the County a better place through their selfless acts.

MAE TRELLE

Mae was nominated by Wembley FCSS Coordinator Pam Decker for the special trips she makes to the FCSS office in Wembley to contribute to local community events. Mae is known to bring cookies to the volunteers setting up for community events.

MCDONALD FAMILY

Alec, Shelly, Erin, Jock and Kalum McDonald were nominated by their neighbour Doreen for always being kind and thoughtful neighbours. As a young child, Kalum would walk over to Doreen's place every morning with breakfast in hand and enjoy a game of crib. The whole family

would come to plow her drive way and till her garden. Doreen is greeted by random goodies and notes in her mail box left by the McDonalds.

DAN

Neighbours' nominated Dan for the Kind Heart Award. Dan is the neighbour who waters their garden, takes care of any mechanical problems, looks after their house while away and is always willing to lend a helping hand.

KEN AND ARLENE

Ken and Arlene were nominated by a neighbour for their work during a bad snowstorm last winter when they were out rescuing people who were stuck. Ken and Arlene also regularly mow community areas without being asked and are always there to lend a hand when needed.

Earlier in 2017, four other residents were nominated for Kind Heart Awards. Let's keep the momentum going. Nominate a Kind Heart today!

To learn more about the Kind Heart Awards Program or to nominate a deserving person, go to www.countygp.ab.ca/kindheartprogram or contact Family and Community Support Services at 780-532-9727.



Area Councillor and Deputy Reeve Ross Sutherland presenting the Kind Heart Award to Mae Trelle.



Area Councillor Harold Bulford presenting the Kind Heart Award to Kalum McDonald. Kalum accepted the award on the entire family's behalf.

Recreation Programs



KEEP AN EYE OUT FOR UPCOMING EVENTS!

The County was proud to launch new recreation programs this past spring and summer on Outdoor Safety, Nordic Pole Walking, Music in the Park, and Shutterbugs in the Park. The programs were well attended and feedback was extremely positive!

Stay tuned to www.countygp.ab.ca/recreationprograms and the County's Facebook and Twitter pages for upcoming dates and details about recreation programs at your favourite County locations this fall and winter!

WANT TO BUILD A NEIGHBOURHOOD ICE SURFACE IN YOUR COMMUNITY THIS WINTER?

Grants of up to \$1,000 per year are available from the County!

Full details at: www.countygp.ab.ca/icesurfaces

ZOMBIE FUN RUN OCTOBER 14TH

Mark your calendars!

The County is proud to partner with the 2018 Alberta Summer Games Committee to host the 5 km Zombie Fun Run located at the Dunes Golf & Winter Club on October 14 from 1:30 p.m. to 4:30 p.m. The cost to participate is \$40 per person and includes a BBQ lunch, zombie themed medals for those who cross the line with a flag, raffles, and prizes for best costume. All proceeds raised at the Zombie Fun Run will go towards the 2018 Alberta Summer Games Society.

For more information and to register visit www.eventbrite.ca.



How to Make Requests for Sponsorship

Are you a community group or organization looking for support whether it is through sponsorship for a fundraising or community event? If so, the County may be able to help you. In order for your request to be properly processed and possibly granted by the Recreation Advisory Committee and County Council, the following steps must be completed:

- Complete the Council Meeting Sponsorship and Silent Auction Items Request Form available online at www.countygp.ab.ca by searching "Event Sponsorships", or by grabbing a hard copy at the Community Services Building located on Township Road 724, (1.6 km west of Highway 2).
- Submit the completed form by email to www.parksandrecreation@countygp.ab.ca or in person to the front reception of the Community Services Building between 8:30 a.m. and 4:30 p.m. excluding the lunch hour on weekdays excluding holidays.
- Requests will only be accepted quarterly. You must submit the request form for sponsorship, or silent auction items/door prize items by the deadlines:

EVENT DATE	REQUEST FORM DEADLINE
January February March 2018	December 1, 2017
April May June 2018	March 1, 2018
July August September 2018	June 1, 2018
October November December 2018	September 1, 2018

For more information, contact the Parks and Recreation department: parksandrecreation@countygp.ab.ca or 780-532-9727.



countygp.ab.ca

Nominate a Farm Family!

Do you know a farm family in the County of Grande Prairie that is deeply committed to agriculture and actively involved with helping their community?

If so, the County of Grande Prairie Agricultural Service Board, in partnership with the Peace Country Classic Agri-Show, want you to nominate them for the 2018 Farm Family Award.

The winning Farm Family will be honoured at the Peace Country Classic Agri-Show during the Annual Banquet event. They will also represent the County of Grande Prairie at the BMO Farm Family Awards held in Edmonton next fall.

The deadline to submit nominations is 2 p.m. on December 15.

Nomination packages are available online at www.countygp.ab.ca/farmfamily or can be picked up at the County Community Services Building during business hours (8:30 a.m. – noon, 1:00 p.m. – 4:30 p.m., Monday to Friday).

Return completed nomination forms by:

FAX:

780-567-5589
Attention: Sonja Raven
Agricultural Service Board

DIRECT MAIL:

Sonja Raven
County of Grande Prairie
Agricultural Service Board
10001 – 84 Avenue
Clairmont, AB, T8X 5B2

IN PERSON:

County Community Services Building
Located at 10808 – 100 Ave, Clairmont
(1.5 km west on Township Road 724 off Highway 2)

For more information, please contact Sonja Raven, Agricultural Fieldman, at 780-532-9727.



Eady family
2017 Farm Family Award Recipient

Clubroot Infestation in the Peace County

.....

The County of Big Lakes had the first confirmed case of clubroot infestation reported this past August. Clubroot is a soil-borne disease of plants in the cabbage/mustard family. Once land is infested with clubroot spores, it can take more than 20 years for those spores to die. There is no known treatment to prevent clubroot, only good management practices.

The current clubroot-resistant cultivars do not have resistance to the new strains of clubroot that are being found in Alberta. Should these strains of clubroot become well-established, our agriculture industry that is so reliant on canola will be seriously impacted.

For many years, the Peace County has been working with short rotations between canola crops. The presence of clubroot now reinforces the need to ensure that there are three to four years between canola plantings.

The County of Grande Prairie encourages all producers to use best management practices for clubroot.

If you have any questions or concerns, please visit www.countygp.ab.ca/clubroot or call Sonja Raven, PAg, Agricultural Fieldman at 780-532-9727.

“Should these new strains of clubroot become well-established, our agriculture industry that is so reliant on canola will be seriously impacted.”



BEST MANAGEMENT PRACTICES FOR CLUBROOT

- Three to four years between successive canola plantings
- Proper sanitation of all equipment (especially if purchased from areas known to have clubroot)
- Using clubroot-resistant strains of canola seed
- Controlling any weeds in the mustard family (stinkweed, shepherd's purse, wild mustard)

Random Act of Kindness Day



Random Act Of Kindness Day®

RANDOM ACT OF KINDNESS DAY IS NOVEMBER 3RD HOW WILL YOU CELEBRATE?

The County of Grande Prairie has partnered with the Community Foundation of Northwestern Alberta for Random Act of Kindness Day. Join the rest of the community in celebrating Random Act of Kindness Day on November 3, 2017!

Random Act of Kindness Day® is an opportunity to do something kind for someone else, to appreciate fellow citizens, and to strengthen our communities. In our hectic daily lives, we don't always take the time to slow down and reflect on how fortunate we are to live in this beautiful region. On November 3rd, 2017, take the opportunity to connect with each other and with community through an act of kindness.

Whether it's paying it forward by buying coffee for the car behind you in the drive-thru, shovelling the driveway for a neighbour, letting someone go in front of you in line at a grocery store, or volunteering at your local food bank, every act of kindness makes a difference.

Stay tuned to www.countygp.ab.ca, the County's Facebook Page as well as the Community Foundation of Northwestern Alberta for Random Act of Kindness Day's Facebook Page for further announcements on Random Act of Kindness Day events.

A vibrant display of fireworks exploding in the night sky, with colors ranging from bright yellow and orange to deep purple and blue.

Planning to celebrate this holiday season with a bang?

As the holiday season approaches, the County would like to remind residents that a permit is required before celebrating any occasion with fireworks.

Permits are free but applications must be made in person at the County Community Services Building. There is a \$100 annual fee for businesses to sell and stock fireworks.

For more information, please refer to www.countygp.ab.ca/firepermits.

Go Paperless!



Conserve our natural resources and save paper. Get quick and easy access to news about the latest happenings at the County by signing up for the County Connections e-newsletter.

Subscribing for online delivery will provide you with important and interesting information about the County – and it only takes a few simple steps. Get started by clicking on www.countygp.ab.ca/subscribe.

We want to know what you think about County Connections. Send your comments and suggestions to communications@countygp.ab.ca.

New Granite Columbarium at Emerson Trail Cemetery

Providing an alternative to traditional burial

A columbarium is a special, permanent structure designed to hold cremated human remains.

Cremated remains are first placed in an urn, which is then stored in a sealed and secure niche in the columbarium.

COSTS

\$1,250 each

36 niches are available. Each niche has room for two standard size urns.

\$250

Opening fee for the placement of a second urn in a reserved niche.

\$220

Inscription of a name and date on the niche door.

FOR MORE INFORMATION:

www.countygp.ab.ca/cemeteries

or contact the Parks and Recreation department at **780-532-9727** or parksandrecreation@countygp.ab.ca



This one was specially designed to acknowledge the County's deep agricultural roots.



countygp.ab.ca



Come Play!

The Crosslink County Sportsplex
has a program for everyone!

780-830-7407

info@cgpsportsplex.com

crosslinkcountysportsplex.com

GET FIT WHILE HAVING FUN!

Get fit while having fun! Come and try out our FitMom Boot Camps on Monday and Wednesday mornings or register for Aerial Yoga! Sign up or drop in today for one of these exciting programs offered at the Sportsplex:

- Aerial Yoga
- FitMom Boot Camps
- Stick and Puck
- Adrenaline Athletics Cheerleading
- Active Tots Sports Academy
- Learn to Skate
- Adult Shinny and Stick and Puck
- Lunch Time Stick and Puck
- Tender Tots
- Bouncy Castle Days
- Seniors Walk and Talk
- Ball Hockey
- Yoga
- KnockerBall
- 13 and Under Shinny
- Lacrosse
- U5, U8 and U11 Soccer League
- Adult Non-Contact Hockey League – Register your team for the next season!
- Indoor batting cage

For more information about these programs and drop-in activities, including class descriptions, times and locations, go to our website.

UPCOMING EVENTS

U4, U6, U8 & U11 Youth Fun Soccer Leagues

Register your children for these fun-filled Saturday leagues that will be split into smaller age groups to accommodate all skill levels if there are enough registrants from each age group (3-4 year olds, 5-6 year olds, 7-8 year olds, and 9-11 year olds). Registration includes a t-shirt and a season-ending medal. Parents who coach or assistant coach will receive a \$30 refund at the end of the session. The 2017 Fall Session runs from October 14 to December 16, 2017.

Learn To Skate

Join our highly certified instructor, Bev Whalen, for the Fall & Winter 2017 sessions of Learn to Skate. Sessions run from October 2 to November 9, November 13 to December 21, January 8 to February 15, February 20 to March 29, and April 9 to May 17, 2018. Call or visit the Sportsplex, or visit www.crosslinkcountysportsplex.com for more information or to register your child.

County of Grande Prairie JDA Kings

Come and cheer on the County Kings as they strive to be number one in the Northwest Junior Hockey League. Find their schedule at www.nwjhl.com. Be sure to come and cheer on your favourite players!

4th Annual Santa Play & Skate

Our 4th Annual Santa Skate is Saturday, December 10 from 10:30 a.m. to 12:00 p.m. in the Trican Fieldhouse and from 12:00 p.m. to 1:30 p.m. on Pat's Auto Rink. The Play & Skate with Santa is in partnership with the Community Foundation of the County of Grande Prairie Firefighters. Come and meet Santa, Sparky and your local heroes while enjoying hot chocolate and candy canes! Admission is by donation of food or cash will all proceeds going to the Sexsmith and Area Hamper Program.

Thanksgiving & Remembrance Day

On October 9 and November 11, the Sportsplex will have many drop-in programs scheduled to entertain your family! Visit our website to view the Facility Calendars.

Winter Break Kids' Camp

Make sure your kids have an active and fun-filled Christmas Break – enroll your 5-12 year-old children in our four-day Winter Break Camp from January 2 to January 5, 2018.

Camps include indoor play at the Trican Fieldhouse, crafts, activities and games! Discounts are available for two or more children.

For more information or to enroll your child, call 780-830-7407 or go to www.crosslinkcountysportsplex.com.

Valentine's Day Two-For-One Skate

On February 14, 2018, drop in for a skate with your sweetheart, friend or family member to enjoy a two-for-one rate. Check for times at www.crosslinkcountysportsplex.com.

Family Day

Drop in for our Annual Family Day Events and receive 50% off of all admission prices. Check the Sportsplex website for drop-in times.

Active Tots Montessori Sports Academy

Sign your little ones up to learn and stay active at Active Tots! They will participate in all types of sportsmanship and learning with qualified coach, Montessori teacher, fitness leader and early childhood worker coach Amanda. Find them on Facebook, email them at activetots@outlook.com, or give Amanda a call at 780-882-9391 for more information.

Adrenaline Athletics

The Sportsplex is excited to be the home of the brand new Adrenaline Athletics Competitive Cheerleading Program! Cheerleading has been recognized as an Olympic sport, and Adrenaline Athletics has highly certified Coach Jennifer Lekisch directing this energetic new program. For more information, find them on Facebook, email adrenalineathleticsgp@gmail.com or call 780-228-4043.

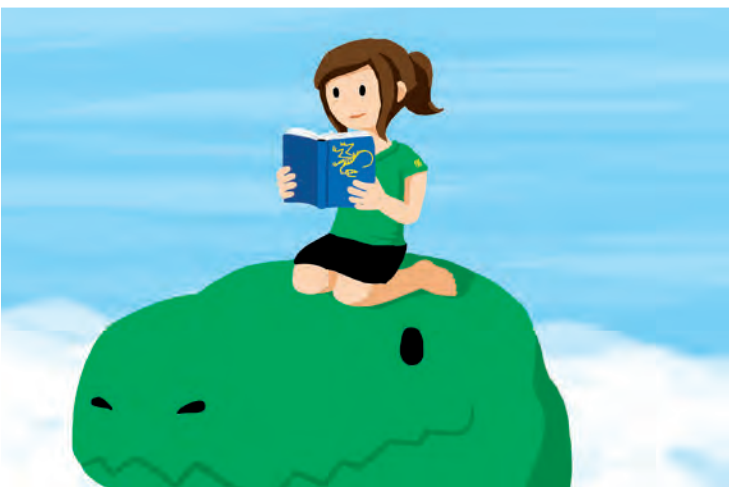
Book Your Next Party or Event at the Sportsplex!

The Sportsplex is the place to be for your next party or event! Book the ice rink, fieldhouse, dry floor, meeting room, Knockerballs or a bouncy castle! And leave the catering to us – choose from a wide variety of food and drinks from either the Over-Time Family Sports Lounge or Tito's Concession.

Contact the Sportsplex for more information about party costs and packages, to view menus, and to secure your booking. For more information about the Sportsplex and the programs and events available, visit www.crosslinkcountysportsplex.com, or contact 780-830-7407 or info@cgpsportsplex.com.



PHILIP J. CURRIE DINOSAUR MUSEUM



AUTUMN 2017 PROGRAMS & EVENTS

The Wildest Dream

National Geographic's feature-length film "The Wildest Dream: Conquest of Everest" is now playing in the Aykroyd Family Theatre! The breathtaking and heart-pumping documentary will be replacing the feature-length The Last Lions.

For details and showtimes visit
www.dinomuseum.ca/movies.

Dino Story Time

Join us at 2:30 p.m. every fourth Friday of the month for a live reading of a dino-themed storybook hand-picked from our gift shop! Attendance is free!

Free Lecture Series

The museum hosts regular free lectures in the Aykroyd Family Theatre on dinosaurs, palaeontology, and other topics. On Saturday, October 14, Dr. Glenn Dolphin from the University of Calgary will talk about geoscience literacy.

Learn more about this and our other lectures at
www.dinomuseum.ca/events/lecture-series

Call for Volunteers

The museum is in need of volunteers to assist with a variety of projects, including fossil preparation, gallery tours, and community outreach.

If you or someone you know would be able to donate some time, please contact
visitorservices@dinomuseum.ca.

Visit www.dinomuseum.ca/events for more information.



countygp.ab.ca



TOP ROW FROM LEFT TO RIGHT: Councillor Corey Beck, Councillor Harold Bulford, Councillor Daryl Beeston, Councillor Peter Harris, Councillor Karen Rosvold

FRONT ROW FROM LEFT TO RIGHT: Councillor Brock Smith, Reeve Leanne Beaupre, Deputy Reeve Ross Sutherland, Councillor Bob Marshall

COUNCILLOR CONTACT INFORMATION

Councillor Harold Bulford

Division 1
H: 780-567-4119
C: 780-876-9009
hbulford@countygp.ab.ca

Councillor Daryl Beeston

Division 2
H: 780-567-4299
C: 780-933-3464
dbeeston@countygp.ab.ca

Reeve Leanne Beaupre

Division 3
H: 780-538-3809
C: 780-814-3121
lbeaupre@countygp.ab.ca

Deputy Reeve

Ross Sutherland

Division 4
H: 780-532-8686
C: 780-512-5385
rsutherland@countygp.ab.ca

Councillor Bob Marshall

Division 5
H: 780-766-2161
C: 780-933-2053
bmarshall@countygp.ab.ca

Councillor Peter Harris

Division 6
H: 780-354-2823
C: 780-933-3074
pharris@countygp.ab.ca

Councillor Brock Smith

Division 7
H: 780-356-2694
C: 780-296-1973
bsmith@countygp.ab.ca

Councillor Karen Rosvold

Division 8
C: 780-831-0902
krosvold@countygp.ab.ca

Councillor Corey Beck

Division 9
H: 780-568-2223
C: 780-831-6394
cbeck@countygp.ab.ca

SENIOR ADMINISTRATION

Bill Rogan

Chief Administrative Officer
780-532-9722
brogan@countygp.ab.ca

Nick Lapp

Planning & Development
Services Director
780-532-9722
nlapp@countygp.ab.ca

Arlen Miller

Community Services Director
780-532-9727
amiller@countygp.ab.ca

Dale Van Volkingburgh

Public Works Director
780-532-9722
dvan@countygp.ab.ca

Dawn Sauvé

Corporate Services Director
780-532-9722
dsauve@countygp.ab.ca

COUNTY CONTACT INFORMATION

EMAIL:

info@countygp.ab.ca

ADDRESS:

10001 – 84 Avenue
Clairmont, AB T8X 5B2

WEBSITE:

www.countygp.ab.ca

OFFICE HOURS:

8:30 a.m. to 4:30 p.m.
Closed from 12 p.m. to 1 p.m.
and on statutory holidays

COUNTY ADMINISTRATION BUILDINGS

Administration, Assessment,
Economic Development, Finance
& Systems, Communications, Human
Resources, Public Works, Planning &
Development Services

780-532-9722

COMMUNITY SERVICES BUILDINGS

Agriculture Services, Regional
Enforcement Services, Regional Fire
Service, Parks & Recreation

780-532-9727



Follow us on Twitter



Watch us on YouTube



Like us on Facebook

Return undeliverable
Canadian addresses to:
The County of Grande Prairie No. 1
10001 – 84 Avenue, Clairmont, AB T8X 5B2

