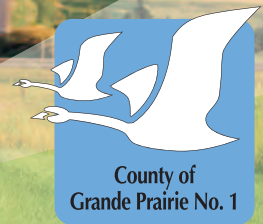


COUNTY CONNECTIONS



SPRING 2018

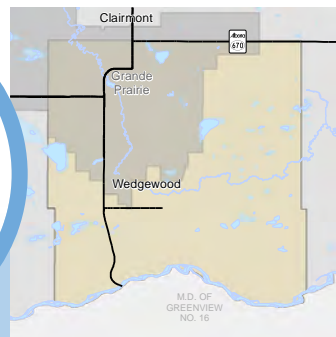
Meet Your Councillors Pg. 1-8
Intermunicipal Development Plan Pg. 9
County Open Houses Pg. 10
No Spray Program Application Pg. 11

100 Years of Farming Pg. 10
Farm Family of the Year Pg. 12
Annual Roadside Cleanup Pg. 13
Rural Addressing Pg. 18

Backyard Organics Pg. 14
Recycling Pg. 15
It's Fire Season Pg. 16
Recreation Programs Pg. 19

New Park Hosts Pg. 21
County Sportsplex Pg. 22
2018 Alberta Summer Games Pg. 24
Dinosaur Museum Pg. 26

Reeve's Message



DIVISION 3 COUNCILLOR AND REEVE:
LEANNE BEAUPRE
780-814-3121 | lbeaupre@countygp.ab.ca

Already well into our four-year term, Council is hard at work on a number of initiatives, bringing their insights and knowledge into planning for the future of the County. I congratulate all of those councillors who are returning and the new councillor, Linda Waddy, for their election onto Council. I see a strong council that is well-connected to the community, has an innovative outlook, and a sincere commitment to the well-being of local citizens, businesses and communities.

I am honoured to be re-elected in my fifth term as Division 3 representative and thank you for your confidence. I am also very privileged to once again serve the County as Reeve. The County saw some very important accomplishments during the last term, and I am excited to work with County Council, staff and local communities to keep the momentum going. I have been a lifelong resident in the Peace Region, personally connected to this area.

Regional collaboration and positive relationship-building with our neighbouring municipalities is a priority for the County, and a number of initiatives are already underway with this goal in mind. Council is currently planning for the development of

our Intermunicipal Collaboration Frameworks (ICFs). As part of the amendments to the Municipal Government Act, ICFs will formalize how municipalities sharing borders will manage growth, collaborate on infrastructure and service delivery, and optimize resources for citizens. We are developing single agreements with each municipality and expect to have these completed by 2020. These agreements recognize the unique characteristics and needs of each municipality, while leveraging our collective strength.

Our timeline for the development of the Intermunicipal Development Plans (IDPs) with Wembley, Hythe, Beaverlodge and Sexsmith is set. IDPs establish the framework for coordinated land use planning, economic development, and servicing and transportation issues. Public consultation commences in 2018, with completion in 2019. We will also have IDPs with the MD of Greenview, Saddle Hills County and Birch Hills County. Our IDP with the City has been in effect since 1982 and is updated as needed. I sincerely appreciate the hard work of our employees in moving these projects forward, and invite the public's engagement in this process.

We have numerous other new partnerships underway with local municipalities.

- The County is working with the City, Wembley, Beaverlodge, Sexsmith, and Hythe to determine the feasibility of a regional handibus service. This service will improve mobility options primarily for seniors and disabled residents, which is especially important for rural residents.
- We are partnering on a Road Needs Assessment with Beaverlodge (lead), Hythe and Wembley to determine current condition of paved road systems and identify future rehabilitation priorities. We received an Alberta Community Partnership Grant (ACP) for this initiative.
- We recently renewed our agreement with Sexsmith to provide Safety Codes services to the town and with Beaverlodge for Family and Community Support Services (FCSS) programs.

- We are partnering with Sexsmith on a Storm Water Master Plan and Basin Study, with the goal to develop an overall storm water master plan for Sexsmith. This, too, is an ACP Grant, with Sexsmith as the lead. The County also invested \$1.85 million to add extra capacity to the pipe as part of the waterline to Wembley project and upgrade of the booster station to facilitate water in the Dimsdale area.
- The Tri-Municipal Partnership with the City and Greenview is moving forward. This opportunity to explore the development of a world-class heavy industrial park holds tremendous potential for our whole region and is gaining international attention.

It is critical that traffic can move easily and safely around the County road network. Last year, Council committed nearly 75 per cent of its capital budget to County road improvements. Expect to see work continuing this year. We are also continuing our advocacy efforts with the Province for improvements to Highway 40. Safety is a serious and growing concern, especially with the surge in traffic on this route due to increased economic activity.

Healthcare infrastructure is essential to the overall well-being of County residents and our economy, and this is the message we'll be bringing to the Province as we continue our advocacy work for the Beaverlodge West County Health Facility. Local governments along with citizens have been, and continue to be, very committed to seeing this facility move forward in a timely manner.

Over this next term we will continue to strive to balance development and progress with long-term healthy and sustainable growth. Our economic horizon is looking very optimistic, and with that, growth brings certain challenges that must be approached innovatively with an eye for the future. We will be working closely with you to look for ideas and priorities for your communities. Thank you to the many stakeholders who shared their insights for the County's Growth and Economic Development Strategy. This visionary 50-year "roadmap" will provide a framework for how to best utilize land in the County to create economic opportunities for our area.

There is lots of positive energy ahead with participants from across Alberta converging on our region this summer as we co-host the Alberta Summer Games with the City of Grande Prairie. I encourage you to get involved. It is a great way to showcase our region and support the development of young people.

I always appreciate the insights of our residents and local stakeholders, as I see such genuine commitment to the well-being and future of our County. Please feel welcome to call me or any of our councillors to bring your ideas forward.

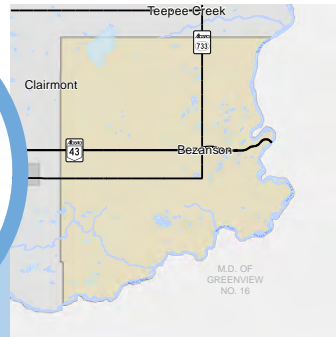


Boards and Committees

- County/City Joint Committee
- Agricultural Service Board
- Family and Community Support Services Board
- Finance Committee
- Recreation Advisory Committee
- Unsightly Premise Appeal Board
- Alberta Public Safety Services Local Disaster Services
- Grande Prairie Pursuit of Excellence Committee
- Grande Prairie Region Agricultural Exhibition Society
- Grande Prairie Regional Recreation Committee
- Municipal Planning Commission – *Chair*
- Norbord Public Advisory Committee – *Alternate*
- Peace Regional Economic Development Association (PREDA) Northwest Transportation Advisory Council
- Philip J. Currie Dinosaur Museum Operating Agreement Negotiating Committee
- Public Works Committee
- QEII Grande Prairie Regional Hospital Foundation "Key to Care Campaign"
- Ron Pfau Memorial Scholarship
- Tri-Municipality Committee
- Vital Signs Leadership Committee
- Wapiti Corridor Planning Society
- Water North Coalition – *Alternate*
- Weyerhaeuser Environmental Advisory Committee
- County Recreation Board – *County of Clairmont-Bezanson*
- County Recreation Board – *County of Wembley-Dimsdale-Saskatoon Lake*
- County Recreation Board – *County of Grande Prairie*
- 211 Alberta Steering Committee – *Alternate*

Meet Your County Councillors

Get to know your 2017 – 2020 County Councillors, the areas of the County they represent, their priorities, and some of the initiatives, programs and projects underway in our community.



DIVISION 1 COUNCILLOR: HAROLD BULFORD
780-876-9009 | hbulford@countypg.ab.ca

I have been a resident of the County for over 50 years, and currently operate a contracting business. I am looking forward to entering my third term on County Council in Division 1. I am excited to be working with knowledgeable and experienced councillors who have already been at the table and with our newly-elected councillor, bringing new perspectives and skillsets.

In the upcoming term one of my priorities is to work toward tourism and economic development opportunities. There is much untapped beauty in our region, which can be leveraged to bring tourist dollars to support local business. As we grow and develop, it's also important that we find the right balance between maintaining quality farmland for agriculture, and seeking more suitable areas for development. In my last term, we saw some important County investments in local projects, such as \$2.2 million in funding towards the community centre in Bezanson, and we developed sound policies regarding the preservation of good farmland from development.

I will aim to focus on continuing to build working relations with the City, providing opportunities and services for seniors, supporting programming for FCSS and ensuring that supports are available for agriculture. I believe in continually strategizing to provide quality services while keeping taxes affordable.

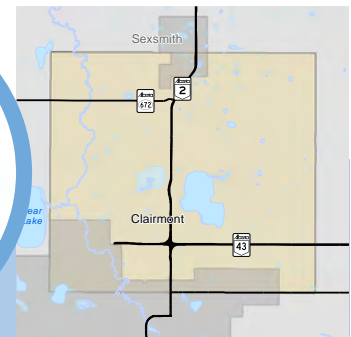
Transportation infrastructure will continue to be a priority as we need safe roads for our families and our economy. As part of this commitment, I will advocate for the completion of the Area Structure Plan in Division 1. Council will continue to lobby the provincial government for changes to the Highway 43 and Highway 733 intersection.

I enjoy working for the citizens and listening to your priorities, and I look forward to addressing the challenges

and opportunities that will arise this term. I am sincerely committed to being a strong voice as I represent you over the next four years.

Boards and Committees

- County/City Joint Committee
- Agricultural Service Board
- Family and Community Support Services Board
- Finance Committee
- Recreation Advisory Committee
- Unsightly Premise Appeal Board
- Municipal Planning Commission
- Grande Prairie Regional Emergency Management Committee (Bylaw 2987)
- Grande Prairie Regional Recreation Committee
- Nitehawk Board of Directors
- Ron Pfau Memorial Scholarship
- 2018 Alberta Summer Games Committee
- Alberta Public Safety Services Local Disaster Services
- Local Public Safety Services
- County Recreation Board – *County of Clairmont-Bezanson*
- Public Works Committee



DIVISION 2 COUNCILLOR: DARYL BEESTON
780-933-3464 | dbeeston@countypg.ab.ca

I wish to thank you for your support during the last election. As I go into my second term on Council, I look forward to serving the residents of Division 2 and all County residents.

I have been a County resident for over 25 years, and having raised my family in this area, I have a great appreciation for services that support families and improve everyday life for all individuals in the County. During this next term, I am committed

to working with my fellow councillors to continually seek ways to enhance the lives of all County residents.

As we move forward with the Intermunicipal Collaboration Agreements, I look forward to working with all neighbouring municipalities within the County to further enhance the delivery of transportation, recreation and emergency services.

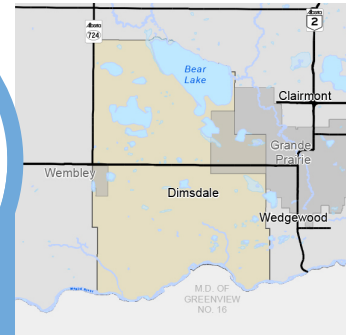
The development and maintenance of roads and infrastructure continues to be one of my priorities. The County has begun implementing a Transportation Master Plan that will improve roads in the County and ease traffic congestion, ultimately addressing safety and ease of traffic movement. With our unusually heavy snowfall this past winter, we will continue to monitor operations in this area so we can respond as quickly as possible.

I also strongly support recreation opportunities and accessibility, and am pleased that work is underway to implement the Grande Prairie and Area Joint Recreation Master Plan, in collaboration with the City, all towns and hamlets in the County, and also parts of Greenview. Last term, Council was committed to addressing crime rates; we'll be continuing to focus our efforts in this area.

Residents are always welcome to contact me if you have any questions or concerns. I am always willing to bring your ideas and priorities to the decision-making process.

Boards and Committees

- County/City Joint Committee
- Agricultural Service Board
- Family and Community Support Services Board
- Finance Committee
- Recreation Advisory Committee
- Unsightly Premise Appeal Board
- Canfor Advisory Committee – *Alternate*
- Family and Community Support Services Board (FCSS)
- Grande Prairie Regional Tourism Association
- Grande Prairie Regional Recreation Committee
- Local and Composite Assessment Review Board
- Municipal Planning Commission
- Peace Regional Economic Development Association (PREDA)
- Peace Regional Economic Development Association (PREDA) Northwest Transportation Advisory Council
- Philip J. Currie Dinosaur Museum Operating Agreement Negotiating Committee
- Public Works Committee
- County Recreation Board – *County of Clairmont-Bezanson*
- County Recreation Board – *County of Grande Prairie*



DIVISION 4 COUNCILLOR:
DEPUTY REEVE ROSS SUTHERLAND
780-512-5385 | rsutherland@countygpa.ab.ca

I have been a local resident my whole life, and live on my family farm in the Dimsdale-Wembley community. Actively involved in agriculture as a producer, I have great appreciation for the rural lifestyle we enjoy in the County. Having completed my second term as councillor and my sixth consecutive year as Deputy Reeve, it is my privilege to be elected to represent Division 4, and to once again serve as Deputy Reeve.

My main priority is to maintain and enhance the quality of life for all of our residents. I believe that transportation, municipal water infrastructure systems and safety and security are foundational for our everyday lives and key to enriching our lifestyles. Specific areas of priority are continued upgrades to our main transportation routes so we may commence upgrades on residential routes.

Tourism is an important economic pillar for the County and for the people who live here. I am proud of the role I was able to play, and the County's work and commitment, in seeing the opening of the Philip J. Currie Museum. This world-class facility has since gained international attention. This term, I will be working to see continued upgrades that will enhance the operation of Evergreen Park.

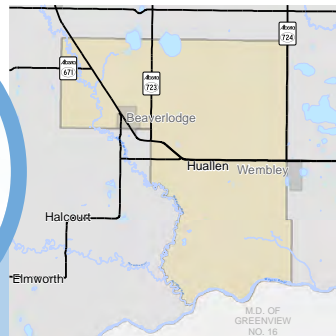
As Deputy Reeve, I will be participating in the ongoing planning and development of the Tri-Municipal Industrial Project. This promises tremendous opportunities for our region. Our diverse economy and business environment strengthen our local tax base and create opportunities for employment that benefit all of us. I strongly believe that it is our residents' "can do" attitude that is the heart that drives the County.

Throughout this next term, I am committed to providing the leadership required to retain our quality of life and values that attract so many to the County.

Boards and Committees

- Public Works Committee
- County/City Joint Committee
- Agricultural Service Board

- Family and Community Support Services Board
- Finance Committee
- Recreation Advisory Committee
- Unsightly Premise Appeal Board
- Canfor Advisory Committee
- Grande Prairie Regional Agriculture Exhibition Society
- Municipal Planning Commission – *Vice Chair*
- River of Death & Discovery Dinosaur Museum Society
- Saskatoon Lake Steering Committee – *Chair*
- Wapiti Corridor Planning Society – *Alternate*
- Tri-Municipality Committee
- West County Regional Landfill Authority (Tervita)
- County Recreation Board – *County of Wembley-Dimsdale-Saskatoon Lake*
- County Recreation Board – *County of Grande Prairie*



DIVISION 5 COUNCILLOR: BOB MARSHALL
780-933-2053 | bmarshall@countygp.ab.ca

I am very pleased to serve in my second term as councillor for Division 5. Over the past 30 years as a resident of the County, I have been involved with many organizations, including serving as a school board trustee and working at Weyerhaeuser. These roles have provided me with important insights in my role as councillor, and really helped me understand the needs and priorities of the area first-hand.

I firmly believe in continually seeking opportunities to make the County a desirable place to live and raise a family. The formation of Wapiti Area Synergy Partnership addressing oil and gas activity impacts to residents is a sound example of the power of partnerships and commitment of locals working together. We have a strong and diverse economy in the Grande Prairie region, which includes forestry, oil and gas, agriculture, and tourism. It is through balancing the needs of local residents with the priorities of industry that we will continue to enjoy a strong quality of life in our area.

Access to health care services and facilities in our communities and region is a priority. Working with Council and local stakeholders, I will continue to lobby the provincial government for a new health facility in Beaverlodge, an essential facility that addresses the health and wellness of all of our residents.

I look forward to my work with Council over the next four years to ensure our County continues on a strong and sustainable path. As your representative on Council, I am always interested in talking to ratepayers to hear your concerns and ideas.

Boards and Committees

- Public Works Committee
- County/City Joint Committee
- Agricultural Service Board
- Family and Community Support Services Board
- Finance Committee
- Recreation Advisory Committee
- Unsightly Premise Appeal Board
- Beaverlodge FCSS Advisory
- Alberta Public Safety Services Local Disaster Services
- Grande Prairie Regional Tourism Association – *Alternate*
- Municipal Planning Commission
- Peace Airshed Zone Association (PAZA)
- South Peace Physician Action and Retention Committee – *Alternate*
- Water North Coalition
- West County Regional Landfill Authority (Tervita)
- County Recreation Board – *County of Beaverlodge-Elmerworth-Hualien*
- County Recreation Board – *County of Wembley-Dimsdale-Saskatoon Lake*



DIVISION 6 COUNCILLOR: PETER HARRIS
780-933-3074 | pharris@countygp.ab.ca

Being a long-time resident, farmer and business owner in the Grande Prairie area, I have had the opportunity to gain a sound understanding of the needs of Division 6, as well as the County and region as a whole.

Throughout my second term on Council, I am committed to working to ensure there is a balance between the demands



of the urban and rural needs and priorities of the County, and ensure that every voice is represented in decision-making.

Transportation infrastructure, including roads and bridges, will again be a focus of my work on Council. I will advocate for improvements in Division 6, as well as improvements to the road and bridge network throughout the entire County. I am very pleased with the initiative the County has taken in developing the Transportation Master Plan, a forward-thinking document that outlines the future road and bridge network within the County.

I am also working diligently to advocate for a second bridge across the Red Willow River that is not width and height restricted, and will benefit the whole County.

Collaboration with other municipalities in the area is very important to our region. These partnerships serve to further enhance the services of all municipalities and support quality lifestyles for all citizens.

I am looking forward to serving you as Division 6 Councillor, and am always interested in hearing from people and learning what is important to them. I invite your calls and your input.

Boards and Committees

- Public Works Committee
- County/City Joint Committee
- Agricultural Service Board – *Vice Chairperson*
- Family and Community Support Services Board
- Finance Committee
- Recreation Advisory Committee
- Unsightly Premise Appeal Board
- Local and Composite Assessment Review Board
- Municipal Planning Commission
- Saskatoon Lake Steering Committee – *Vice Chair*
- South Peace Regional Archives
- SPCA Joint County/City Committee
- West County Regional Landfill Authority (Tervita)
- Wembley and Sexsmith Seed Cleaning Plant (Wembley)
- County Recreation Board – *County of Beaverlodge-Elmworth-Huallen*



DIVISION 7 COUNCILLOR: LINDA WADDY
780-897-5609 | lwaddy@countygp.ab.ca

I have been a resident of Division 7 since my arrival in the Grande Prairie region in 2001. The chance to live in such a beautiful part of Alberta was too good to pass up.

My decision to become a County Councillor was driven by the memory of my grandfather talking about his love of being a municipal Councillor in a small municipal district (MD) in Manitoba. The main focus then, as it is now, was roads. Building and maintaining a viable transportation system is the foundation to the life of a municipality. I was born and raised on a dairy farm that my great-grandfather started and the rural way of life has always been important to me. I have been involved in the farming sector my whole life.

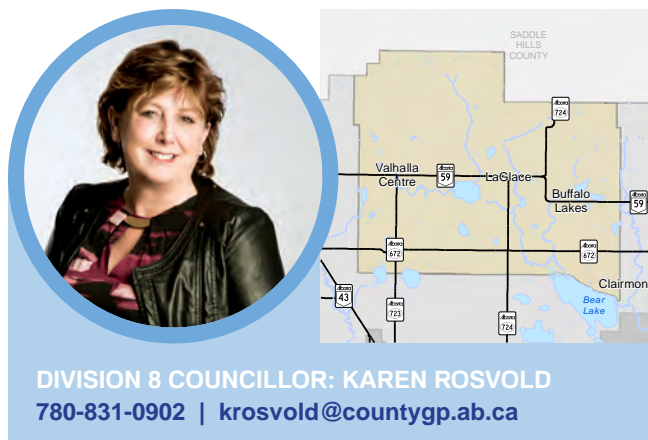
I see the County as a diverse municipality with tremendous opportunity to grow. Working with Council and County employees, I am confident in our vision to find sustainable ways to manage this growth while still maintaining our rural values.

Collaboration with our neighbouring municipalities will continue to be important and beneficial to all stakeholders in the region. These relationships will shape the future of our planning, development, growth and services, and really go back to our roots and our foundations: people working with people. Amendments to the Municipal Government Act have the potential to affect our municipal revenue; as such, I am committed to providing leadership to lobby to maintain our revenue sources.

I am ready to learn in my first term on Council and eager to contribute to the well-being and prosperity of County ratepayers. I am optimistic for the future of this area, and I believe in the value of engaging citizens in decisions that impact their quality of life and their futures. Your priorities and needs are important, and I look forward to the opportunity to serve you on Council.

Boards and Committees

- Public Works Committee
- County/City Joint Committee
- Agricultural Service Board
- Family and Community Support Services Board
- Finance Committee
- Recreation Advisory Committee
- Unsightly Premise Appeal Board
- Grande Prairie Sport Council Board of Directors
- Hythe Pool Advisory Committee
- Local and Composite Assessment Review Board
- Municipal Planning Commission
- Peace Library System Board
- River of Death and Discovery Dinosaur Museum Society
- West County Traffic Safety Coalition
- County Recreation Board – *County of Hythe-Demmitt-Valhalla*



DIVISION 8 COUNCILLOR: KAREN ROSVOLD
780-831-0902 | krosvold@countygp.ab.ca

I am very appreciative of the support of County residents during the last election season and I look forward to the opportunities ahead for all of us. My husband and I farm near La Glace, and with the addition of our grandchildren that are or will be County residents, it is especially personal to me to continue to enhance our rural communities and forge partnerships with our small urban neighbours for the delivery of quality services for all.

I have gained many insights about the local area through my involvement with local organizations including the La Glace Agricultural Society, the Valhalla Charter School and 4-H, and have served as chairperson for the Beaverlodge Rural Crime Watch Association and past president for the Suicide Prevention Resource Centre. I continue to volunteer with the Northfield Cemetery Committee and Silverwing Hall.

I am very proud of the work of our small rural communities in keeping the rural lifestyle alive, whether it is the community centre in Bezanson, agriculture facilities in Teepee Creek,

or the recreation facilities in La Glace and Valhalla. County investment, combined with the commitment of local volunteers, is proving to be a successful partnership toward building our communities. The County has approved funding for a new firehall in La Glace, an additional \$2 million over six years for the Regional Recreation Centre in La Glace, and another \$50,000 for the Valhalla Rec Centre.

There is much optimism on the horizon: the oil and gas industry is improving, and forestry and agriculture continue to be strong. Of course, that means busier traffic. We continue to advocate for safer Alberta Transportation infrastructure in the County, for improvements to Highway 724 and Highway 59, and for improved interchanges within our region.

I continue to work with our FCSS team in promoting healthy and safe communities. I was recently elected to the Family and Community Support Services Association of Alberta board, on which I am the board treasurer. Supporting our local non-profits is a way of looking after the health and wellness of our communities.

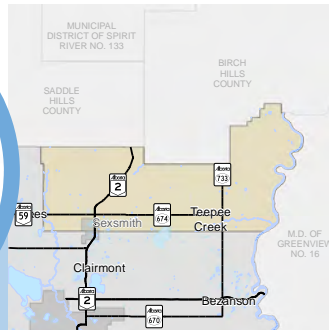
I look forward to continuing to work with the residents of Division 8, as well as the County staff and Council to see our community thrive.

Boards and Committees

- Public Works Committee
- County/City Joint Committee
- Agricultural Service Board
- Family and Community Support Services Board – *Vice Chair*
- Finance Committee
- Recreation Advisory Committee
- Unsightly Premise Appeal Board
- Municipal Planning Commission
- 211 Alberta Steering Committee
- County Library Board
- Grande Prairie Regional Emergency Management Committee (Bylaw 2987) – *Alternate*
- Grande Spirit Foundation – *Alternate*
- Local and Composite Assessment Review Board
- Peace Library System Board – *Alternate*
- South Peace Physician Action and Retention Committee
- SPCA Joint County/City Committee
- Northwestern Alberta's Vital Signs Leadership Committee
- Wembley & Sexsmith Seed Cleaning Plant – *Alternate*
- West County Regional Landfill Authority (Tervita)
- County Recreation Boards – *County of Sexsmith-La Glace-Teepee Creek*
- County Recreation Boards – *County of Hythe-Demmitt-Valhalla*



DIVISION 9 COUNCILLOR: COREY BECK
780-831-6394 | cbeck@countygyp.ab.ca



I look forward to my second term as Councillor representing Division 9 within the County, as well as being a voice for the County at a local and provincial level. I have been a resident of the County for 24 years, have an agricultural background and live on a farm in Teepee Creek with my family. Over the years I have come to know the community well, serving as a volunteer firefighter, a 4-H leader and as secretary on the Peace Country Beef and Forage Association.

I will continue to advocate on behalf of agriculture as chair of the Provincial Agricultural Service Board Provincial Committee. Transportation infrastructure is also a priority, and I am committed to furthering the significant work and investment of the County in road improvements.

I also support collaborative partnerships with our neighbouring municipalities. As part of the formation of the Grande Prairie Regional Recreation Committee last term, I will participate in the next steps, which will involve working with neighbouring communities to focus on the sustainability of our facilities. Through our ICFs, we aim to further strengthen our relationships with the City of Grande Prairie, local towns and village, and neighbouring municipalities.

Looking forward, my vision is to promote local economic

growth by building solid and collaborative relations with each industry to help guide the County on this continuous journey of sustainable growth well into the future.

I look forward to this upcoming term and the opportunity to advocate for our communities, and to represent the interests and priorities of County ratepayers.

Boards and Committees

- Public Works Committee
- County/City Joint Committee
- Agricultural Service Board – *Chairperson*
- Family and Community Support Services Board
- Finance Committee
- Recreation Advisory Committee
- Unsightly Premise Appeal Board
- Alberta Public Safety Services Local Disaster Services
- Community Futures of Grande Prairie and Regional Development Authority
- County Library Board – *Chair*
- Grande Spirit Foundation
- Grande Prairie Regional Recreation Committee
- Local and Composite Assessment Review Board
- Municipal Planning Commission
- Norbord Public Advisory Committee
- Peace Regional Economic Development Association (PREDA) – *Alternate*
- Provincial Agriculture Service Board – *Chair*
- Wapiti River Management Plan Committee (ASB Rep)
- Wembley & Sexsmith Seed Cleaning Plant (Sexsmith)
- Weyerhaeuser Environmental Advisory Committee
- County Recreation Board – *County of Sexsmith-La Glace-Teepee Creek*

Senior's Tea

DATE: June 7, 2018

TIME: 1:30 p.m. to 3:30 p.m.

WHERE: Evergreen Park



Join the County of Grande Prairie FCSS and the City of Grande Prairie Community Social Development for an afternoon of entertainment, socializing, light refreshments, door prize draws, and more!

This event is completely free and open to seniors from the County of Grande Prairie, the City of Grande Prairie and our neighbouring communities. **To reserve a seat and inquire about transportation please contact Melissa from County FCSS at 780-532-9727.**

Intermunicipal Development Plans Underway

The County of Grande Prairie, in partnership with the towns of Beaverlodge, Sexsmith and Wembley, and the Village of Hythe, are working with ISL Engineering and Land Services Ltd. to prepare Intermunicipal Development Plans (IDPs) between the County and each of the partner municipalities. The Province of Alberta, through the Municipal Government Act, now requires all municipalities that share a boundary to prepare a joint IDP by April 2020.

What is an Intermunicipal Development Plan?

An Intermunicipal Development Plan (IDP) is a long-term strategic plan between two or more municipalities.

The MGA requires that the IDP address:

- future land use;
- the manner of and the proposals for future development;
- transportation systems;
- proposals for the financing and programming of intermunicipal infrastructure;
- the co-ordination of intermunicipal programs related to physical, social and economic development; and environmental matters.

The MGA also requires that the IDP address matters relating to the administration of the plan, including a process to resolve intermunicipal disputes.

What land is affected?

The IDPs study areas include a two mile (3.2 km) area around each of the partnering municipalities.

Visit engage.countygyp.ab.ca to see a map of the municipal boundaries and IDP study areas.

How will the IDPs affect area landowners?

IDPs are long-term land use and servicing plans that address how the participating municipalities and the County are to address the future growth needs of these communities.

The IDPs also include a framework for annexation should it be necessary in the future. As these plans address long-term future land-use and development opportunities for these areas, it is important that landowners be involved in the process and provide input on the future use of these lands.

Existing land uses and development rights are not affected by the IDP.

Are there any existing IDPs involving the County of Grande Prairie?

The County of Grande Prairie and the City of Grande Prairie have had an IDP since 1982 that is updated as needed.

What is the process and how do I get involved?

Public consultation is critical to the success of the project and in ensuring the IDPs are prepared to reflect the individual needs of the partner municipalities and the interests of landowners. Based on this understanding, the municipalities have placed an emphasis on community engagement throughout the project.

Over the next few months, we will be asking each municipal council and administration, residents, business owners, and community stakeholder groups to share how each municipality should grow. There will be many opportunities for you to provide feedback through various public engagements including landowner interviews, workshops, open houses and surveys.

Each of the IDPs will be prepared independently and will include policies that are unique to the needs and opportunities of each urban area and their partnership with the County.

To keep up-to-date on the project timeline, outcomes of community engagement, important dates and more visit engage.countygyp.ab.ca. Contact Yasmin Sharp, Planner at ysharp@countygyp.ab.ca or 780-513-3950 for more information.

WE ARE HERE



Public Works Week

Public Works Week is taking place from May 20 to 26! Public Works Week recognizes the importance of public works in community life and acknowledges the efforts of public works employees. The County is hosting community events including a community BBQ and an intersection design contest challenging students at the Bezanson School to beautify their community.

Stay tuned to www.countygyp.ab.ca and County of Grande Prairie social media channels for further information.

Clubroot has been found in the Peace!



8th Annual County Open Houses

Bring the whole family out for free BBQ* and Bouncy Castle!

TEEPEE CREEK HALL

Monday, June 18
5 p.m. – 8 p.m.

HOMESTEAD HALL

Wednesday, June 20
5 p.m. – 8 p.m.

CLARKSON HALL, EVERGREEN PARK

Thursday, June 21
5 p.m. – 8 p.m.

Meet and talk to your Area Councillor or staff members from any department!

**For more details, visit
www.countygp.ab.ca/openhouse
or call 780-532-9722.**

**Available while quantities last*

Clubroot, a potentially devastating soil-borne disease, has been confirmed in Big Lakes County and the MD of Greenview.

The disease primarily affects canola, but can also affect other members of the mustard family grown in garden situations (broccoli, cabbage, cauliflower, radishes, etc). The disease is most easily recognized by the galls that form on the roots, which eventually lead to the death of the plant.

The Agriculture department has conducted extensive sampling throughout the County, and can confirm that the disease has not been found here.

You, the farmer, are the key to preventing clubroot from establishing.

PRACTICE FIELD HYGIENE:

- Knock off large clods of dirt from your equipment before leaving each field
- Ensure equipment that enters your farm is clean and clubroot free
- Sterilize any equipment that is in question using a two per cent bleach solution or steam cleaning
- Practice good crop rotation. For canola, the recommendation is to rotate every three to four years
- Seed clubroot resistant varieties of canola
- Control weeds from the mustard family (e.g. Stinkweed)

These practices are critical to helping prevent clubroot on your farm and throughout the County of Grande Prairie.

Oilfield companies that perform work in the County of Grande Prairie are also required to adhere to the clubroot management protocol, ensuring all industrial equipment is sanitized before their work. This is clearly presented to them before they are permitted to work in our municipality.

For more information about clubroot, visit www.countygp.ab.ca/clubroot.

Nominate a Deserving Family for 100 Years of Farming Award!

The County of Grande Prairie recognizes the significant contributions that our agricultural settlers made in building our County into what it is today.

The 100 Years of Farming Award recognizes these contributions and celebrates the descendants of these pioneers. The award has two categories: The Heritage Homestead Award, available to families who still own or reside on their original homestead from a century ago; and the Pioneer Farming Family Award, which recognizes families who have lived and farmed in the County for over 100 years.

Seen above is the Pandachuk Family receiving their Heritage Homestead gate sign from Councillor Peter Harris. The gate sign awarded to each family is designed by local artist Dominic Valine, and produced locally in Sexsmith by PG Tech Manufacturing.

Nominate a deserving family, apply for an 100 Years of Farming Award and get more details at www.countygp.ab.ca/farmfamily or by calling the Agriculture department at 780-532-9727.



No Spray Program Application Deadline April 15th

If you are a resident of the County who does not want herbicide applied to County ditches around your land, consider a No Spray Agreement.

A No Spray Agreement allows individual property owners to control all brush and regulated weeds on County of Grande Prairie ditches.

If noxious or prohibited noxious weeds, or excessive brush regrowth are found on the land that is specified in the No Spray Agreement, the property owner is notified and given five days to take care of the issue. Failure to do so will result in removal from the program and the County will resume maintenance of the land.

Applications for the No Spray Program are available at www.countygp.ab.ca/nospray or in person at the County Community Services Building. Applications are due by April 15th! Applications received after the deadline will be charged a \$25 administration fee.

For more information on the No Spray Program and for a list of noxious and prohibited noxious weeds please visit www.countygp.ab.ca/nospray or call the Agriculture department at 780-532-9727.

SLOW DOWN AND KEEP OUR FARMERS AND YOURSELF SAFE!

As seeding time approaches, drivers are reminded to slow down and exercise caution when passing farm equipment on our roads.

Tips for keeping everyone safe include:

- Be alert and reduce your speed as soon as you see a slow-moving farm vehicle
- Until it is safe to pass, stay a minimum of 15 metres behind
- Keep in mind that drivers of farm vehicles have extremely limited visibility behind and beside them
- Do not attempt to pass until the road is clear and you are sure it is safe
- When passing, make sure you can see the vehicle in your rearview mirror before you proceed back into the right lane



If you have a question about the rules and regulations for farm equipment on County roads, contact Sonja Raven, Agricultural Fieldman at 780-532-9727.

Calling All Weed Warriors!

The County is now accepting applications for the 2018 Weed Warrior Program.

Are you a non-profit looking to earn some extra cash?

Would you like to join our fight on noxious weeds?

Then we have a deal for you!

Sign up and your group could earn \$500 picking noxious weeds, and help reduce the spread of noxious weeds.

A brief introduction to "Weeds 101" is followed by a few hours picking scentless chamomile. County crews bring your bags of weeds to the Clairmont Centre for Recycling and Waste Management, where they are weighed then incinerated.

The team that picks the most weeds wins an extra \$100! There is also a prize for Team Spirit.

Take a look at the winning Weed Warrior team from 2017, the Peace Wapiti Academy Senior Boys Volleyball Team. The team picked 3,320 kg of Scentless Chamomile!

Applications for 2018 can be found at www.countygp.ab.ca/weedwarrior.

For more information about the program, call Jill Henry with Agriculture at 780-532-9727.



Slettes Named Farm Family of the Year



Reeve Leanne Beaupre, Grande Prairie-Mackenzie MP Chris Warkentin, Grande Prairie-Wapiti MLA Wayne Drysdale and City of Grande Prairie Deputy Mayor Chris Thiessen pose for a fun photo with the Slette family at the 2018 Farm Family Banquet.

This spring the County of Grande Prairie named Eugene and Ruth Slette of the La Glace Hereford Farm, the Farm Family of the Year. The award honours the farm family for their significant contributions to the agricultural community within the County of Grande Prairie, the region and the province.

"It is a true honour to have a family with such deep roots, love for farming and dedication to improving quality of life for their community as the County's 2018 Farm Family," said Leanne Beaupre, County Reeve. "It's a privilege to recognize and showcase the family farming tradition and the important role it plays in our area."

The Slettes have been actively farming in the La Glace area since 1914, primarily raising Hereford cattle and grain. Eugene and Ruth, along with their son Clint and his wife Jennifer are a family that has been farming and volunteering in their community for many years.

"There are so many outstanding farmers in the County of Grande Prairie, so to have received the Farm Family Award is such a great honour," said Eugene Slette. "It gives my family the greatest pride and joy when our hard work is being recognized at this magnitude."

Eugene and Ruth took over the operations of their family homestead from his parents, George and Jenny, in 2004.

Eugene and his eldest son Clint continue to farm a total of 18 quarter sections to this day.

When asked what the reasons are that keep the family farming for all these years, Eugene Slette responded, "Farming is rewarding in so many ways: the sheer joy of witnessing cattle being born, and raising and selling them, watching a crop grow, and knowing all your efforts are benefitting so many people inside and outside of the community. You also meet so many great people with shared values and work ethic to build the community with."

The list of Slette's involvement around the Peace Region is long. Eugene served for many years as a member of the La Glace Fair Board and director for the Dawson Creek Cattle Association, Peace Country Classic, Dawson Creek Bull Sales and Peace River Hereford Association. Ruth previously served as a secretary for the La Glace Agricultural Society, president for the Sexsmith Band Parents Committee and president and director for the La Glace School Council. They also helped build the La Glace curling rink and playground and volunteered for 4-H in parent and leadership roles.

Eugene and Ruth are business-share owners. Clint is an active member of the community, who served as an ambassador for 4-H at the Fairview College, and Peace River Hereford Association Youth Program, and remains a member of the Grande Prairie & District Agricultural Society. The Slettes are also known for lending a helping hand to their neighbours whenever needed and plowing the snow over the winter for neighbours that are widows and single parents. The family's quality time consists largely of working with the cattle and watching Nascar racing.

The Farm Family Award is a tradition in the County that dates back to 1969, designed to recognize the great accomplishments of farming families in the County of Grande Prairie.

More information about the Farm Family Awards Program is available at www.countygp.ab.ca/farmfamily.

Community Tribute Program

The County is proud to launch the Community Tribute Program, an initiative that makes it possible to dedicate a bench or tree to a loved one. The tribute item may be placed on any County owned parkland in coordination with the Parks & Recreation department.

For more information about the program, including the application process, visit www.countygp.ab.ca/tribute.

Vegetation Control

As in years past, the County will begin herbicide application to the County of Grande Prairie's rights-of-way beginning in late May through October.

The Agriculture department spot sprays noxious and prohibited noxious weeds, as required under the Weed Control Act. County crews do not spray in the direct vicinity of a house unless requested. All ditches and property of the County may receive herbicide control, unless covered by a valid No Spray Agreement.

All herbicide application is in accordance with the Environmental Protection and Enhancement Act.

For more information, contact the County Agriculture department at 780-532-9727 or visit www.countygp.ab.ca/weedcontrol.

Changes Coming in 2018 for Those Who Receive Curbside Waste Collection Services

All residents who receive curbside waste collection services will be receiving a free bin to place their garbage in and in front of their home in time for pickup.

Stay tuned to www.countygp.ab.ca and your upcoming utility bill for more information including waste disposal instructions.



The Clairmont Centre for Recycling & Waste Management: Finding Your Way Around

Are you looking to make a trip to the Clairmont Centre for Recycling & Waste Management to drop off items you no longer need? Refer to this map or seek a landfill attendant to help find your way around the facility.



County's Annual Roadside Cleanup

Various community groups will be collecting litter from the County's roadsides and ditches as part of the annual roadside cleanup program, which runs from May 5-21, 2018.

Drivers are advised to watch for cleanup crews, slow down and practice caution. Signs will be posted in the areas of the cleanup and cleanup crews will be wearing high visibility safety vests.

The roadside cleanup is an annual program ran by the County in the spring, which gives local, non-profit organizations the opportunity to raise funds for their programs by cleaning up the roadsides, ditches and hamlets within the County.

Application forms are available in February and March of each year. For more information visit www.countygp.ab.ca/roadsidecleanup.



countygp.ab.ca

Cardboard Campaign

Say “hello” to the “Cardboard Crusaders” at the Clairmont Centre for Recycling and Waste Management this summer. This valuable resource is found all too often in the landfill so our “Cardboard Crusaders” will be on site to help residents guide their cardboard to the recycling bin; not to the landfill.



Backyard Organics Diversion Program

Are you interested in reducing waste and giving back to the environment? Purchase your very own Earth Machine Composting Unit or Green Cone Food Digester in honour of Earth Day! On Earth Day, Sunday, April 22, a limited quantity of the Composters and Digesters will be on sale at www.countygp.ab.ca/homecomposting. There are 30 units of each available for 50 per cent off, until quantities last.

EARTH MACHINE COMPOSTER – REG. \$60

- Accepts grass clippings, leaves and debris, fruits and vegetables
- Easy-to-use and assemble
- Converts organic material to nutrient-rich soil
- Easy to remove composted material
- 10-year warranty
- Rodent resistant



GREEN CONE FOOD DIGESTER – REG. \$120

- Accepts kitchen scraps including meat, bones, dairy, cooked and processed foods, grains and pet waste
- Simple and easy-to-use
- No need to stir
- No by-product
- Converts material to liquid and enters surrounding yard providing nutrients to the soil



Visit www.countygp.ab.ca/homecomposting to order a unit. For more information, contact the Clairmont Centre for Recycling and Waste Management at 780-567-4194.

It's time!
The recycling
roundup is on!



albertarecycling.ca | 1.888.999.8762

Your unwanted computers, TVs and old paint aren't doing any good hanging around, but they will if you recycle them. **Bring your old computers, TVs, paint and hazardout waste to the:**

DEMMITT TRANSFER STATION
Saturday May 26, 10 am – 2 pm

Located on NW 13-74-13-W6M
From Demmitt head 1.5kms southeast to Range Road
131 and 3.2 km south

**ENTER TO WIN SOME GREAT PRIZES INCLUDING
A BBQ AND TWO HOME COMPOSTING UNITS!**

Alberta
recycling
MANAGEMENT AUTHORITY



What Can I Recycle?

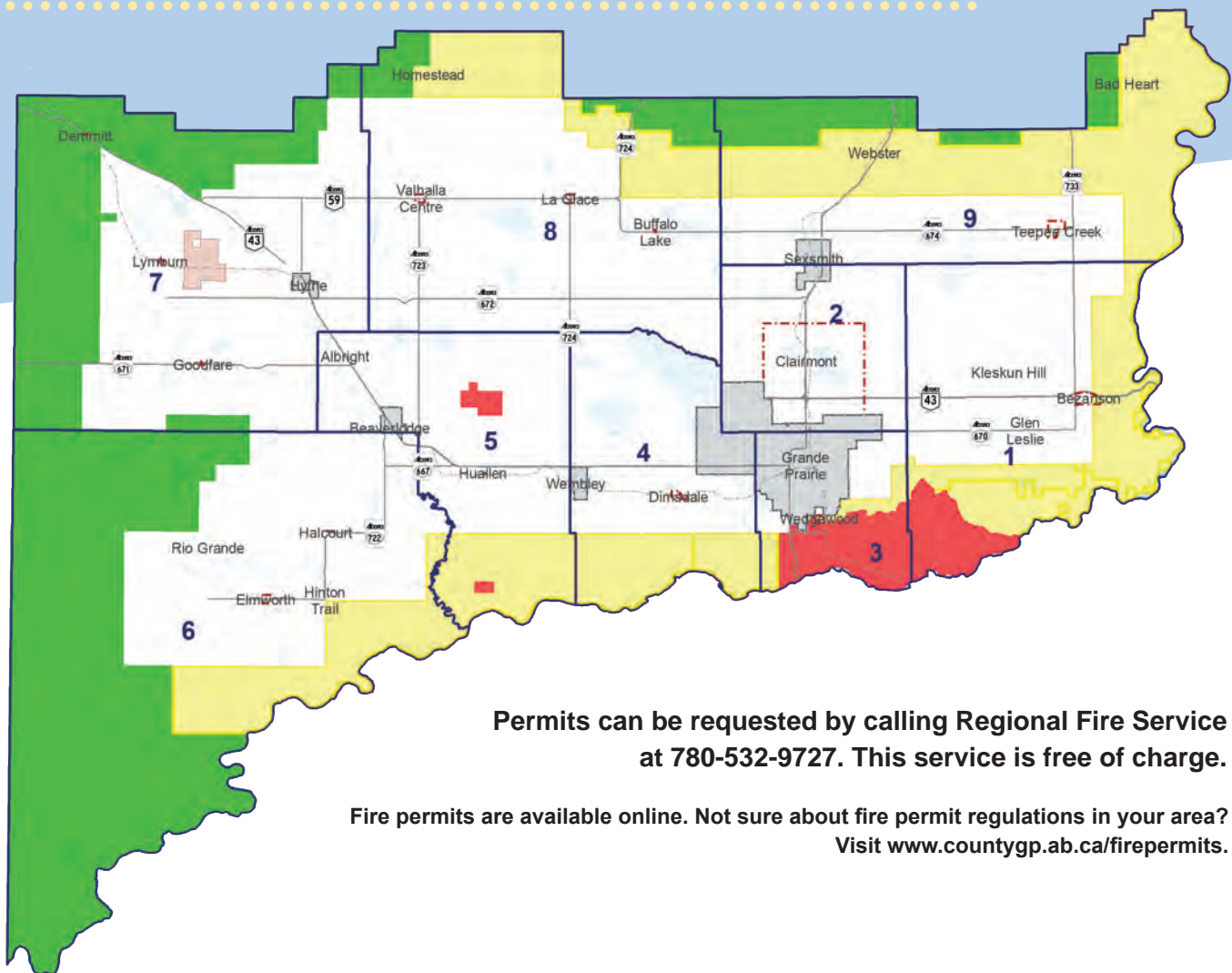
The County's various recycle and waste management facilities accept a number of items for recycle. Be sure to keep the following materials separate from your regular trash and bring them with you on your next trip to our facilities.

	CLAIRMONT CENTRE FOR RECYCLING & WASTE MANAGEMENT	WEST GRANDE PRAIRIE REGIONAL LANDFILL	DEMMITT TRANSFER STATION	TEEPEE CREEK TRANSFER STATION	ELMSWORTH TRANSFER STATION
Electronics & Appliances	✓	✓	✓	✓	✓
Propane Tanks (Under 100lb)	✓	✓	✓	✓	✓
Refundable Bottles	✓	✓	✓	✓	✓
Cardboard & Boxboard	✓	✓			
Vehicle Batteries	✓	✓	✓	✓	✓
Fluorescent Bulbs	✓	✓			
Pesticide Jugs	✓	✓		✓	✓
Tires	✓	✓	✓	✓	✓
Wood	✓	✓	✓	✓	✓
Metal	✓	✓	✓	✓	✓
Clothing	✓				
Agricultural Plastics	✓	✓			
Rechargeable Batteries	✓	✓	✓	✓	✓
Paper, cardboard, tin, & glass	✓	✓			
Drop n Swap program	✓			✓	
Concrete	✓	✓			
Used Oil	✓	✓			
Household Hazardous Waste & Paint	✓	✓			

Additionally, there are 13 recycling bins located throughout the County for the public to properly dispose of paper, cardboard, tin and glass.

For more information including the locations and hours of the recycle and waste management facilities, visit www.countygop.ab.ca/recycleprograms.

It's Fire Season - Do You Have Your Permit?



Permits can be requested by calling Regional Fire Service at 780-532-9727. This service is free of charge.

Fire permits are available online. Not sure about fire permit regulations in your area? Visit www.countygp.ab.ca/firepermits.

The County has four different Fire Burning Areas that are displayed in white, yellow, green and red.

County White Area – Requires a verbal permit during fire season fill out a request form.

County Yellow Area – Requires a written fire permit during fire season contact your fire guardian.

County Red Area – This is a restricted burn zone. Permits are required year round. Call 780-532-9727 for information on how to obtain your permit.

County Green Area – Requires a written fire permit during fire season from a forestry fire guardian as this area is designated as the Forest Protection area. Contact assigned forest fire guardian.

Residents are reminded that there is no burning of household garbage permitted within hamlet or listed residential subdivisions (an area of land divided up into building lots containing more than five adjoining residences). An inspection and permit is required and must be done within an approved incinerator or burn barrel.

Fire Marshal Ken Atamanchuk stresses that burning is never permitted in the Dunes Natural Area, “This entire region is considered to be at extremely high risk for wildfires due to heavy forestation. The amount of vegetation also poses a hazard because it makes it very hard for fire and emergency crews to access the area during emergency situations. This is why having open fires, including campfires, is strictly prohibited in the Dunes.”

In the event a Fire Ban is issued in the County, burn permits are no longer in place until the ban is lifted. Notifications of fire bans are made through local media.

To request an inspection or permit, to clarify your Burn Area, or to get more information about fire safety requirements, call Regional Fire Service at 780-532-9727 or go to www.countygp.ab.ca/firepermits.

DIVISION	FIRE GUARDIANS	PHONE
Division 1 Bezanson	Brandon Bulford Mike Starosta Ross Hennigar Jordan Storey	587-298-9499 780-897-8468 780-933-1610 587-343-4172
Division 2 Clairmont Red Zone	County Regional Fire Service	780-532-9727
Division 3 Dunes Yellow Zone & Subdivisions Red Zone	Matt Bauer Tracay Depew Russell Lochhead County Regional Fire Service	780-814-3766 587-297-1524 780-402-1757 780-532-9727
Division 4 East of Wembley	John Frankie Matthew Smith	780-518-7912 780-814-2453
Division 5 West of Wembley	Alfred Golnick Jamie Querin Tyrell Johnson Lynda Ost	780-933-9221 780-766-2735 780-512-8244 780-882-5278 780-296-2825 780-766-2735
Division 6 Beaverlodge	Kevin Bonsan Wayne Bekkerus Ron Kubbernus	780-512-3584 780-402-1533 780-354-2182 780-354-8974 780-300-5883
Division 7 Hythe	Dallas Pierson John Moutray	780-882-7576 780-978-1030
Division 8 LaGlace	Dan Mateev Kelly Isaac Toni McDougald	780-766-3910 780-402-1992 780-882-9914
Division 9 Sexsmith Teepee Creek	Fred Hurlock (Bad Heart Area Only) Jim Le Geyt Doug Spry Ian Hamilton	780-568-2906 780-568-2186 780-832-8103 780-568-3415 780-518-6840
Forestry (Alberta Agriculture and Forestry)	Peter Paterschuk Moira Boomgaardon (North of Sexsmith & Spirit River)	780-524-1648 780-814-1983

NOTICE APPLICATION FOR DUST CONTROL

Rates for 2018 calcium applications:

Residential - \$4.40/metre Commercial/Industrial - \$6.60/metre

The County of Grande Prairie Public Works department is accepting applications for Dust Control on a cost share basis for residents located adjacent to gravel roadways within the County.

The application deadline is Monday, April 30, 2018. Applications now available to complete online at countygp.ab.ca/dustcontrol

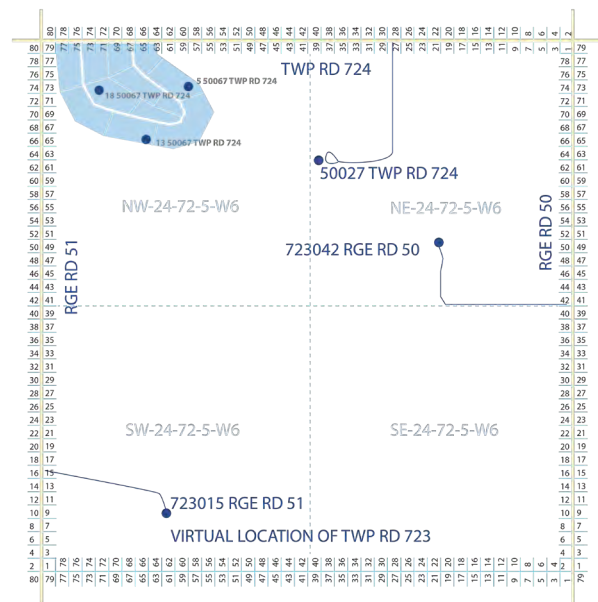
Application forms can also be completed at the Public Works Building located at 10001 - 84 Avenue, Clairmont

For more information, contact Public Works at 780-532-7393 or visit www.countygp.ab.ca/dustcontrol.



Rural Addressing

Within the County, there is a rural 911 address system that allows emergency services to find your property easily. Your address is based on the location of your property's driveway, and the closest road right of way either south or east of your approach.



RURAL ADDRESSING GUIDELINES

- Every mile is divided into 40 metre intervals, with the address increasing every 40 metres
- Those sections increase from south to north and from east to west
- Even numbers are along north and west sides
- Odd numbers are along south and east sides

- Range Roads run north to south like streets do in civic areas
- Township roads run east to west like Avenues do in civic areas
- If the primary access is off a range road (or street in civic areas), then you refer to the road to the south
- If the primary access is off a township road (or avenues in civic areas), then you refer to the road to the east
- There are virtual township roads between all sections, whether an actual road allowance exists or not

EXAMPLE ADDRESS

723015 RGE RD 51

- 723 – Refers to the township road, virtual or existing
- 015 – Refers to interval 15 of the 40 metre grid
- RGE RD 51 – the property's driveway is located along Range Road 51

50027 TWP RD 724

- 50 – Refers to the range road
- 027 – Refers to interval 27 of the 40 metre grid
- TWP RD 724 – the property's driveway is located along Township Road 724

SUBDIVISIONS

- Subdivisions are numbered clockwise from the access road entry, by an increment of four
- Odd numbers are on the south and east sides of the road, even on the north and west sides if possible

Motorists Reminded to Secure Loads

It is important to secure your load properly for safety and environmental reasons. It ensures other drivers are not impacted by flying debris and keeps windblown litter off our land, open space and out of our water.

FCSS has Moved!

Family and Community Support Services (FCSS) has moved to Clairmont!

Come visit us at our new location at #401 9915 – 102 Avenue across from the Fas Gas.

Our new location will house employees from our Home Support Program, Community School Liaison Program, Early Childhood Development Program and Administration.

For more information on the FCSS and the services they provide please visit www.countygyp.ab.ca/fcss or call 780-532-9727.

Recreation Programming



Have you always wanted to learn how to garden, but don't know where to start? Perhaps you're looking for a tune-up on your technique? If so, the Gardening Fundamentals workshop series is for you! Visit www.countygp.ab.ca/recreationprograms for more details on this and other future programs

What kind of Recreation programming would you like to see throughout the County of Grande Prairie?

Have your say at www.countygp.ab.ca/recsurvey.

Columbarium

Purchasing a niche at the grain elevator themed Emerson Trail columbarium is a wonderful way to honour loved ones from our community. The County's Cemetery Specialist, Gail Temple, will work with individuals or families to discuss your options. You can contact Gail with questions or to set up an appointment at **780-532-9727**.

Visit www.countygp.ab.ca/cemeteries for more information about cemeteries in the County of Grande Prairie.

Recreation and Culture Grant Software

The County has made the application process for recreation and culture grants easier!

For the first time, non-profit groups seeking grant funds from any of the following grant programs are now required to submit their application online:

- Capital Assistance
- Major Capital Assistance
- Operating Assistance
- Cemetery Improvement
- Community Assistance and Event Sponsorship

Groups can also check the status of submitted applications online and will be notified automatically on the progress of their application. Parks and Recreation staff are happy to assist groups or individuals with this transition.

The Capital Assistance and Major Capital Grant Programs will open early August.

For more information and to apply, visit www.countygp.ab.ca/grants.

June is Recreation and Parks Month



Alberta
Recreation & Parks
Association

Each year Alberta Recreation and Parks Association invites communities to celebrate our province's spacious, beautiful outdoor parks, active programs and events, inspiring people to live healthy and active lifestyles.

This June, join our Parks and Recreation team for pop-up events held at our beautiful campgrounds, featuring our friendly park hosts. Bring your picnic and explore what each unique campground and day use area has to offer.

The County will also be celebrating National Health and Fitness Day on Saturday, June 2.

Follow the County of Grande Prairie's social media channels to learn how to get involved with these great initiatives!

HOMMY PARK & CAMPGROUND

June 2 | 12 p.m. – 3 p.m.

KLESKUN HILL PARK & CAMPGROUND

June 9 | 12 p.m. – 3 p.m.

BEAR LAKE PARK & CAMPGROUND

June 16 | 12 p.m. – 3 p.m.

PIPESTONE CREEK PARK & CAMPGROUND

June 23 | 12 p.m. – 3 p.m.

Visit www.countygp.ab.ca/parksandrec for more information.



countygp.ab.ca

Wapiti Recreation Area Update



The County of Grande Prairie would like to thank everyone who provided their feedback during the Fall 2017 public consultation process on plans for the Wapiti outdoor recreation area just south of Grande Prairie, north of the Wapiti River and east of Highway 40.

Phased over 10 years, the Wapiti Recreation Area Management Plan will remediate 130 hectares of depleted gravel leases and transform the site, creating a low-impact multi-generational outdoor recreation area with new habitats and ecosystems.

The proposed plan for Phase One includes trails for snowshoeing, walking and cycling, as well as a picnic and

day-use area. Other possibilities include connectivity to a trail system from Clairmont to Nitehawk Year-Round Adventure Park, tobogganing, an off-leash dog park, an outdoor classroom and an Indigenous component. The proposed recreation area is located within a Key Wildlife and Biodiversity Zone (KWBZ). Approved activities must minimize disturbances to land and wildlife. As such, only non-motorized activities will be permitted within the recreation area.

Using the feedback provided, our Parks and Recreation department is working on an implementation plan, while awaiting final approval for the lease from the Province.

Consultation with special interest groups in the upcoming months will help ensure that the project meets the objective of creating low impact recreational opportunities while encouraging better environmental stewardship of the area.

Stay updated by visiting
www.countygp.ab.ca/wapitirecplan.

Camping Season is Coming Soon!

Campgrounds and day-use areas in the County of Grande Prairie open for the season on May 15th!

Like last year, Pipestone Creek Campground is accepting online reservations. Campers let us know that they love the convenience and ease of booking their favourite sites.

Visit **www.countygp.ab.ca/campgrounds** to browse all of the park spaces available throughout the County including day-use, individual and group campgrounds and parks.

NEW AT PIPESTONE CREEK CAMPGROUND

In an ongoing effort to improve our camper's experience, Pipestone Creek Campground will undergo upgrades in the Fall 2018 / Spring 2019 season to provide power to more campsites. Individual site markers are also being upgraded throughout the campground.

Find more details about the project at **www.countygp.ab.ca/pipestone**.



Meet Our New Park Hosts



PIPESTONE CREEK PARK HOST: WENDY SMITH

Wendy Smith was born and raised in the Peace Region as a fourth generation farmer and beekeeper with the family operation of Sterling and Karen Smith.

Wendy's beekeeping and seed production background led to a 15-year position at the Beaverlodge Research Farm as an agriculture research technician with Agriculture and Agri-Food Canada. This was followed by a position at the National Bee Diagnostic Centre where she participated in an apiculture research project, focusing on honeybee health across Canada.

As a local heritage-farm producer, Wendy has been involved with specialty seeds, bees, cattle, horses and the greenhouse where she worked alongside four generations of family. Her three children, and grandchildren, enjoy camping, fishing,

horseback riding and exploring the outdoors of northern Alberta. They have all been visitors to the Pipestone Creek Park since they were small.

As a nature lover, outdoor enthusiast and artist, Wendy looks forward to connecting with visitors to the park and guests at the campground. After the previous caretaker's 10-year tenure Wendy knows she has big shoes to fill but is excited about the opportunity of meeting new and returning faces, plus being able to share some of the beautiful natural history of the area. Wendy will continue to nurture Pipestone Creek Campground as a family friendly camping destination, and is happy to help orient any newcomers to the online reservation system.

Email pipestone@countygp.ab.ca or call the Park office at 780-766-2391 if you have any questions for Wendy about visiting Pipestone Creek Campground this summer.

Visit www.countygp.ab.ca/campgrounds to view all of the beautiful campground facilities available throughout the County.



BEAR LAKE PARK HOSTS: DARCY AND CHERIE-ANN MILROY

Cherie-Ann Milroy, her husband Darcy and their three sons, are long-time residents of the County.

They are a personable and outgoing family who love the outdoors, meeting new people and appreciating old friends. They want to ensure that every guest enjoys their stay at the campground and feels the pride and welcoming spirit of the County of Grande Prairie.

As Park Hosts of Bear Lake Campground, they are focused on taking the family-oriented campground to the next level by creating a family-cared for facility that is a gem of the County. Future plans include beautiful flower beds, painting and an all-over refresh of the facilities and grounds.

With Bear Lake Campground's prime central location in the County, tucked-away feel and lake access, there is great potential to make the campground and day use area a favourite getaway for local families and groups. Are you part of a group that would like to use the Bear Lake Campground and Park for programming or events? Cherie-Ann would love to help you out!

Email bearlake@countygp.ab.ca or call the Park office at 780-567-4105 with questions for Cherie-Ann about visiting Bear Lake Campground this summer.

Visit www.countygp.ab.ca/campgrounds to view all of the beautiful campground facilities available throughout the County.



Come Play!

The Crosslink County Sportsplex has a program for everyone!

780-830-7407 | info@cgpsportsplex.com | www.crosslinkcountysportsplex.com

UPCOMING EVENTS

U4, U6, U8 & U11 Indoor Soccer Fun Leagues

Register your children for these fun-filled Saturday leagues that will be split into smaller age groups to accommodate all skill levels if there are enough registrants from each age group (3 & 4 year olds, 5 & 6 year olds, 7 & 8 year olds, 9-11 year olds). Registration includes a t-shirt and a season-ending medal. Parents who coach or assistant coach will receive a \$30 refund at the end of the session. This session runs from Saturday, April 14 to Saturday, June 23, 2018.

Fight For Hope

Fight For Hope is a dual fundraiser that supports the Ronald McDonald House Charities Northern Alberta and The Kids With Cancer Society. On April 28, come and cheer on your favourite athletes in the Overland Transport Rink during the 2nd Annual Fight For Hope as they compete in amateur boxing matches to raise money for both the Ronald McDonald House and Kids With Cancer. All proceeds are donated equally to both of these important charities.

Victoria Day & Canada Day

On May 22 and July 1, the Sportsplex will have many drop-in programs scheduled to entertain your family! Visit our website to view the Facility Calendars. On Canada Day, be sure to check out the 1000 Villages International Food Festival at the Sportsplex!

Adult Zulu Challenge

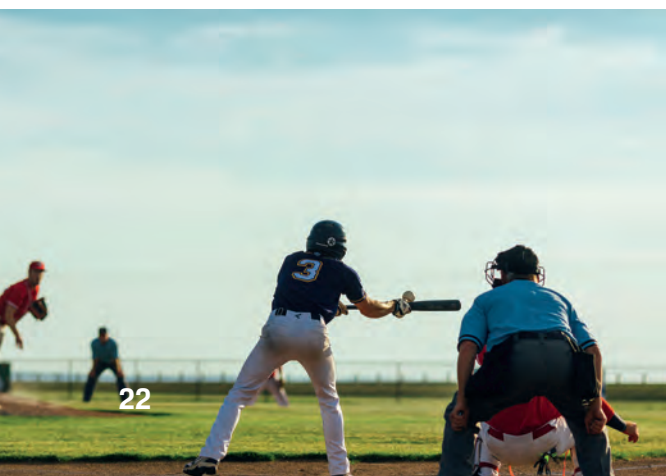
On Saturday, May 26, come and test your endurance! 5 km and 10 km options on the same day with 21 obstacles. New terrain and a COMPLETELY NEW RACE SEQUENCE! Dare to try?!

1000 Villages International Food Festival

From Friday, June 29 to Monday, July 2, 10 a.m. to 8 p.m., there will be up to 30 countries offering their delicious and nourishing fare at the Sportsplex. There will be pop-up shops, music, sporting demos, plus more! Find them on Facebook for more information.

Zulu K9 Challenge

Zulu K9 Challenge is an obstacle course challenge for you and your dog on Saturday, July 7! There is either a 5 km or 10 km option with up to 18 obstacles...you will climb, crawl, carry, pull and push your way to the finish line! All dog breeds and ages welcome. It's a great adventure for active dog owners and a great way to bond and build trust. There is no other similar dog event in the country!





2018 Alberta Summer Games

Visit the Sportsplex from July 29 to 22 to cheer on your favorite provincial lacrosse players! The Alberta Summer Games provide many benefits to both the host community and to thousands of Albertans who participate at local, zone, and provincial levels. Alberta Summer Games provide an opportunity to celebrate young athletes and provide them with a venue to compete and reach their athletic potential.

Heritage Day & Labour Day

On Monday, August 6 and Monday, September 3, the Sportsplex will have many drop-in programs scheduled to entertain your family!

Book Your Next Party or Event at the Sportsplex!

The Sportsplex is the place to be for your next party or event! Book the ice rink, fieldhouse, dry floor, meeting room, KnockerBalls or a bouncy castle! Leave the catering to us – choose from a wide variety of food and drinks from either the Over-Time Family Sports Lounge or Tito's Concession.

Contact the Sportsplex for more information about party costs and packages, to view menus, and to secure your booking.

For more information about the Sportsplex and the programs and events available, visit crosslinkcountysportsplex.com, or contact **780-830-7407** or info@cgpsportsplex.com.

GET FIT WHILE HAVING FUN!

Come and try out FitMom Boot Camps on Monday and Wednesday mornings or try Aerial Yoga classes. Sign up or drop in today for one of these exciting programs offered at the Sportsplex:

- FitMom Boot Camps
- Stick and Puck
- Fieldhouse Activities
- Adult Shinny and Stick and Puck
- Lunch Time Stick and Puck
- Tender Tots
- Bouncy Castle Days
- Seniors Walk and Talk
- Ball Hockey
- Yoga
- KnockerBalls
- 13 and Under Shinny
- Lacrosse
- U5, U8 and U11 Soccer League
- Learn to Skate
- Indoor Batting Cage
- Adult Non-Contact Hockey League and Industrial League

Register your team for the next season!

For more information about these programs and drop-in activities, including class descriptions, times and locations, visit crosslinkcountysportsplex.com.



countyp.ab.ca



GET READY TO UNEARTH

Hosted biannually in communities across the province, the Alberta Summer Games are Alberta's premier youth multi-sport event. This year, the County of Grande Prairie and the City of Grande Prairie are honoured to be co-hosts of this extraordinary athletic experience.

From July 19-22, over 2,700 young athletes from ages 11 to 17, will descend upon the City and County of Grande Prairie to compete, connect and make lasting memories at the 2018 Alberta Summer Games. Over the course of four days, these athletes will go for gold in 13 different sports.

A full list of sports and tryout information is available online www.albertagames.com

The Games will kick off with the ATCO torch relay on the evening of Wednesday, July 18th, which will travel through both the County and City. The Games are currently seeking families from both the City and County to participate in the torch relay; please contact the 2018 Alberta Summer Games office at **780-532-8195** or by email lindsey@2018asg.ca to learn more.

Thursday, July 19th, will include spectacular opening ceremonies hosted outside of the Philip J. Currie Dinosaur Museum, be sure to keep your eyes out for ticket announcements - this show is sure to sell out! If you miss your chance at tickets don't worry, you can still stay involved in the games. A partnership with Global TV means that anyone can watch the opening ceremonies, live-streamed to their living room, from anywhere in the province!



YOUR GREATNESS!

Friday, July 20th and Saturday, July 21st, will see games taking place across the City and County of Grande Prairie.

- Crosslink County Sportsplex – Lacrosse
- Evergreen Park – Baseball
- Wembley Field – Football
- Wapiti Nordic Ski Trail – Mountain Biking
- Legion Field – Athletics
- Community Knowledge Campus (CKC) Field - Football
- Eastlink Centre - Swimming and Triathlon
- Rotary Fields - Soccer
- Grande Prairie Regional College - Basketball
- Mother Theresa Catholic School - Basketball
- St. Joseph Catholic High School - Basketball
- South Bear Creek Park – Softball & Beach Volleyball
- Macklin Field - Rugby

Keep an eye on the 2018 Alberta Summer Games website where admissions for the individual competitions will be available in the coming months.

VOLUNTEERS NEEDED

It takes a vast team of dedicated community members to make events like the 2018 Alberta Summer Games possible. In total, the Games will require 2,000 community volunteers working in a wide variety of roles to make the event a success. The 2018 Alberta Summer Games team is encouraging families, businesses and individuals to consider volunteering and becoming part of the incredible legacy of these Games.

These Games are a chance to make a lasting impact in the lives of youth across our region, as well as in our local community. Dollars raised through admissions and fundraising help ensure that when the 2018 Alberta Summer Games leave, a legacy of funds is left in the community ensure that future generations remain engaged and involved in sports.

If you want to learn more about the torch relay, volunteering, or the games in general, please feel free to contact our office at 780-532-8195 or visit our website at www.albertagames.com



**Are you high energy?
Community minded?
Like to have fun?**



JOIN OUR VOLUNTEER TEAM!

APPLY TODAY AT: www.2018ASG.ca/volunteer



countygp.ab.ca



PHILIP J. CURRIE DINOSAUR MUSEUM

Upcoming Exhibits, Programs & Events

Visit www.dinomuseum.ca/events for more information.

Dinosaurs Unearthed

Starting in late March and running through the end of the summer, dinosaurs come alive in this special exhibit. Meet animatronic incarnations of Tyrannosaurus rex, Protoceratops, and more!

Plus, check out the fossils of these enigmatic animals from the past, and learn about how they helped shape the present.

Stay tuned to our official website and social media channels for more details!

Dino Story Time

Visit the museum on the last Friday of each month for a live reading of a dino-themed storybook hand-picked from our Kaleidosaur gift shop and inspire your child's imagination!

Attendance is free, but you can book a seat in advance by contacting visitorservices@dinomuseum.ca or by phoning **587-771-0662**.

Summer Camps

Discover your next adventure with our summer day camps for kids aged four through 16.

Learn about dinosaurs hands-on, take exciting trips through our galleries, create cool crafts, get outside to explore nature for fossils and much, much more!

Get more info or register today at dinomuseum.ca/summercamp.

Free Lecture Series

Learn about dinosaurs, palaeontology, and other fascinating topics from experts in the field at our free lectures, held throughout the year. With topics like the living descendants of dinosaurs, to distinguished speakers like John Acorn the Nature Nut, there are plenty of opportunities to expand your horizons.

Get details on upcoming lectures at dinomuseum.ca/lecture-series.

Pipestone Creek Bonebed Tours

Take a guided tour of one of the densest dinosaur fossil sites in the world and discover the source that inspired a museum! Learn about the amazing discovery that cemented the Peace Region as a vital dinosaur destination through our interpretive tours that run throughout the summer.

Learn more at dinomuseum.ca/bonebed-tours.





Aykroyd Family Theatre A National Geographic Experience

Experience dinosaurs, nature, history, and more on the big screen at the museum's Aykroyd Family Theatre – the only National Geographic-licensed theatre in Canada.

Take a prehistoric journey in *Walking with Dinosaurs*, dive deep into dangerous shark-infested waters in *Great White Shark*, visit a living piece of history in *Jerusalem*, and much more!

Get film info and showtimes at dinomuseum.ca/movies.

Dino Ball

The museum society's annual fundraiser gala takes place on August 25, 2018. Join us for a night of fun, games, good company, and great food, all in support of the Philip J. Currie Dinosaur Museum.

Don't forget to enter our annual raffle, this year for a 2018 Can Am Lonestar Plus utility trailer.

Keep in the loop on our social media, website, and e-newsletter, as you won't want to miss what we have in store for you this summer!

Palaeontologist for a Day

Join our palaeontology team in a hands-on hunt for dinosaur fossils in the Pipestone Creek bonebed in our newest summer program, and discover the undiscovered!

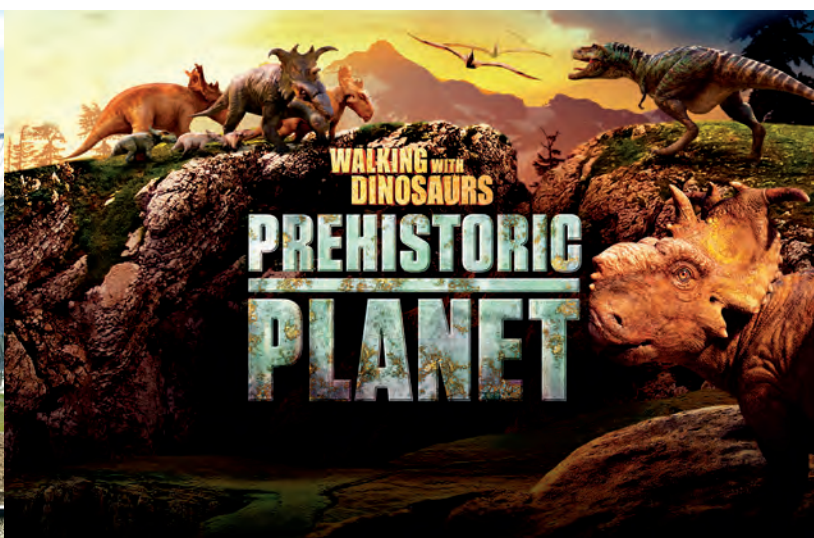
Included in your day expedition are three meals from our restaurant, some cool museum swag, and a behind-the-scenes tour of our facilities. Will you find the next prehistoric breakthrough?

Get all the details, or sign up for the adventure at dinomuseum.ca/programs/palaeontologist-for-a-day.

Volunteer Opportunities

Join our team and help us in our mission to discover, preserve, and share the dinosaurs of northwestern Alberta. The museum has many different ways to get involved – whatever your interest or skill level is, there is an opportunity for you!

Learn more about how you can get involved, or sign up to attend a free volunteer orientation session at dinomuseum.ca/volunteering.





TOP ROW FROM LEFT TO RIGHT: Councillor Harold Bulford, Councillor Bob Marshall, Councillor Peter Harris, Councillor Corey Beck

FRONT ROW FROM LEFT TO RIGHT: Councillor Linda Waddy, Councillor Daryl Beeston, Reeve Leanne Beaupre, Deputy Reeve Ross Sutherland, Councillor Karen Rosvold

COUNCILLOR CONTACT INFORMATION

Councillor Harold Bulford

Division 1
780-876-9009
hbulford@countygp.ab.ca

Councillor Daryl Beeston

Division 2
780-933-3464
dbeeston@countygp.ab.ca

Reeve Leanne Beaupre

Division 3
780-814-3121
lbeaupre@countygp.ab.ca

Deputy Reeve Ross Sutherland

Division 4
780-512-5385
rsutherland@countygp.ab.ca

Councillor Bob Marshall

Division 5
780-933-2053
bmarshall@countygp.ab.ca

Councillor Peter Harris

Division 6
780-933-3074
pharris@countygp.ab.ca

Councillor Linda Waddy

Division 7
780-897-5609
lwaddy@countygp.ab.ca

Councillor Karen Rosvold

Division 8
780-831-0902
krosvold@countygp.ab.ca

Councillor Corey Beck

Division 9
780-831-6394
cbeck@countygp.ab.ca

SENIOR ADMINISTRATION

Bill Rogan

Chief Administrative Officer
780-532-9722
brogan@countygp.ab.ca

Nick Lapp

Planning & Development
Services Director
780-532-9722
nlapp@countygp.ab.ca

Kathleen Turner

Interim Community
Services Director
780-532-9727
kturner@countygp.ab.ca

Dale Van Volkingburgh

Public Works Director
780-532-9722
dvan@countygp.ab.ca

Dawn Sauvé

Corporate Services Director
780-532-9722
dsauve@countygp.ab.ca

Return undeliverable
Canadian addresses to:
The County of Grande Prairie No.1
10001 – 84 Avenue, Clairmont, AB T8X 5B2

COUNTY CONTACT INFORMATION

EMAIL:

info@countygp.ab.ca

ADDRESS:

10001 – 84 Avenue
Clairmont, AB T8X 5B2

WEBSITE:

www.countygp.ab.ca

OFFICE HOURS:

8:30 a.m. to 4:30 p.m.
Closed from 12 p.m. to 1 p.m.
and on statutory holidays

COUNTY ADMINISTRATION BUILDINGS


Administration, Assessment,
Economic Development, Finance
& Systems, Communications, Human
Resources, Public Works, Planning &
Development Services

780-532-9722


COMMUNITY SERVICES BUILDINGS

Agriculture, Family and Community
Support Services, Regional
Enforcement Services, Regional Fire
Service, Parks & Recreation

780-532-9727

 Follow us on Twitter

 Watch us on YouTube

 Like us on Facebook

